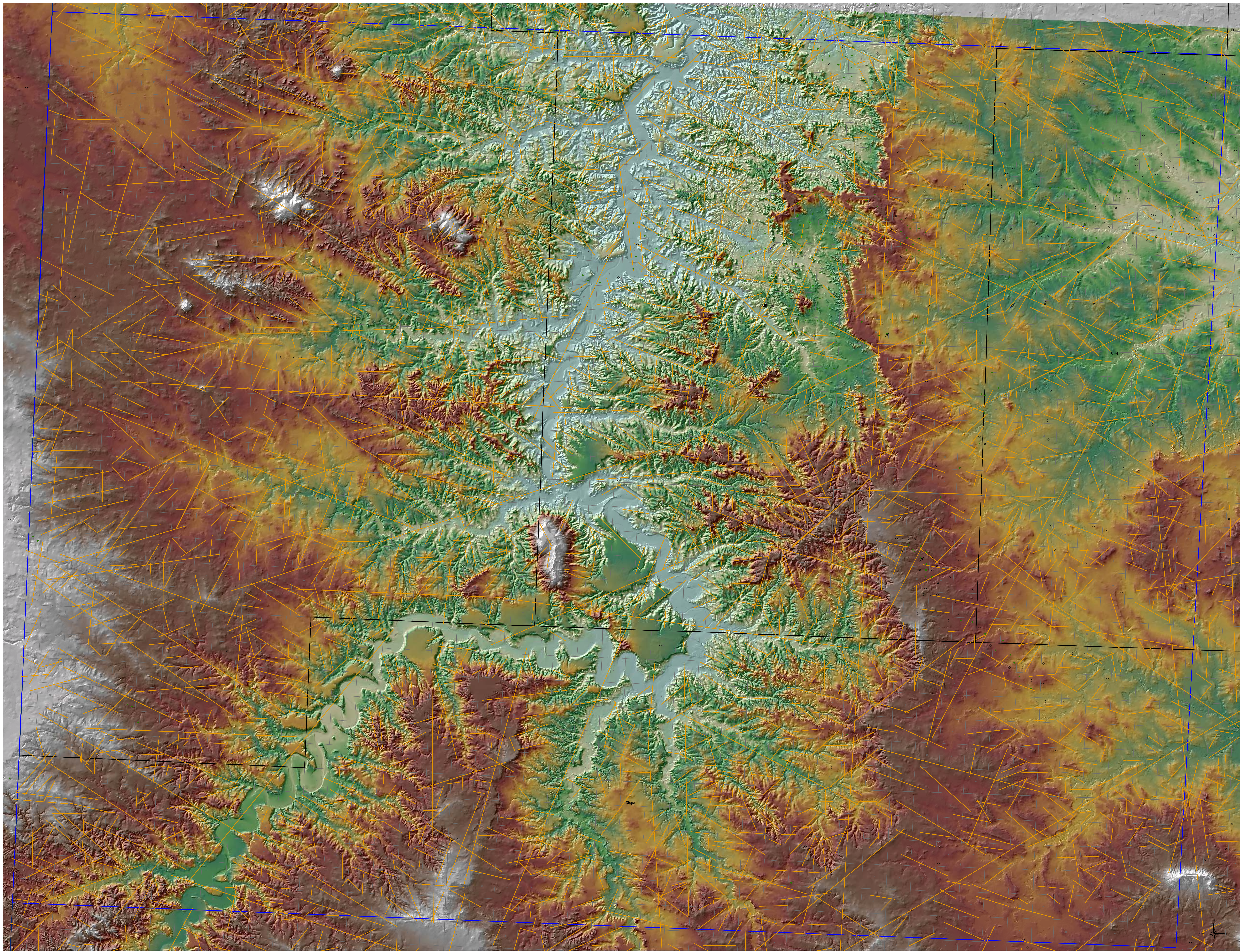


NED with Hillshade and Historical Lineaments



Legend

Wells_GT6000'

- <call other values>
- 0_Dry Hole Temp Abnd
- 1_OIL
- 2_GAS
- 4_Oil-Multi Zone
- 7_Oil & Gas-Multi Zone
- 8_Junked Abnd
- 9_Inj
- T_Well Start

- G129P2ShadedRelief
- Thesis_Area
- STATE_poly
- COUNTIES_poly
- PLSSTOWNSHIPS_poly
- PLSSECTIONS_poly

hill315sh45_2

Value
High : 254
Low : 0

Clipped_DEM

Value
High : 1068.55
Low : 678.072

Coordinate System
NAD 1983 StatePlane
North Dakota - South FIPS 3302

Nicolas B. Guerrero
March 2012

