



JUNIOR
AGGIE
1929



Engraving by
**SOUTHWESTERN
ENGRAVING
COMPANY**
San Francisco, California

Printed by
**GAYLE
PRINTING CO.**
New York

EX LIBRIS



Richard E. Byrd
*Trans-Atlantic Flyer and
Antarctic Explorer*



The
JUNIOR
AGGIE



Col. Charles A. Lindberg

"The Lone Eagle"

*Ace of all trans-oceanic flyers and
America's unofficial good-will ambas-
sador in the interests of world peace.*

Copyright

1929

GEORGE COLEY

Editor

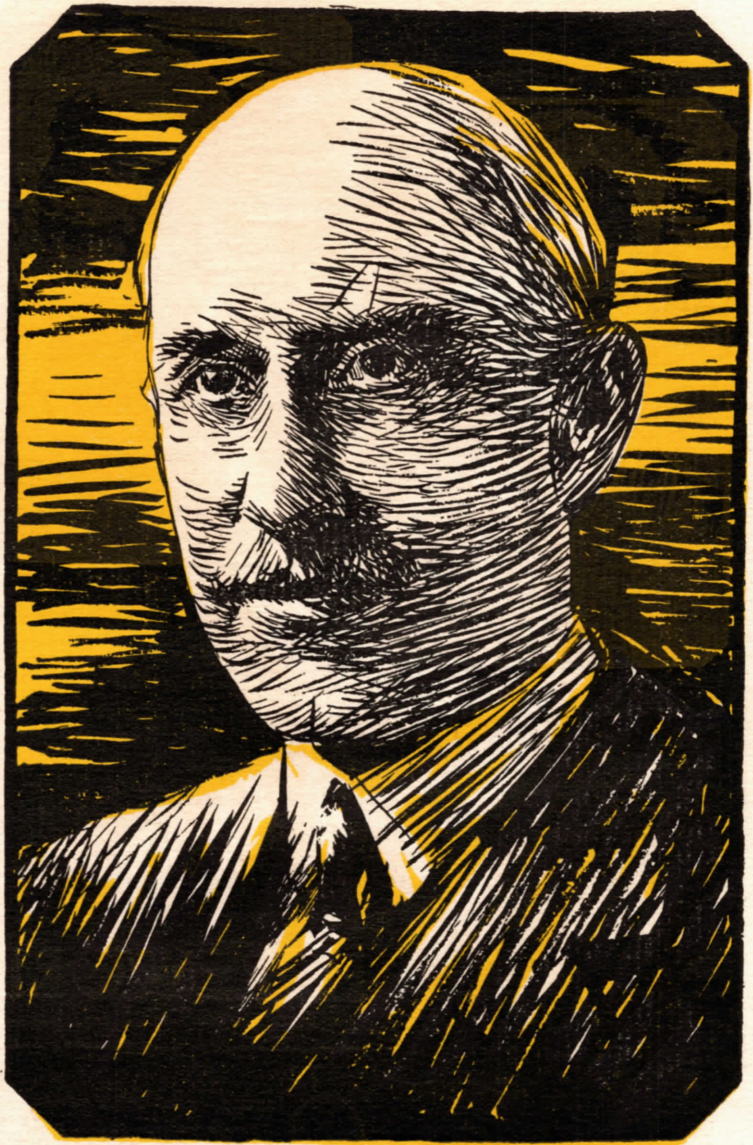
BILL HUDSPETH

Business Manager



Orville Wright

*Designer of the first heavier-
than-air machine.*



The Junior Aggie

1929

Published by the Students of
North Texas Agricultural College
Arlington, Texas



Arthur C. Gobel

*Winner of
Dole Hawaiian race.*



Bill Erwin

*Dallas pilot who, on an
errand of mercy, lost
his life.*

FOREWORD

OUR PURPOSE has been to preserve for you here something of our school in its pioneering days. If, when you are about to "take off" on your last flight, you should find a smile or a tear in this hangar of memories, we shall consider our goal achieved.


Lt. Hegenberger

*Maitland's companion on
this history-making non-
stop flight.*



Lt. Maitland

*Co-pilot of the tri-motored
Fokker monoplane from
California to Hawaii.*

A small, stylized illustration of a biplane flying towards the left, positioned above the 'Order of Books' section.

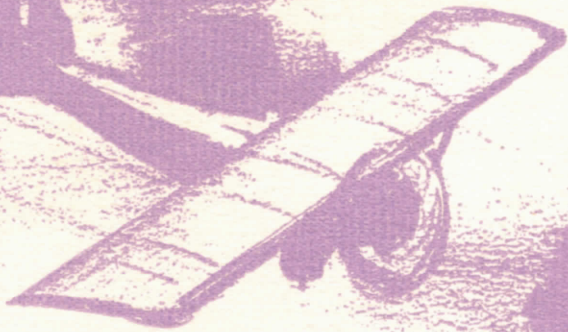
Order of Books

The College
Classes
Activities
Military
Favorites
Athletics
Organizations



DEDICATION

TO OUR MOTHERS, the unheralded pioneers whose fortitude, courage, and heroism are the inspiration for great achievements, do we dedicate the 1929 Junior Aggie.



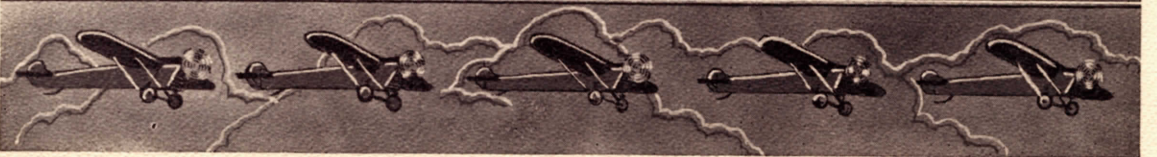
C. E. Rosendahl

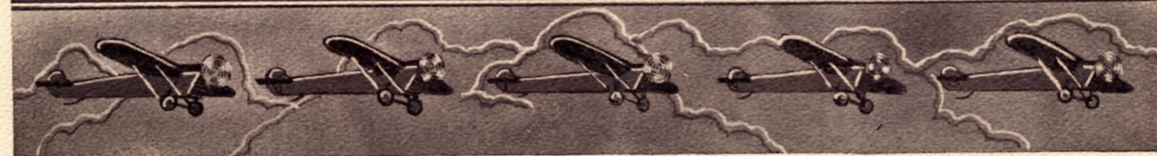
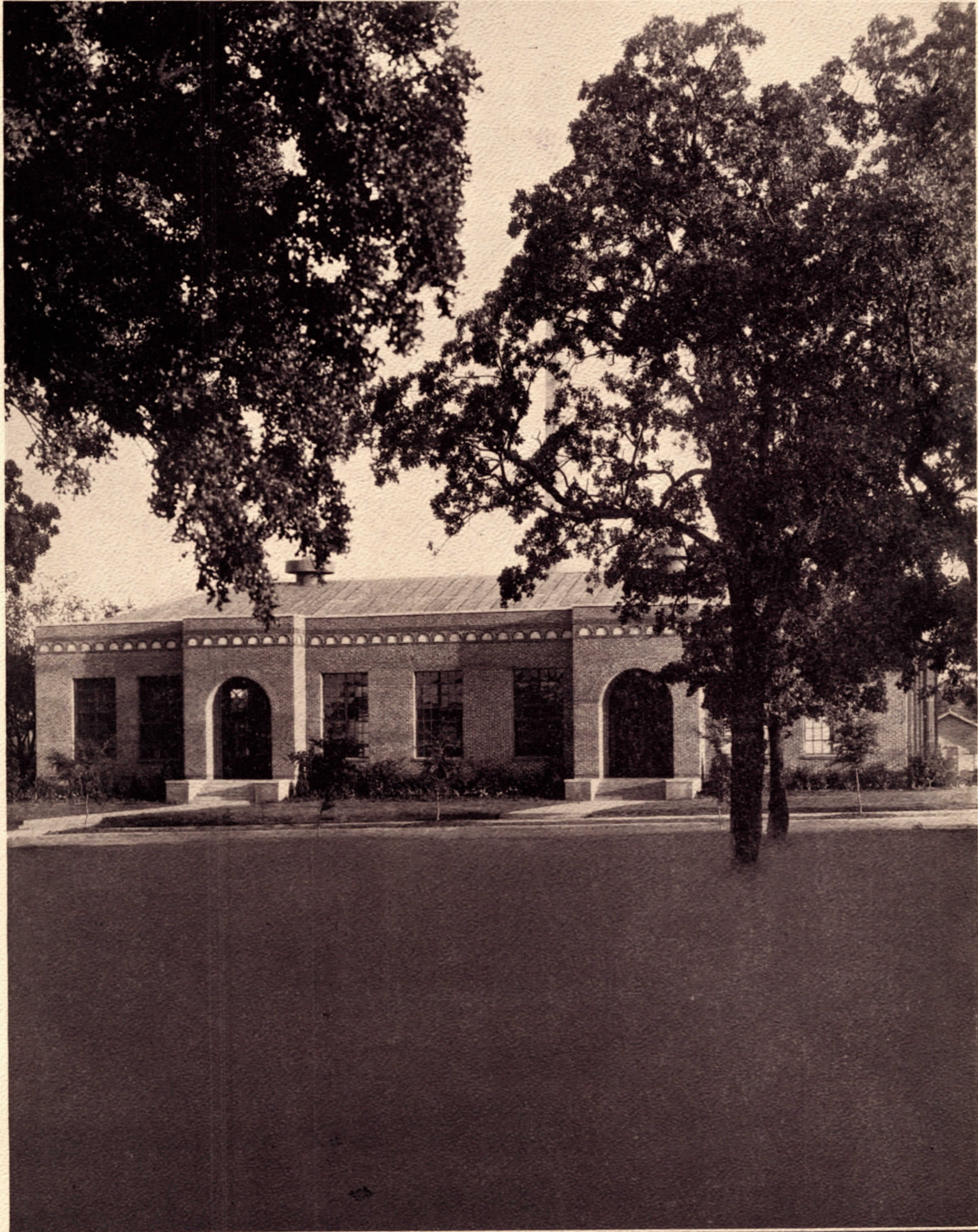
*Commander of the
Los Angeles*

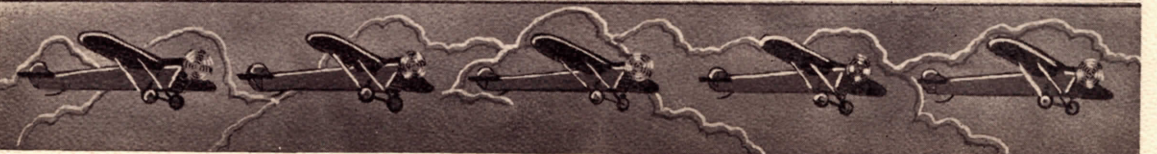


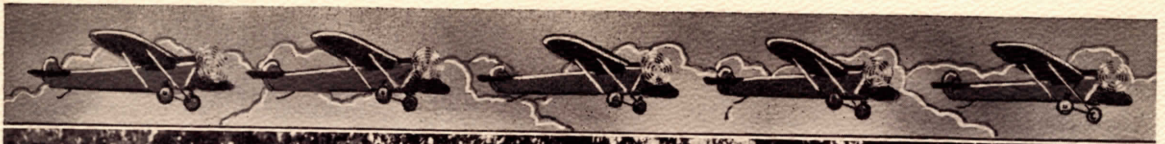
THE COLLEGE















Administration



President T. O. Walton



WE ARE a part of a complex civilization. Competition in the game of life grows keener each day. The hour has struck when those who enter upon life's tasks without adequate preparation can hope to attain no high degree of success. They are entering into an unequal contest with the chances of failure strong against them. They may succeed in a measure, but they cannot hope to succeed in the full measure of their possibilities. They must be content, therefore, to abide among the mediocre who for the lack of ability or opportunity have failed to make proper preparation for life. There are few tragedies greater than the tragedy of wasted human possibilities. Each one of you has the potential possibility of reaching sublime heights of usefulness. The question whether you succeed or fail in this noble enterprise is dependent in the main upon whether you lay the foundation well; whether you have the purpose and determination to spend the time and energy necessary to qualify to meet life's problems effectively and efficiently. It is easy to fall into the course of least resistance, to exchange the hardships of constructive endeavor for the ease and pleasure of the hours; but those who pursue such a course will find that it leads on to mediocrity.

Those who would accomplish big tasks will not find the way easy: it is only through toil and hardships that men and women attain high goals. If you have ambition to succeed in a high degree, do not be over-anxious to enter upon the race of life; but take time enough for adequate preparation. The next few years will decide many of life's issues for you; therefore, use the opportunities for preparation that come to you with the full assurance that in so doing you are pressing toward the goal of highest accomplishment.

—T. O. WALTON .



Dean E. E. Davis



HE NORTH TEXAS AGRICULTURAL COLLEGE is still young as an institution of learning. It stands as a happy, healthful adolescent youth in the fine family of state-supported colleges in Texas. It has ambition and vision. It has all the courage of a pioneer, and is unafraid to try the new when the educational traditions and practices of the past fail to satisfy. It is earnestly endeavoring to meet the needs for practical education in a practical age; to render the maximum of service at a minimum of expense; to assist worthy students with slim pocketbooks and large dreams; to seek quality students rather than large numbers of students at the expense of quality; and to develop personality and the powers of leadership by delegating certain administrative duties to young men and young women of proved ability in the student body, and holding them individually responsible for the duties to which they are assigned.

This young institution is also following the policy of recruiting its instructional staff from year to year with virile, competent young educators, for it believes that education is a work for competent people in the prime of life and not for persons afflicted with the infirmities of old age. With these concepts and ideals steadily before us, and with the help of a sympathetic alumni and a forward-looking clientele, I confidently believe that the day will come when the North Texas Agricultural College will be acclaimed as an educational prophet in the rehabilitation of the educational aims and practices of the Southwest during the first half of the Twentieth Century.

—E. E. DAVIS.



Associate Dean George L. Dickey



THE YOUTH is truly a pioneer. He becomes imaginative, restless, adventurous. He outgrows the boundaries circumscribed by paternal discipline and launches out into a somewhat strange environment to survive or perish. His conservative elders pronounce him a fool for his discontent, but, undaunted, he searches diligently for an ideal place in the world of affairs. His goal is wealth, power, fame. However, he soon becomes convinced that his dream of finding his goal is a fantasy, and he, like a true pioneer, settles down to the arduous task of making for himself a place among men.

The heights to which this pioneering youth climbs in wealth, power, and esteem depends upon two factors. First, he must have the personal qualities which fit him for the inevitable competition with his fellow man. Second, he must choose wisely a place—a point from which to start—which offers opportunities for progress through service. With these two factors patent he must resign himself to a life of work, hardships, and personal sacrifices. His is the task of developing all of the resources incident to his environment.

His environment having been subdued, this now veteran pioneer nonchalantly accepts what his less fortunate admirers denominate success. But old age is now rapidly fastening its clutches upon him. He begins to express his senility like an aged frontiersman by living in the past, telling stories of better days fraught with many successes and few failures. Gradually he surrenders all rights, privileges, and honors of pioneering to the youth of the succeeding generation whose duty it becomes to extend the frontiers of advancement a little further into the unknown. Thus each youth must carry the pioneer's scepter in his own hand if he would guarantee to his successors the blessings of a greater civilization.

—GEORGE L. DICKEY.



CLIFF BARNES
Arlington

N. L. DAVIS
Arlington

S. C. ROWE
Fort Worth

W. H. SLAY
Fort Worth

O. O. TOUCHSTONE
Dallas



The Local Board of Control



THE LOCAL Board of Control consists of members appointed by the Governor of Texas. Four of these members are lawyers and the other is a business man, who is well known in Arlington. The function is to work jointly with the Board of Directors of the Agricultural and Mechanical Colleges, which is located at College Station. All matters passed by this body are submitted to the Board of Directors before they become official. They are interested in seeing this college progress for the benefit of those students whose lives are being trained and influenced by the North Texas Agricultural College.



E. E. DAVIS, *Chairman*
Dean of the College

GEO. L. DICKEY
Associate Dean

D. A. BICKLE
Registrar

J. E. HUDSPETH
Business Manager

W. L. HUGHES
Professor

FRED B. NORRIS
Commandant of Cadets

INA LIPSCOMB
Dean of Women

W. A. RANSOM
Professor



The Executive Committee



HE EXECUTIVE COMMITTEE carries out the policies of the A. & M. System. As the highest ranking unit within this college, it advises with the Dean on all affairs related to changes in curriculum, regulations, admissions, and social activities. Its members are, at all times, ready and efficient in executing policies that make for the good of the student body as a whole.



FACULTY

JONNIE ARNOLD
Secretary to Business Manager

D. A. BICKEL
Professor of Education
B. S., M. A., Missouri University
Registrar

JOE BAILEY
Assistant to Business Manager

ROY W. BURDETT
*Associate Professor of Mechanics
and Related Subjects*
Texas University

ETHEL BARBER
Associate Professor of Foods
B. S., College of Industrial Arts

MRS. W. CHAMBERLAIN
Professor of Clothing
B. S., College of Industrial Arts;
M. A., Southern Methodist University

J. M. BARCUS
Professor of Chemistry
B. A., Baylor University

NORMA CHATHAM
Professor of Music
New York U., Cincinnati Conservatory
of Music, Texas University



FACULTY

E. E. DAVIS ^D
Dean of College
 B. A., M. A., Texas University

GEO. L. DICKEY ^D
Professor of Psychology and Sociology
Associate Dean
 B. S., M. S., Texas A. & M.

H. A. D. DUNSWORTH
Associate Professor of Mathematics
 B. S., North Texas State Teachers
 College; M. A., Southern
 Methodist University

ETHIE EAGLETON ^D
Associate Professor of History
 B. A. Texas University

FRED ERHARD
Professor of Machine Shops and
Assistant Instructor in
Mechanical Engineering
 Texas A. & M.

MRS. JENNIE FLOYD /
Associate Professor of Business
Administration
 B. S., Ohio University; M. A., Southern
 Methodist University

MRS. W. L. HUGHES
Associate Professor of Physical Training
 B. S., San Marcos State
 Teachers College

MR. W. L. HUGHES
Professor of Biology
 B. S., Texas A. & M.



FACULTY

J. E. HUDSPETH ^D
Business Manager
Assistant Professor of Commercial Art
 B. A., North Texas State
 Teachers College

EARL D. IRONS ^D
Director of Band and Orchestra

MRS. JOSIE A. JONES ^D
Nurse
 N. R.

D. H. KIBER ^D
Professor of Agriculture
 B. S., M. S., Texas A. & M.

O. L. KILLIAN ^D
Professor of Biology
 B. A., M. A., Texas University

EARL KIRK
Professor of Woodworking and Drawing
 B. S., Sam Houston State
 Teachers College

INA LIPSCOMB ^D
Dean of Women
Associate Professor of Education
 B. A., Sam Houston State
 Teachers College

ED. L. LOCKHART ^D
Associate Professor of Auto Mechanics



FACULTY

OTTIE LYON
Secretary to the Dean

H. D. McMURTRAY ^D
Professor of Physics
B. S., Mississippi A. & M.

C. A. McCOMBS ^D
Professor of Mathematics
B. S., M. A., Peabody College

J. C. MOORE ^D
*Professor of Physical Training
for Men*
B. S., North Texas State
Teachers College

CHARLES McDONALD ^D
Associate Professor of Chemistry
B. A., Baylor University

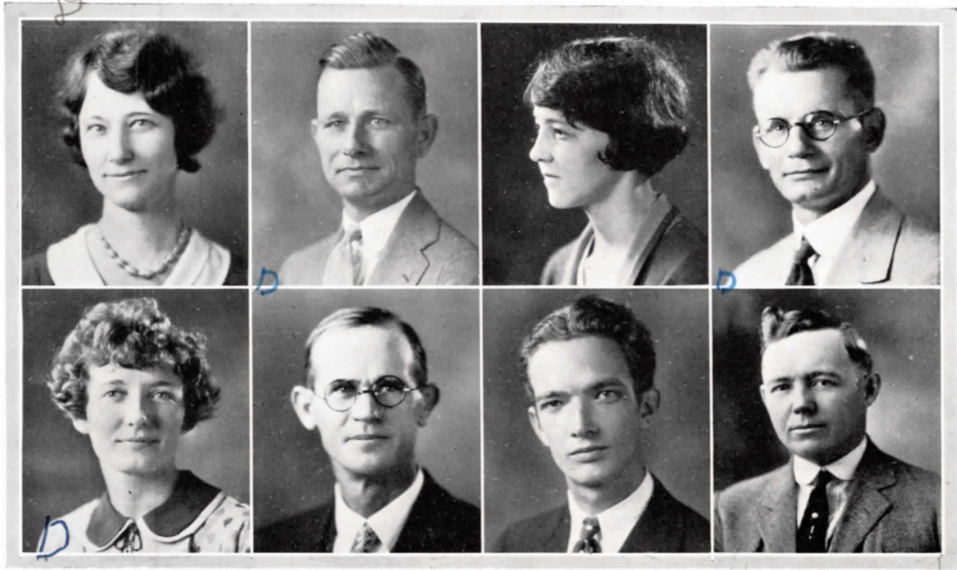
LT. FRED B. NORRIS ^D
Commandant of Cadets
B. S., Texas A. & M.

GERTRUE MAE MCFADDEN
Associate Professor of Music
B. Music, Texas Womans College
New York University

ROSCOE OWENS ^D
Associate Professor of Drawing

JUNIOR AGGIE 1920

Ref Bill Williamson
Dec



D

FACULTY

Ftw MARTYE POINDEXTER ^D
Associate Professor of Applied Arts
North Texas State Teachers College;
University of Chicago

MYRTLE RAWLS ^D
Professor of Modern Languages
B. A., Southern Methodist University

JOE B. PRESTON ^D
Professor of History
B. A., Park College; M. A., Texas
University

C. C. RIGNEY
Director of Engineering and Trades
B. S., Alabama Polytechnic Institute

ZELDA RAMSEY
*Associate Professor of Business
Administration*
B. B. A., B. A., Texas University

DUNCAN W. ROBINSON
Assistant Professor of English
B. A., North Texas State
Teachers College

W. A. RANSOM ^D
Professor of English
B. A., M. A., Kansas University

C. P. RUMPH
Professor of Mathematics
B. A., M. A., Texas University

332-640



FACULTY

J. M. SMITH, JR.
Assistant Professor of Civil Engineering
 B. S., Texas A. & M.

J. E. STAGNER
Associate Professor of Commercial Art
 B. B. A., University of Texas

M. C. STONE
Assistant Director of Trades

J. T. SUMMERHILL
Professor of English D
 M. A., Southern Methodist University
 B. A., Baylor University

PEARL THOMPSON
*Secretary to Associate Dean
 and Registrar*

IONE VICKERY
Secretary to Commandant

W. L. WATSON D
Professor of Business Administration
 B. S., B. C. S., Boling Green
 Business University

MRS. NORA ZEIGLER D
Associate Professor of English D
 B. A., Baylor University, M. A. Southern
 Methodist University



EUGENE DAVIS P
Professor of Architecture
 B. S., University of Texas

M. B. LEBO P
Professor of Horticulture
 B. S., A. & M. College

PEARL WADE
Associate Librarian

E. H. KELTNER
Professor of Military Science and Tactics
 B. A. University of Texas

MRS. B. B. MCCLANAHAN
Librarian
 B. A., Trinity University

OSCAR GRAY
Professor of Vocational Agriculture
 B. S., A. & M. College

JUNIOR AGGIE 1020

Eddie Stinson

*Airplane manufacturer and
holder of the world's record
for hours spent in the air.*



CLASSES





SENIORS

Brother Bagwell class 24

BAGWELL, T. B.
Haskell



BASSETT, ELAINE
Dallas

Avalonte '28-'29; Glee Club '28-'29; Violin Quartet '28-'29; Household Arts' Club '28-'29; W. A. A. '28-'29. Dallas Club.

BELLAMY, JESS
Arlington

Commercial Club '28-'29; Men's Glee Club '28-'29; Bull Pen Society '28-'29.



BRABOY, J. R.
Wellington

Honor Roll '26-'27.

BRANDENBURG, V. K.
Dallas

1st Lt. Crack Co. '27-'28; Vice-Pres., Bull Pen Society '28-'29; Dallas Club.



BROWER, C. W.
Arlington

Assistant Business Manager, Junior Aggie '26-'27; Business Manager, Junior Aggie '27-'28; Sec'y Pre-Med Club '27-'28; Men's Glee Club '28-'29.

BROWN, DORIS
Arlington

Phi Kappa Theta '27-'28, '28-'29; Art Editor, Junior Junior Aggie '28-'29; Sans Soci '28-'29; Household Arts Club; Honor Roll '27-'28.



BRYAN, H. L.
Freeport

Engineers' Club '28-'29; Band '27-'28, '28-'29.



JUNIOR AGGIE 1929

BURRESS, LUCILE

Arlington

Household Arts' Club, '28-'29; Commercial Club '28-'29.



BUTCHER, THELMA

Arlington

Chorus '26-'27-'28-'29; Household Arts' Club '26-'27-'28-'29; Athenian '28-'29.



CASEY, NEWMAN

Tuscola

Sergeant '27-'28; 2nd Lt. Co. A '28-'29; Reserve Basketball '27-'28; Reserve Football '28-'29; Honor Roll '26-'27; Mountaineers' Club '27-'28; Officers' Club '28-'29; Annual Staff '26-'27-'28-'29.



CHRISTMAN, MABLE

Arlington

Commercial Course.



COCKRELL, HOYT

Goldthwaite

General Course.



COLEY, GEORGE T.

Dallas

Capt. D Co. '28-'29; Honor Roll '27; Editor, Junior Aggie '28-'29; Pres., Bull Pen Society '28-'29; Vice-Pres., Dallas Club '28-'29; Pres., Athenian Club '28; Phi Kappa Theta '27-'28-'29; Engineering Society '28-'29.



COLEY, JOY

Dallas

Pres., W. A. A. '28-'29; Annual Staff '28-'29; Sec'y-Treas., Phi Kappa Theta '28-'29; Phi Kappa Theta '27-'28-'29; Household Arts Club '27-'28-'29; W. A. A. '27-'28-'29; Dallas Club '27-'28-'29.



COLLINS, EVELIN

Arlington

General Course.



JUNIOR AGGIE 1000

COOPER, BILL
Dallas

Sergeant of Band '27-'28; Lt. in Band '28-'29; Shorthorn Staff '28-'29; Annual Staff '28-'29; Glee Club; Athenian Club; Officers' Club; Engineering Club; Lead in "Mikado" '29.

CREECY, JOHN E.
Kemp

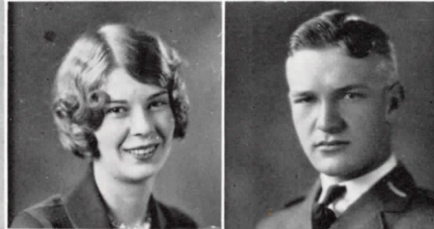
Capt. Band '28-'29; Track Letter '27; Capt. Football '28-'29; Letter Baseball '27-'28; Officers' Club '27-'28-'29; "T" Association '28-'29; Mahogany Club '26-'27.

DOYLE, MILDRED
Dallas

Commercial Club '28-'29; Little Theatre '27-'28-'29; Sans Souci, President '28-'29; Household Arts' Club '28-'29; W. A. A. '28-'29.

FERGUSON, MURRAY
Arlington

Business Administration.



COWAN, DORIS
Arlington

W. A. A. '28-'29; Household Arts' Club '27-'28-'29.

DAVIS, RUTH
Arlington

Avolente '28-'29; Household Arts' Club '27-'28-'29; Reporter Household Arts' '28-'29; Little Theatre '27-'28; W. A. A. '28-'29.

FAGG, J. NOEL
Blue Ridge

Mahogany Club '26-'27.

FITZ, D. V.
Jewett

Sgt. Co. A '28-'29; Honor Roll '27-'28; DeMolay Club '28-'29; Sgts. Club '28-'29; Engineers' Society '28-'29; Glee Club '28-'29; Shorthorn Staff '28-'29.



JUNIOR AGGIE 1020

Los Angeles

FRY, JESSE
Mansfield

1st Lt. Co. A '28-'29; 2nd Lt. Co. C '27-'28; Crack Co. '27-'28; Officers' Club '27-'28-'29; Bull Pen Society '28-'29; Commercial Club '28-'29; No demerit honor roll four times.

FOWLER, CHRISTINE
Arlington
Post Graduate Course.

Hull (wife)

GENTRY, ELBERT
Decatur Military

Corporal '28-'29; Track '27-'28; Reserve Football '27-'28; Engineering Society.

GREGORY, COSTON L.
Handley

Ft. Worth Club '28-'29; Bull Pen Society '27-'28-'29; Engineering Society '28-'29; College Orchestra '27-'28-'29.



FORD, HOLLIS P.
Turnersville

Cadet Major, Commanding Corps '28-'29; President, Officers' Club '28-'29; Most efficient commissioned officer '27-'28; Capt., Commanding Best Drilled Co. '27-'28; Capt., Winner of Frank Bros. Trophy; Foreman College Dining Hall '28-'29; Live Stock Judging Team '26-'27; Hoof and Plow Club '26-'27.

FOWLER, GORDON R.
Arlington

Honor Roll '26-'27-'28; Athletic Editor, Junior Aggie; Athletic Editor, Shorthorn; Letter Shorthorn '27-'28; Phi Kappa Theta; Commercial Club; Press Club '27-'28; Sergeant of Band '27-'28.

GREEN, DOROTHY
Dallas

General Course.

HARDEMAN, ANNA
Dallas

Household Arts Club '27-'28-'29; Commercial Club '27-'28; Little Theatre '27-'28; Dallas Club '27-'28-'29.



JUNIOR AGGIE 1929

HAMILTON, EDITH
Dallas

W. A. A. '28-'29; Phi Kappa
Theta '28-'29; Dallas Club
'27-'28; Commercial Club '28-
'29; Jr. Aggie Staff '28-'29;
Shorthorn Staff '28-'29.



HARGRAVE, AUSTEN J.
Dallas

1st Lt., Quartermaster '28-
'29; Feature Editor, Junior
Aggie '28-'29; Pres., Bull
Pen Society '27-'28; Pres.,
Dallas Club '27-'28-'29; Vice-
Pres., Mountaineers '27-'28;
Engineers Society '27-'28-'29;
Athenian Club '28-'29; Bull
Pen Society '26-'27-'28-'29.



HARRINGTON, WINNA
Grapevine

Household Arts Club '28-'29;
W. A. A. '28-'29.



HOLMES, A. J.
Jewett

Engineers Society '28-'29.

HOOD, JOE
Alvarado

General Course.



HORTON, ROBERT E.
Fort Worth

Drum Major '27-'28-'29;
Athenian Club '28-'29; Ser-
geants Club '28-'29; Commer-
cial Club '27-'28-'29; Fort
Worth Club '27-'28-'29; Glee
Club '27-'28-'29.

HUDSPETH, BILL
Arlington

2nd Lt., Band; Tennis Letter
'27-'28; Capt., Tennis Team
'28-'29; Shorthorn Staff '27-
'28-'29; Business Manager,
Junior Aggie '28-'29; Pres.,
Commercial Club '28; Pres.,
Tennis Club '29; T. Associa-
tion '28-'29.



JACKSON, ROBERT T.
Arlington

Crack Co. '26-'27; 2nd Lt.
'28-'29; Football '26-'27-'28;
Basketball '27-'28-'29; Base
Ball '27-'28-'29; Officers Club
'28-'29; T. Association '28-
'29; Junior Aggie Staff.



JUNIOR AGGIE 1020

JONES, FREDNA MAE
Dallas

Avolente Club '27-'28-'29;
Dallas Club '27-'28-'29; Com-
mercial Club '27-'28.



JOSEY, JNO. D.
Hope, N. M.
Engineers Club.

LESLIE, MARGARET
Grand Prairie

Household Arts Club '27-'28-
'29; Commercial Club '28-
'29; Sans Souci '28-'29;
Athenian Club '28-'29; Dra-
matic Club '27-'28.



MAXEY, EDWARD E.
Rush Springs, Okla.

1st Sgt. Co. B '28-'29; Pres.,
Sergeants Club '28-'29; Letter
Football '27-'28-'29; Letter
Basketball '27-'28-'29; Letter
Baseball '28-'29; Capt. Basket-
ball '28-'29; T. Assn. '28-'29;
Vice-Pres., Athenian Club
'28-'29; Glee Club '27-'28-'29.

MAYO, RUTH
Kirven

Avolente Club '28-'29; Athen-
ian Club '28-'29; Household
Arts Club '28-'29; Choral
Club '28-'29; Chorus '27-'28;
Solo Quartette '28-'29; Girls
Chorus '28-'29.



MCCOOL, MARIE
Grand Prairie

Commercial Club '28-'29;
Household Arts Club '27-'28-
'29; Sans Souci '27-'28-'29;
Athenian Club '28-'29.

MEIER, L. G.
Mt. Pleasant

Commercial Club '27-'28-'29;
Athenian Club '28-'29; De-
Molay Club '28-'29; Publica-
tion Staff; Sergeants Club;
Business Manager, Short-
horn '28-'29.



MURRAY, H. DEAN
Merkel

Sergeant '28-'29; Football
'28-'29; Sergeants Club '28-
'29; Engineering Society '28-
'29; Glee Club '27-'28-'29.



airington
polly

NEWTON, CLITUS A.
Midlothian

Engineering Society '28-'29;
Sec'y and Treas., Engineering
Society '28-'29.

NOBLES, LOUISE
Arlington

Honor Roll '27-'28; House-
hold Arts Club '27-'28-'29;
Athenian Club '28-'29; Little
Theatre '27-'28; W. A. A.
Reporter, Shorthorn Staff
'28-'29.

PAYNE, WALTER H.
Dallas

Yell Leader '28; Shor ton
Staff '27-'28; Color Sergeant
'28-'29; Crack Company '27;
Dallas Club; Mountaineers
Society; Bull Pen Society
'27-'28; Sergeants Club.

POLLEY, DELBERT T.
Merkel

General Course.

RAY, ERNEST
Mansfield

Bull Pen Society '27-'28-'29.



NICKS, EUGENIA
Dallas

W. A. A. '28-'29; Phi Kappa
Theta '28-'29; Glee Club '27-
'28-'29; Household Arts Club
'28-'29; Dallas Club '27-'28-
'29; Accompanist String
Quartet.

OEHLKE, ANNIE MAE
Garland

Honor Roll '25-'26; House-
hold Arts Club '25-'26-'27-'28.

PICKENS, OLGA L.
Mexia

Household Arts Club '27-'28;
Vice-Pres. Household Arts
Club '28-'29; Sans Souci '28
'29; Little Theatre Club
'27-'28.

PRINGLE, CORDEL
Thornton

Sergeant '27-'28; Crack Co.
'27; Ft. Worth Club '26-'27-
'28; Mountaineers Club '26-
'27; Sergeants Club '27-'28,
Commercial Club '27-'28.

REEVES, SIDNEY S.
Midlothian

Shorthorn Staff; Junior
Aggie Staff; Amalgamated
Sons of Rest; Color
Sergeant '28-'29.



JUNIOR AGGIE 1920

call - ask
336-8155

**RICHARDSON,
VIOLET A.**

Arlington
Pres., La Docena Club '28-'29;
Athenian Club '28-'29.

SEALE, TOM
Alvarado

1st Lt. Co. D '28-'29; Letter
Football '26-'27-'28-'29; Letter
Baseball '26-'27-'28-'29;
Officers Club '27-'28-'29;
Pres., T. Association '28-'29;
Vice-Pres., Senior Class
'28-'29.

SMITH, CLYDE B.
Dallas

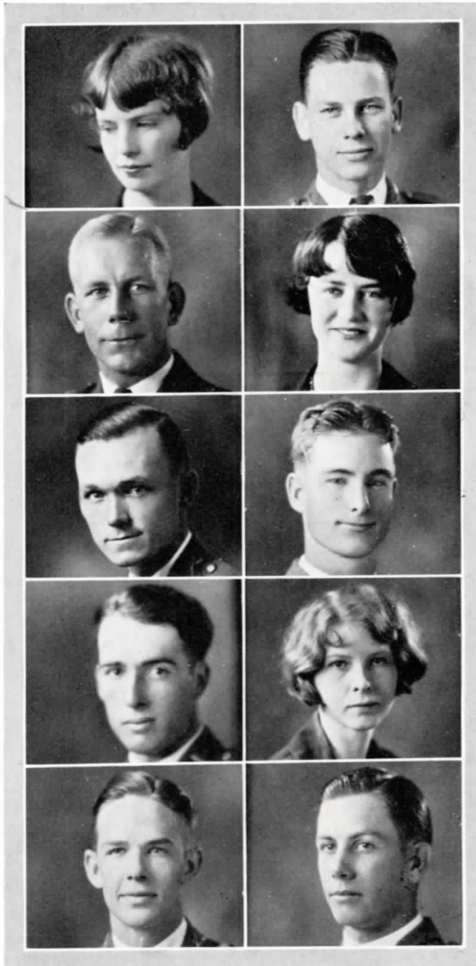
2nd Lt. Co. D '28-'29; Offi-
cers Club '28-'29; Engineer-
ing Society '28-'29; Dallas
Club '28-'29; Bull Pen
Society.

SPENCE, JOHN P.
Kemp

Sergeant '28-'29; Sergeants
Club '28-'29; T Association
'28-'29; Football '26-'27-'28
'29; Mountaineers Club
'27-'28.

SWIFT, BILLY B.
Fort Worth

Best Drilled Man '26-'27;
Most Military Man '27-'28;
Capt., Best Drilled Co. '27-
'28; Pre-Med. Club '27-'28
'29; Ft. Worth Club '27-'28
'29; Officers Club '26-'27-'28-
'29; Pres., Senior Class '28-
'29; Student Assistant in
Biology



SCHUTTS, WM. C.
Fort Worth

2nd Lt., Co. C '28-'29; Rifle
Team; Sec'y and Treas.,
Senior Class; Pres., Fort
Worth Club; Vice-Pres.,
Engineering Society; Offi-
cers Club, Athenian Club,
Art Editor, Junior Aggie.

SEWELL, ANNE
Jacksboro

Sans Souci, Sec'y and Treas.
'28-'29; Household Arts
Club '28-'29.

SMITH, LOVETT
Arlington

Athenian Club '28-'29; Glee
Club '27-'28-'29.

STACKS, NELLIE MAE
Handley

General Course.

TAYLOR, J. W.
Fort Worth

Reserve Letter Football;
Engineering Society; Fort
Worth Club '27-'28-'29; T.
Association '28-'29; Phi
Kappa Theta '28-'29.



JUNIOR AGGIE 1020

Modern
page

THRASH, RURIE D.

Arlington

Little Theatre '27-'28; Athenian Club '28-'29; W. A. A. '28-'29; Household Arts Club '28-'29; Sans Souci '28-'29; Choral Club '28-'29.

WADE, DORIS

Arlington

Household Arts Club '26-'27-'28-'29; Avolente Club '26-'27-'28-'29; W. A. A. '26-'27-'28-'29; Little Theatre '27-'28; Annual Staff '27-'28-'29; Sponsor to Sergeants Club '28-'29.

WHITEHEAD, STEVA R.

Arlington

Phi Kappa Theta, Pres., '28-'29; Household Arts '27-'28-'29; Commercial Club '27-'28; Little Theatre '27-'28; Athenian Club '28-'29; Editor, Shorthorn '28-'29; W. A. A. '28-'29.

WILLIAMSON,

CATHERINE

Arlington

Junior Aggie Staff '27-'28; Pres., Avolente '28-'29; Vice-Pres., W. A. A. '28-'29; Little Theatre '27-'28; Household Arts Club '27-'28-'29; Commercial Club '28-'29.

WILSON, RALPH W.

Irving

Bull Pen Society '27-'28-'29; Engineers Society '28-'29; Honor Roll '27.



VICTORY, NEIL

Arlington

Pres., Household Arts Club '27-'28; W. A. A. '28-'29.

WADZECK, MARK B.

Rochester

Football '27-'28-'29; Haskell County Club '27-'28; Glee Club '27-'28.

WHITSON, IVA LEE

Arlington

La Docena Club '26-'27-'28-'29; Household Arts Club '28-'29; W. A. A. '28-'29; Secretary, La Docena '28-'29.

WILSON, OLIVER

Irving

Choral Club '27-'28; Orator '27-'28; Commercial Club '28-'29; Bull Pen Society '27-'28; Glee Club '28-'29.

WOODS, W. TYSON

Dallas

Honor Roll '27; Bull Pen Society '27-'28-'29; Dallas Club '27-'28-'29; Engineering Club '28-'29.



JUNIOR AGGIE 1020



JUNIORS

ALVERSON, VIRGINIA
Dallas



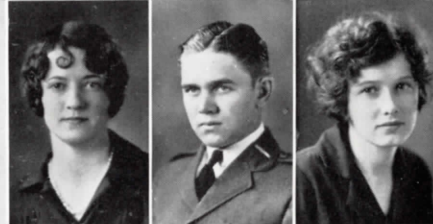
BAKER, J. W.
Fort Worth

BALLINGER, POPE
Alvarado



BEATY, MADISON
Grand Prairie

BIGGERS, EVA
Arlington



BRADSHAW, LOLA MAE
Fort Worth

BRAGG, MANSELL
Rochester



BRITT, RUBY
Fort Worth

BAIN, V. C.
Caldwell

BEASLEY, CARLENE
Arlington

BOWERS, RICHARD
Caldwell

BREWER, MAMIE LEE
Fort Worth

JUNIOR AGGIE 1000

BRUMMETT,
HAYWOOD
Grand Prairie



BUSSEY, THETA
Handley

CAPERTON, ROBERT
Dozier



CELEY, J. C.
Frankston

CHAUNCEY, JAMES
Fort Worth



CONLEE, WILLIAM
Arlington

CONNOR, THOMAS
Arlington



CHRISTMAN, FRED
Arlington

BULLOCK, MARCEL
Rogers

CEARLEY, JOHN
Post

COLLINS, TOM
Groveton

COOPER, JUANITA
Fort Worth

JUNIOR AGGIE 1929

CHRISTOPHER, M. C.
Arlington



DAVIS, NATALIE
Arlington

DICKEY, ELIZABETH
Dodd City



DUGAN, TOM
Fort Worth

DUKE, PALMA
Handley



EVANS, DOYLE
Olney

FAITH, DOUGLAS
Decatur



FORD, GEORGE
Fort Worth

FOX, JEFF
Decatur



GODFREY, GROVER
Dallas

GREER, GENEVIEVE
Arlington



HADEN, W. C.
Ladonia

*Mrs. Alice
Hornby*

DAHNIKE, ANGIE
Grand Prairie

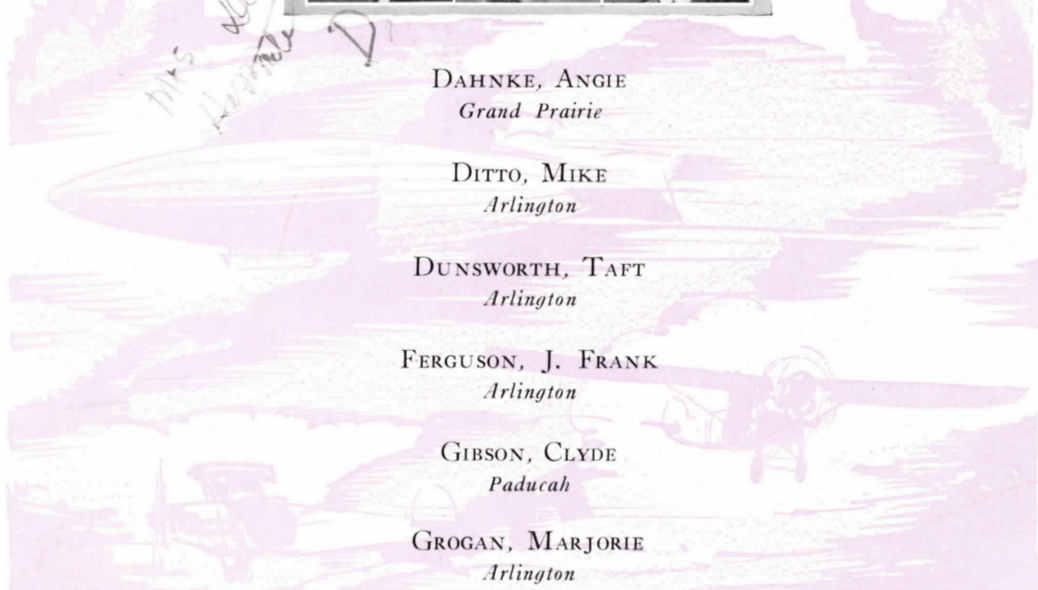
DITTO, MIKE
Arlington

DUNSWORTH, TAFT
Arlington

FERGUSON, J. FRANK
Arlington

GIBSON, CLYDE
Paducah

GROGAN, MARJORIE
Arlington



JUNIOR AGGIE 1920

HAHN, MARTHA
Arlington



HAMPTON, WADE
Decatur

HARBIN, KARL
San Angelo



HARVEY, FRANCIS
Arlington

HEARD, WILLIAM
Arlington



HERRING, BERNICE
Mineral Wells

HESTER, IRA
Haskell



HOLLINGSWORTH,
DORRIS
Grapevine

HOLLINGSWORTH,
HELEN
Grapevine



HEMMELE, IRVIN
Arlington

HOWARD, W. J.
Dallas



HUFFMAN, MARY
KATE
Grapevine

HALL, HOWARD
Grand Prairie

HART, VIRGIE
Mansfield

HERNDON, COLE
Fort Worth

HIETT, ANN
Arlington

HOWARD, DOW T.
Nocona

HUDSPETH, BONNIE
Arlington

JUNIOR AGGIE 1929

HUGHES, JOHN L.
Fort Worth



HUNT, JOE
Olney

HUTCHINSON,
MARJORIE
Arlington



JARRATT, DOROTHY
Arlington

JOHNS, MAURICE
Arlington



JOHNSTON, P. H.
Arlington

JOINER, ELIZABETH
Arlington



JONES, PERRIE
Killeen

KEISLER, LESTER
Richardson



KINGSTON, WILENA
Arlington

KOTT, LORENE
Jerwett



LEONARD, LEE
Richardson

HULL, URSULA
Fort Worth

ILLINGSWORTH, R.
Dallas

JOHNSON, HAYDEN
Arlington

JONES, DAVID
Dallas

KEITH, CELETA
Arlington

LANGDON, BONNIE LEE
Fort Worth

JUNIOR AGGIE 1920

MALAISE, GEORGE
Handley

McCOWN, MARY
CARR
Fort Worth

McLARTY, JONNIE
Dallas

MORELAND, ALICE
Fort Worth

NEVILLE, GENEVIEVE
Dallas

ODOM, ROBERT
Memphis



McCOWN, DOROTHY
Fort Worth

McKISSICK, OUIDA
Arlington

McMURRAY, CHAS.
Dallas

NEECE, JOHN A.
Shamrock

ODOM, J. A.
Memphis

PATTERSON, COMER
Merkel

MASON, J. T.
Vernon

McDANIEL, AILEEN
Arlington

McMAINS, D. M.
Dallas

NASH, ELIZABETH
Mansfield

NOWLAIN, L. T.
Grand Prairie

OWEN, DONNA MAE
Dallas

JUNIOR AGGIE 1929

PEARSON, ROBERT
Memphis



PENDER, ROY
Dallas

PETERSON, R. O.
Lexington



RATLIFF, L. D.
Haskell

RAY, BERNICE
Mansfield



ROBINSON, W. W.
Naples

ROCK, HERNDON
San Antonio



ROUSE, WILLIAM
Arlington

SANDERS, LOUISE
Grand Prairie



SHEFFIELD, HOMER
Crosby

SELLERS, LYDIA
Fort Worth



SHEPPARD, JOYCE
Dallas

PEED, FRANCES
Grand Prairie

POLLARD, ELIZABETH
Dallas

REEDER, THERON
Fort Worth

ROGERS, OPAL
Dallas

SCHMUCK, RUDOLPH
Arlington

SHAW, GRACE
Dallas

JUNIOR AGGIE 1929

SCOTT, GEORGE
Dallas



SIDDALL, MARGARET
Grand Prairie

SMITH, C. L.
Talbert



SMITH, GARLAND
Caldwell

STOUGH, CYNTHIA
Blooming Grove



TABER, ETHEL
Garland

TABER, NOLA
Garland



TALKINGTON, A. L.
Fort Worth

TAYLOR, HOWARD
Fort Worth



TIMS, RAYMOND
Arlington

TODD, ESTELLE
Grand Prairie



UNDERWOOD, C. W.
Denton

PIKE, OLIVER
Bradshaw

SMITH, EFFIE
Arlington

SWAIN, BUFORD
Bridgeport

TALBOTT, WILLIAM
Calotula

THOMPSON, RUBY
Carrollton

TUCKER, PAULINE
Arlington

JUNIOR AGGIE 1929

VANDAVEER, THEO
Arlington

WALKER, NAOMI
Fort Worth

WHELLER, R. S.
Fort Worth

WILLIAMS, L. D.
Spur

WILSON, GRACE
Fort Worth

YOAKUM, W.
Newark



WAGGONER, JOEL
Grand Prairie

WELLS, JULIAN
Fort Worth

WHEAT, HARVEY
Grand Prairie

WILMUT, INEZ
Cedar Hill

YARBOROUGH, TOM
Weslaco

YOUNGBLOOD, JOHN
Waco

WAGGONER, BLANCHE
Dallas

WELLER, N. O.
Malakoff

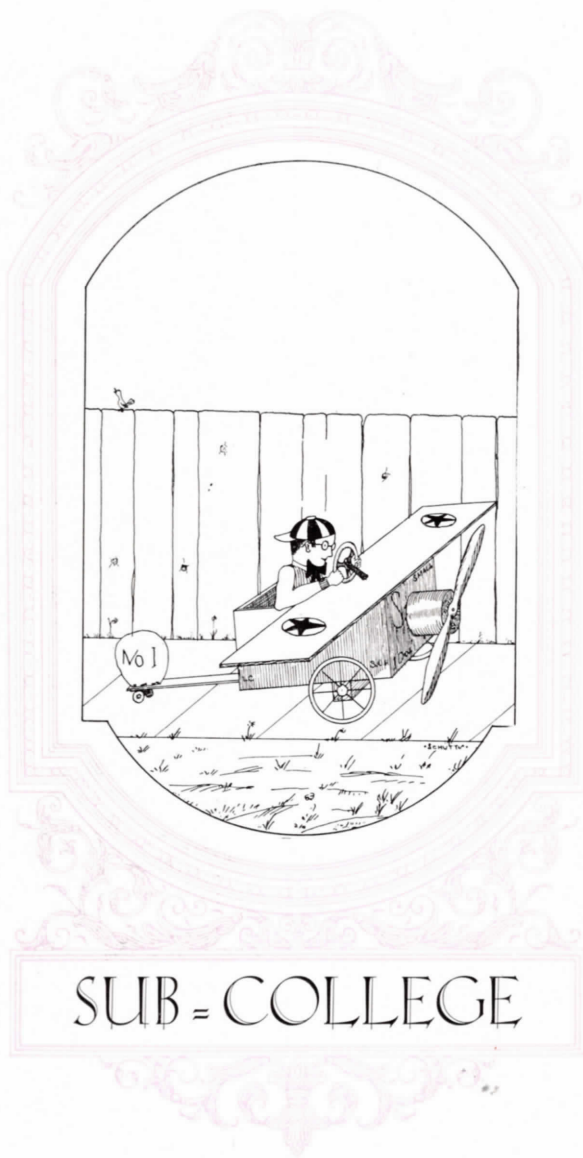
WILKERSON,
MOZELLE
Leonard

WILLIS, FANNIE MAE
Mansfield

WOOD, BILLIE
Richards

YOUNG, HESTA
Kosse

JUNIOR AGGIE 1929



SUB = COLLEGE

BALL, CLAUDE
Arlington

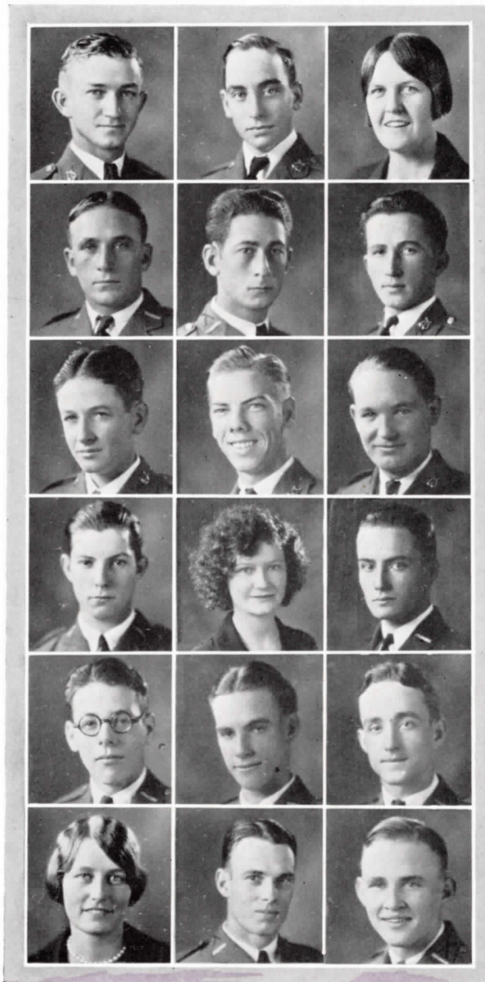
CONDON, CLEO
Throckmorton

FERGUSON, JIM
Haskell

FREEMAN, REX
Fort Worth

HAGEDORN, HERMAN
Dallas

LANGDON, MARION
Crosby



BRADFORD, MARY
ALICE
Arlington

CHAUDOIN, OTTIE
Dodsonville

FRANKS, GUY
Fort Worth

HAESLEY, GERSON
Fort Worth

HOWARD, WILLIAM
Dallas

HOYLER, JOE
Longview

BAXTER, ROBERT
Shamrock

COTTER, OBIE
Foss, Okla.

FISK, WILLIAM
Fort Worth

GEESLIN, FRANCES
Goldthwaite

HESTER, PERRY
Lexington

KOURT, ALONZO
Dalhart

JUNIOR AGGIE 1929

LENNEN, LESLIE
Iowa Park

OWENS, C. A.
Arlington

RIGNEY, GLADYS
Arlington

RUSSELL, EDWARD
Paris

STEDHAM, OLEN
Crystal City

STOUGH, CYNTHIA
Blooming Grove



MANSSELL, PAUL
Rochester

PEARCE, JESSE
Burleson

ROBINSON, HENRY
Chorsby

SESSIONS, CLYDE D.
Wells

STEWART, CORNELIA
Arlington

TROUTT, ROY
Bonham

MOAG, ORVILLE,
Wichita Falls

PASS, L. D.
Heidenheimer

ROBERTS, G. E.
Rockport

SESSIONS, CARL
Wells

STEPHENSON, ROBERT
Hennedate

SWAIN, MATTIE
Arlington

JUNIOR AGGIE 1020

TUCKER, PAULINE
Arlington

YATES, DIXIE
Arlington

HENDERSON,
MARGARET
Arlington

KATZMAREK, LOUIS
Panna Maria, Tex.

NANCE, TRUMAN
Cedar Hill

WILSON, DAROLD
Jacksonville



WIGGINS, LEVIS
South Bend

FARRAR, MARY
Texarkana

IVEY, E. L.
Dallas

MCNAIR, DOROTHY
Fort Worth

STANLEY, FRANK
Fort Worth

ZUEFELDT, JONNIE
Arlington

TYSON, LUCILE
Lubbock

BONDURANT, DORIS
Arlington

HODGE, WALTER
Cincinnati, Ohio

MCCOOL, LUCIAN H.
Grand Prairie

PAYNE, CECIL
Denton

YOAKUM, WILLIE
Newark

JUNIOR AGGIE 1920



“CO = OPS”

BAKER, E. B.

Center

Co-op. Agri.
College Farm

CARLOCK, FLOYD

Joshua

Bus. Ad.
Brown Cracker & Candy Co.
Dallas

COOK, BYFORD

Bowie

Prac. Elec.
Hugh-Cooper Co., Dallas

DEMPSEY, T. R.

Childress

Bus. Ad.
General Office Texas &
Pacific Railroad, Dallas

DODSON, EDWIN

Fort Worth

Prac. Elec.
P. M. Bratten Company
Fort Worth



CANTRELL, WELDON

Plainview

Auto Mech.
Rileys Garage, Arlington

CLARK, T. W.

Waelder

Prac. Elec.
Magnolia Gas Company
Bethany, La.

CROUCH, O. M.

Nevada

Prac. Elec.
Southwest Bell Telephone Co.
Dallas

DEWALD, W. D.

Copperas Cove

Co-op. Agri.

ELLIS, KATHERINE

Burkburnett

Bus. Ad.
Striping Department Store
Fort Worth

BURNETT, HONLON

Martins' Mill

Prac. Elec.
West Texas Utilities
Abilene, Texas

CASTLEMAN, LUTHER

Olney

Auto Mech.

CURRY, ELDRED

Frankston

Bus. Ad.

DERRYBERRY, L. C.

Decatur

Co-op. Agri.
Village Creek Farm

DUDERSTODT, MURRAY

Lytle

Prac. Elec.
Hugh-Cooper Co., Dallas

JUNIOR AGGIE 1920

EVERETT, O. C.

Canton

Gen. Elec.
P. M. Bratton Co.
Fort Worth

FINCH, JAMES S.

Chatfield

Elec. Engin.
Hugh-Cooper Co., Dallas

GOODNIGHT, ALTON

New Boston

Agri.

GUY, MARVIN

Carbon

Bus. Ad.
Brown Cracker & Candy Co
Dallas

HARRIS, HOMER

Argyle

Elec. Engin.

FINCH, JAMES H.

Chatfield

Part Time Agri.
College Farm, Arlington

FRY, LOUIS

Leonard

Auto Mech.
Cook Teague Chevrolet
Fort Worth

CRAFT, PAUL

Lozva Park

Agri.
Agricultural Experiment
Station, Wichita Falls

HARRIS, CHARLES

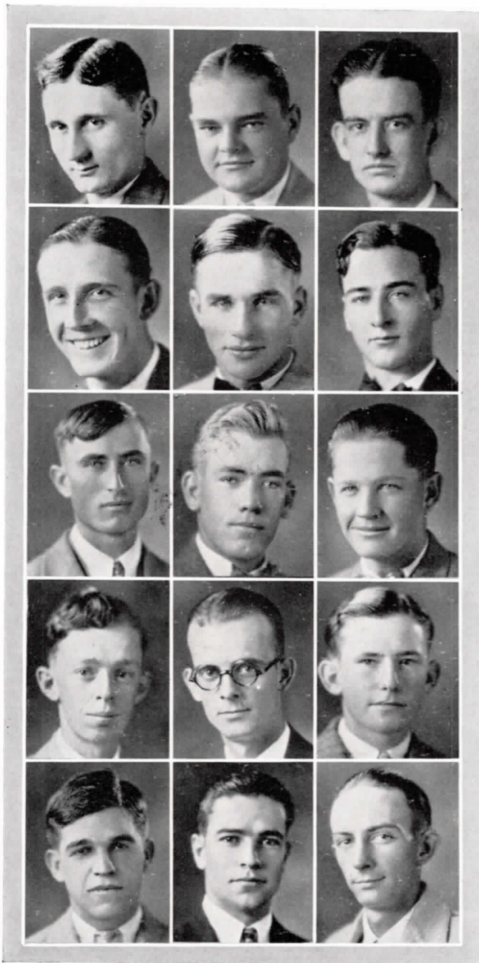
Pilot Point

Elec. Engin.
Southwest Bell Telephone Co
Dallas

JETER, BYNO

Arlington

Elec. Engin.
Magnolia Gas Company
Bethany, La.



FELLMY, GUY

Snyder

Elec. Engin.
Southwest Bell Telephone Co
Fort Worth

FOSTER, LUTHER

Red Oak

Elec. Engin.
Hugh-Cooper Co., Dallas

GRACEY, CLYDE

Dallas

Auto Mech.
Thannish Chevrolet
Arlington

GERON, FRANK

Harris

Bus. Ad.
Brown Cracker & Candy Co.
Dallas

HOOKS, ARLIE

Onalaska

Bus. Ad.
Nash Hardware Co.
Fort Worth

JUNIOR AGGIE 1929

JOHNSON, C. B.
Cranfill Gap
Agri.



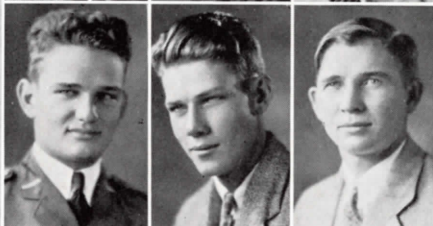
JOHNSON, PASCHAL
Trail, Okla.
Agri.

JOHNSON, S. A.
Mirando City
Auto Mech.



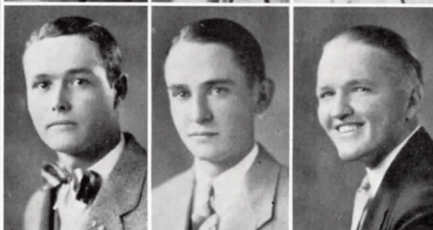
JOINER, W. M.
Arlington
B. A.
Schoellkopf Co., Dallas

JONES, PERRY
Killeen
Auto Mech.
Thannisch Chevrolet Co.



KEISLER, LESTER
Richards
Elec. Eng.

KINZY, C. W.
Marshall
Co-op. Elec.
Texas & Pacific Railroad Co.



LOWANCE, A. R.
Decatur
Agri.

JOHNSON, HOWARD
Lylle
Elec. Eng.
West Texas Utility Co.
Abilene

JOHNSON, WANETTA
Fort Worth
B. A.
Monnigs Dept. Store

JONES, R. A.
Paducah
B. A.
Brown Cracker & Candy Co.
Dallas

LEONARD, LEE
Richards
Elec. Eng.

LUCKEY, L. T.
Monticello, Ark.
 Auto Mech.



MCGWAN, A. C.
Longview
 Elec. Eng.
 Hugh-Cooper Co., Dallas

NORMAN, NORWOOD
Fort Worth
 Gen. Elec.
 Southwest Bell Telephone Co.
 Fort Worth



PARKS, C. K.
Paris
 B. A.
 Pittsburgh Plate Glass Co.
 Dallas

PEDEN, W. C.
Clarksville, Ark.
 Part-Time Elec.
 Magnolia Gas Co.
 Dallas



PRITCHETT, S. H.
Dallas
 B. A.
 Pittsburgh Plate Glass Co.
 Dallas

RAY, NOBLE
Pittsburg
 Elec. Eng.



SEARS, GRAHAM
Mount Enterprise

MARTIN, W. E.
La Feria
 Agri.

PARKS, EARL H.
Dilley
 Elec. Eng.
 West Texas Utility Co.
 Abilene

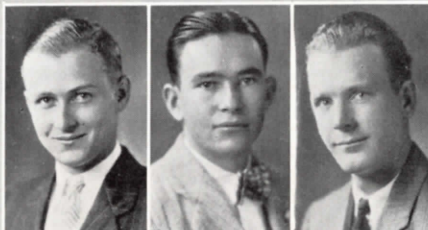
PITTS, MARCUS
Red Oak
 Elec. Eng.
 Hugh-Cooper Co., Dallas

ROLLINS, CLARENCE
Decatur
 Elec. Eng.
 West Texas Utility Co.
 Abilene

SHEFFIELD, CHARLES

Onalaska

B. A.
Schoellkopf Co., Dallas



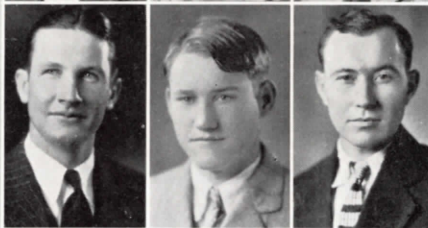
SORENSEN, PAUL

Elec. Eng.
West Texas Utility Co.
Abilene

STEWART, CLYDE

Dallas

Gen. Elec.
Hugh-Cooper Co., Dallas



WILLIAMS, EUGENE

Franklin

Auto Mech.
Foster P. Jennings Co.
Fort Worth

WILSON, E. H.

Silsbee

B. A.
General Office Texas &
Pacific R. R., Dallas



WRIGHT, SIDNEY

Arlington

B. A.
Cullum Boren & Co.
Dallas



SMITH, HUGH

Rice

B. A.
Nash Hardware Co.

WALLS, W. O.

Burleson

Agri.

WOOD, THURMAN

Richland Springs

Gen. Elec.
West Texas Utility Co.
Abilene

ZAJIECK, JOSEPH

Holland

Part-Time Agri.
Village Creek Farm.

JUNIOR AGGIE 1920

Bert Acosta

*One-Time Holder of the
World's Sustained
Flight Record*



Clarence Chamberlain

*Acosta's Companion and
Co-pilot on this
Endurance Flight*

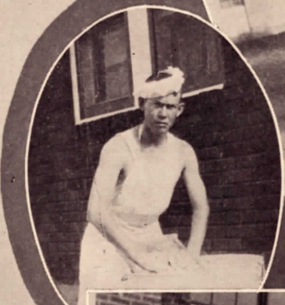
ACTIVITIES







FEATURES



Scenes from
"HERE AND THERE"
and
"When the Faculty
Sees Themselves as
Others See Them"





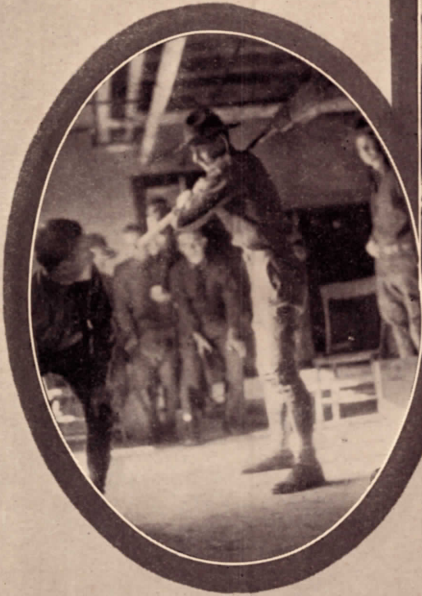
*High water on the pike.
'Member Murray's funeral.*



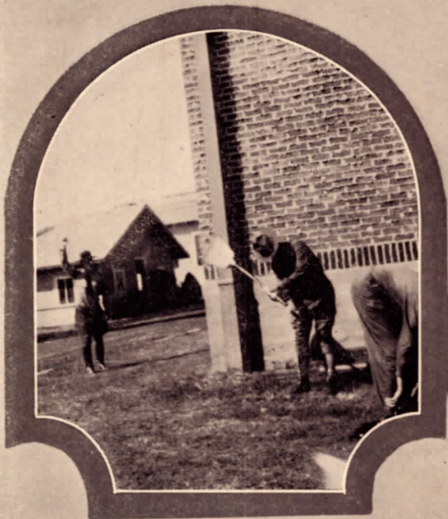


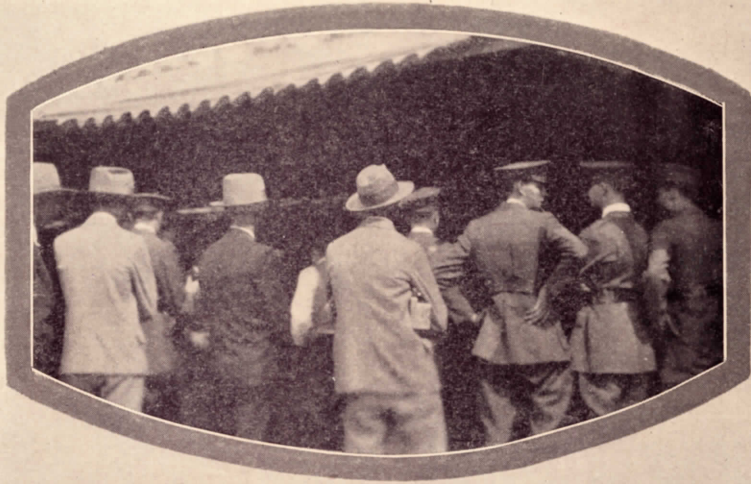
*That's the ole fight, gang!
All right, folks, here are Red
Moore and Three Point
Rumph.*



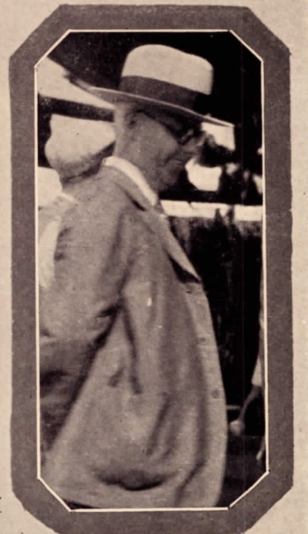


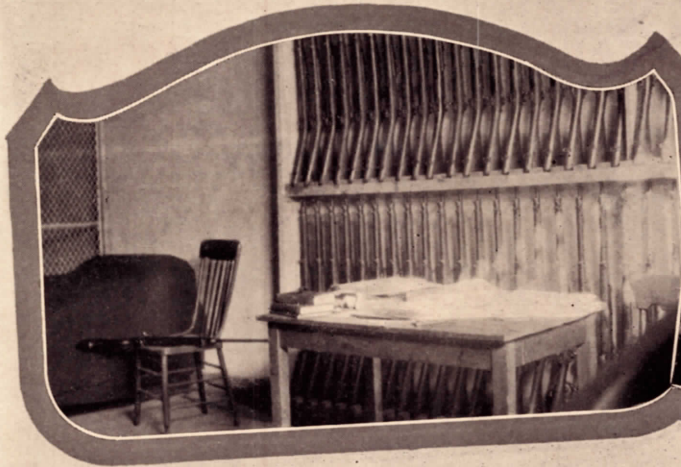
*When the Bull Pen Society
meets, it's "Dress up, Fresh-
men. But look out for Big
Breeches.*



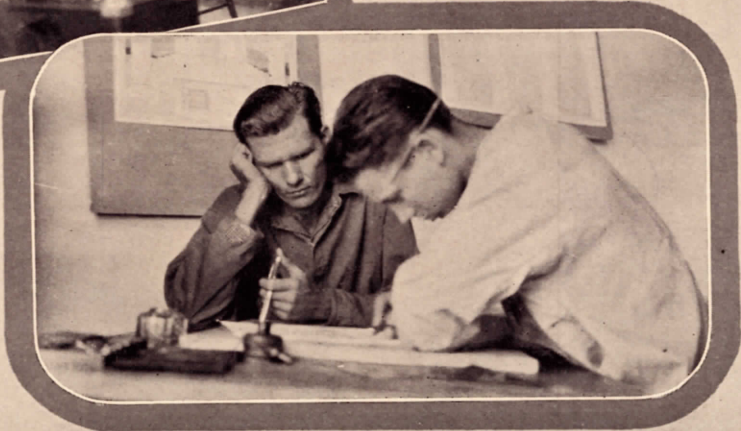


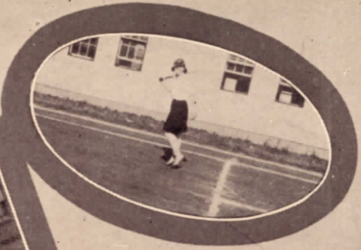
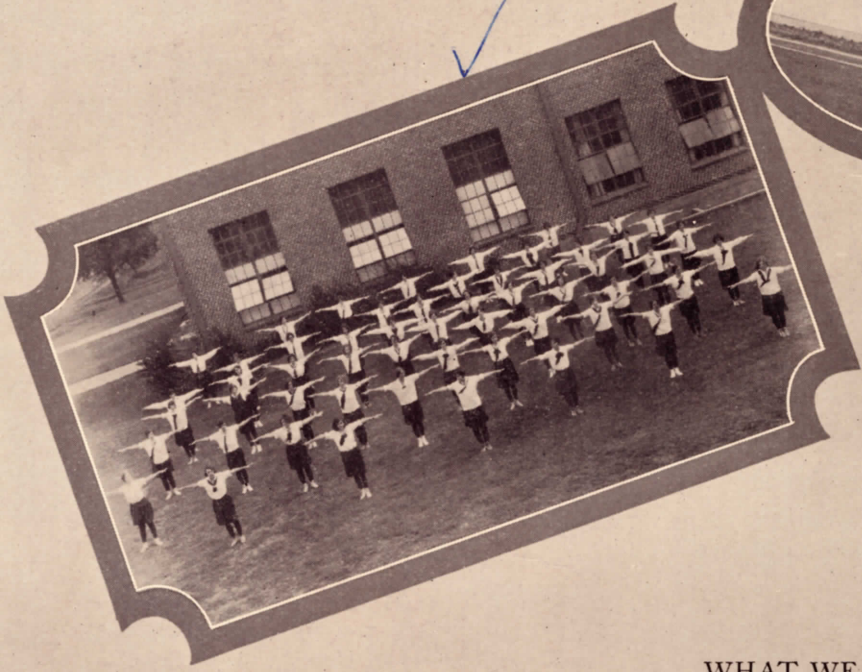
*We made whoopee at the
Texas State Fair. Even
J. T. saw the wild women!*



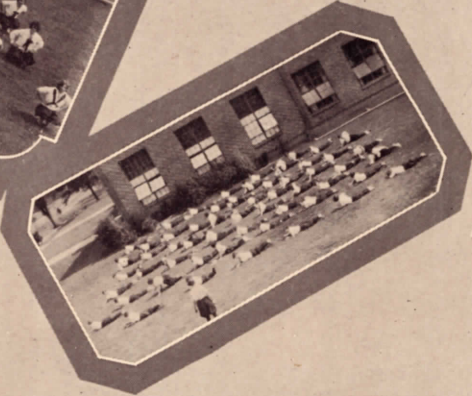
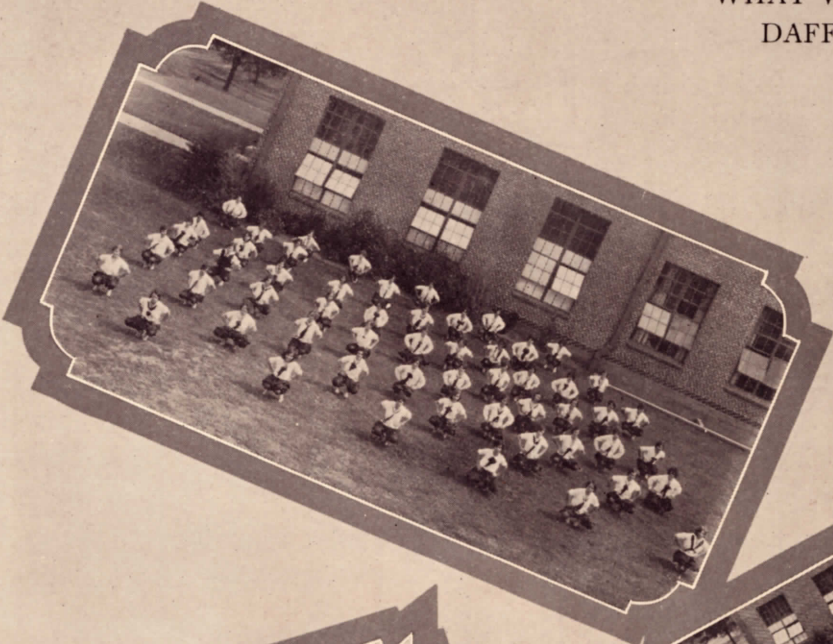


*The Government Supply Station.
Studying? Why, no.
Bigley and Schutts, architects de luxe.*





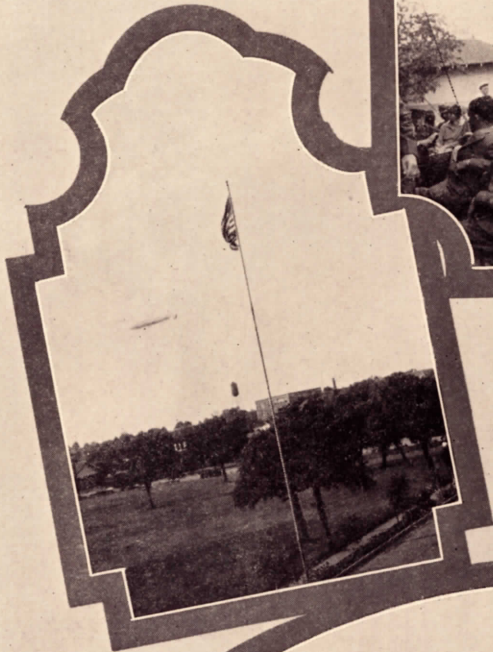
WHAT WE MEN GO
DAFFY OVER





Nature painted the Drill Field white, and Nurse painted the bruises red.





*The Los Angeles flies over N. T. A. C.
Armistice Day.
Co-Ops off and on.*





The annual staff hard at work—but you can't tell it by glancing through these pages.





Even girls do clever things.





*Where Everyone Knows
Everyone.*





AIN'T LOVE GRAND?



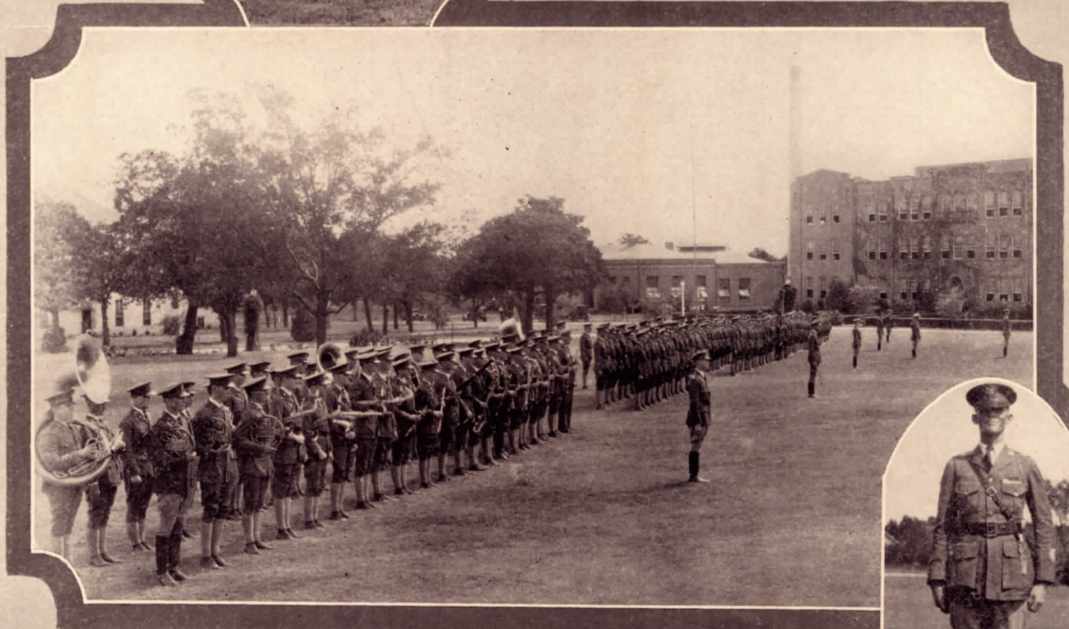


*Training to be husbands
and wives.*





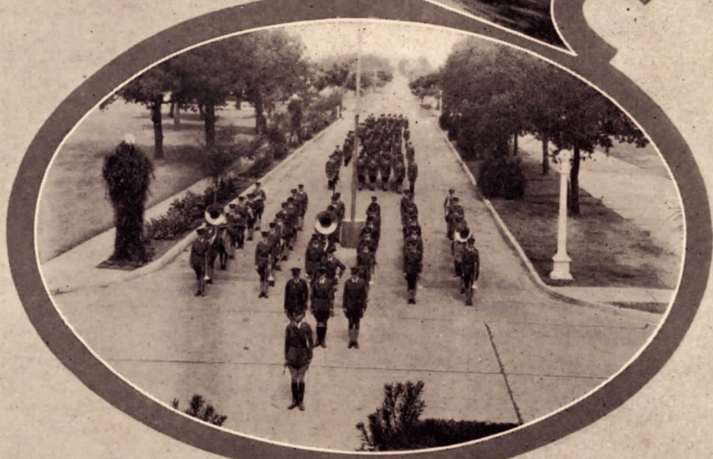
*Wake 'em up, Cooper,
And inspect 'em, Ford.*





YOU'RE IN THE ARMY NOW!



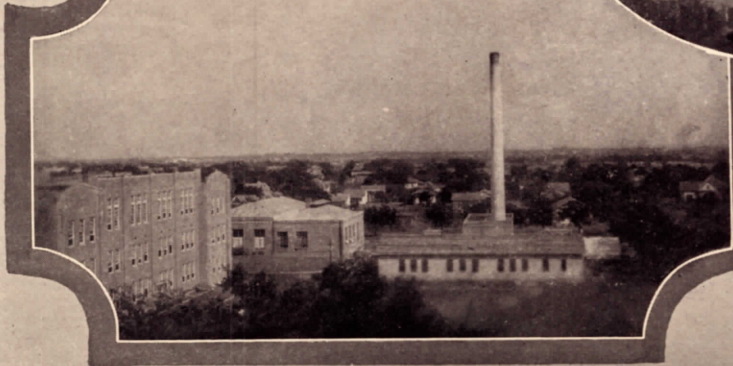
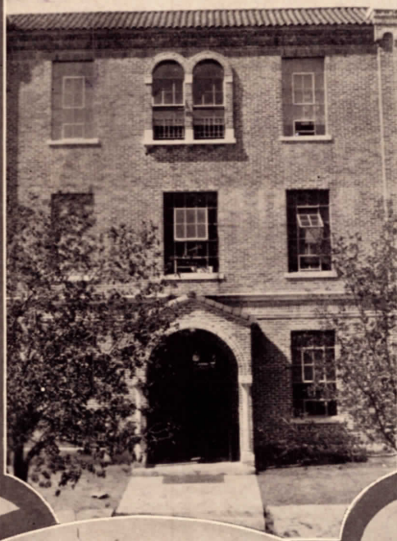


*My memory takes me
to—*





*Why is it that Swiss cheese
is so full of holes, when it's
Limberger that needs
ventilation?*





?



*Where there have been the
best of friends, there are dear
memories to be cherished.*





PUBLICATIONS



THE JUNIOR AGGIE STAFF

MISS EDITH HAMILTON
Club Editor
MR. W. L. WATSON
Sponsor to Business Manager
LT. BILL SCHUTTS
Art Editor
MISS MARTYE POINDEXTER
Art Sponsor
LT. ROBERT JACKSON
Athletic Editor
MISS JOY COLEY
Class Editor

MISS CHRISTINE FOWLER
Faculty Editor
MISS DORIS BROWN
Art Editor
LT. AUSTIN HARGREAVES
Feature Editor
SGT. JOE HOYLER
Assistant to Business Manager
MISS DORRIS WADE
Art Editor
MISS ANGIE DAHNKE
Art Editor



CAPT. GEORGE COLEY, *Editor*

When in the course of human events it becomes necessary to edit a college annual, be nonchalant and get a good staff.

—GEORGE.



THE JUNIOR AGGIE STAFF

MISS VIRGINIA ALVERSON
Assistant Editor

MISS ETHIE EAGLETON
Editorial Sponsor

CAPT. BILLY SWIFT
Military Editor

MR. MIKE DITTO
Assistant Business Manager

MISS DONNA MAE OWEN
Typist

MISS FANNIE MAE WILLIS
Associate Editor

MISS GENEVIEVE NEVILLE
Typist

LT. BILL COOPER
Music Editor

MISS PAULINE TUCKER
Class Editor

SGT. GORDON FOWLER
Athletic Editor

MISS FREIDA CHRISTMAN
Assistant Editor

MR. GEARSON HEASLEY
Assistant Business Manager

When trying to manage a college annual, observe the saying, "What a whale of difference a few cents make," and remember discounts are good to the last day. Don't worry about financial back set for "four out of five have it."

—BILL.



LT. BILL HUDSPETH, *Manager*



THE SHORTHORN

During the year 1928-29 the Shorthorn has been in charge of the following staff members:

MR. W. A. RANSOM, *Faculty Sponsor*
 MR. W. L. WATSON, *Faculty Business Manager*
 MR. DUNCAN ROBINSON, *Publications Council*
 STEVA ROSS WHITEHEAD, *Editor-in-Chief*
 L. G. MEIER, JR., *Business Manager*
 ROY PENDER, *Assistant Editor*
 TOM YARBROUGH, *Assistant Business Manager*

The following are reporters: Evelyn Collins, Bill Cooper, Gordon Fowler, Dorothy Greene, Edith Hamilton, Irvin Hemmle, Robert Horton, Joe Hoyler, Bill Hudspeth, Joe Hunt, Louise Nobles, Donna Mae Owen, Robert Peterson, Sidney Reeves, Violet Richardson, Homer Sheffield, Clyde Smith, Oliver Wilson.

The Shorthorn is North Texas Agricultural College's weekly publication. Its purposes are to print a record of the college events throughout the year, to inform the students of these events, to teach its reporters the principles of journalism, and to furnish entertainment to its readers.

Staff members are selected on their ability and willingness to write. All reporters having one hundred and fifty inches published during the year make letters. Gold pins are awarded to a representative number of reporters who have published the largest number of column-inches during the year.

Eric von Richtofen
Ace of war pilots.



MILITARY





CAPT. E. H. KELTNER, D. O. L., *Professor of Military Science and Tactics*

IN THE preparation of the American youth for their future duties and responsibilities as citizens of this great republic, there is, in the opinion of many representative citizens of our nation, no form of education more valuable than military training. This training represents the sublime experience of generations of teachers whose lives have been spent in the preparation of men of all types for a very exacting service. It has been scientifically evolved with a view to the co-ordinate development of physical stamina, mental poise and moral stability; and it is no disparagement of any of our systems of education to assert that there is no other which can confer greater benefits upon the youth just entering into manhood. It is not in any sense conducive to a warlike spirit, nor in any manner derogatory to the peaceful and democratic ideals of our country. Its aim is simply the production of a sound and strong body; a quick clear intellect with a full realization of and the disposition to discharge to the utmost, one's duty to his fellow man and to his country; subordination, without servility; pride, without arrogance; determination, without obstinacy; aggressiveness, but with the fullest appreciation and respect for the rights of others. In short, military training develops leadership, discipline, self-respect, self-control, a sound body—all attributes which make for success in any vocation that the cadet desires to follow.

—E. H. KELTNER.



LT. FRED B. NORRIS, *Commandant of Cadets*



HE PIONEER SPIRIT of the Reserve Officers' Training Corps in the North Texas Agricultural College materialized during the World War under the nomenclature of the Students' Army Training Corps; but the Reserve Officers Training Corps proper was not added to the curricula until 1921-'22, when the required one hundred students were enrolled. At that time Captain Carl A. Bishop (Major Bishop now) was the head of the Military Department in the College.

The pioneer spirit of R. O. T. C. was propitiated through four of its characteristics, namely:

The R. O. T. C. through its one-family organization motivates the intense support of the Cadet Corps for all the different factors in the institution, especially for the military and for athletics.

The democratic spirit rates above par because all students are uniformed in all of their activities especially as to clothing, rooming, boarding, and regulations.

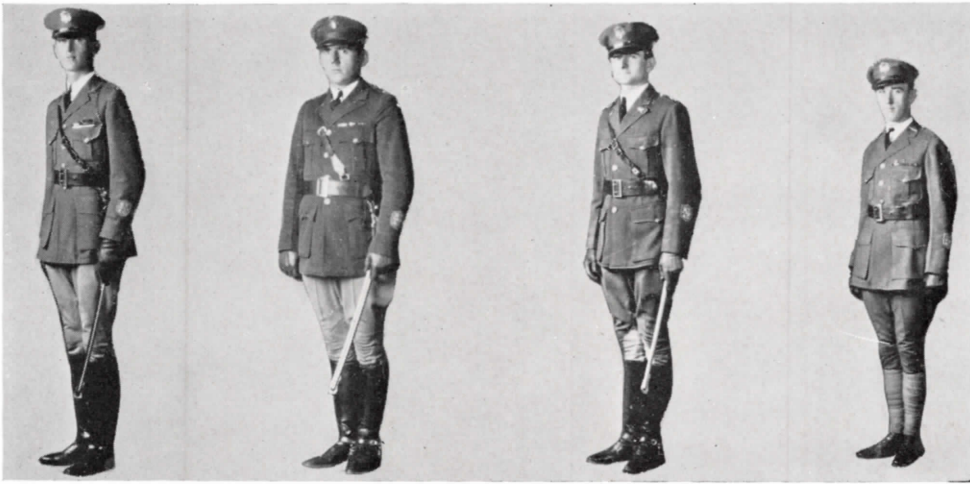
The discipline embodies voluntary co-operation from the highest ranking officer to the rawest recruits among the enlisted men. This co-operation is visualized not only in the old men but also in the men after a fortnight's stay in the R. O. T. C.

This spirit of the R. O. T. C. builds the cadet into a more useful citizen through instilling in him the respect not only for authority but also for the rights of other citizens.

In short, the spirit of R. O. T. C. has moulded and refined the enviable traits of character through its help in preparing the cadet for a more intelligent citizenship.

Respectfully,

FRED B. NORRIS,
Commandant of Cadets.



Maj. Hollis Ford

Adj. Delbert Polley

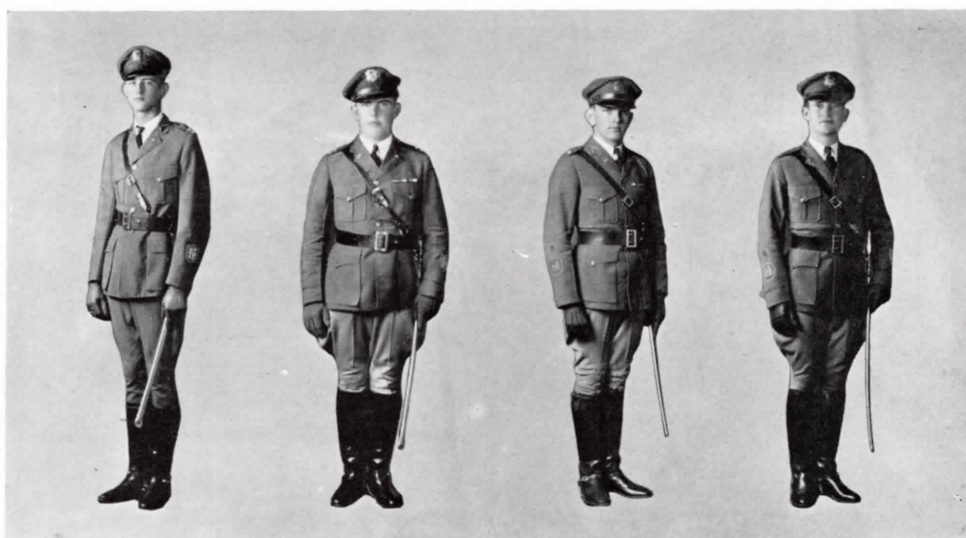
1st Lt. Austin Hargrave

Color Sgt. Walter Payne

THE STAFF



THE STAFF is made up of those who have duties which take more time than they could devote were they assigned to companies. The major, of course, is commander of the batallion; Lt. Hargrave is quartermaster, and runs the armory. Until mid-year Lt. Polley was adjutant. At his withdrawal Lt. Seale was appointed adjutant. At the first of the year Walter Payne was the color sergeant, but his duties have since been lightened by Sidney Reeves as color sergeant.

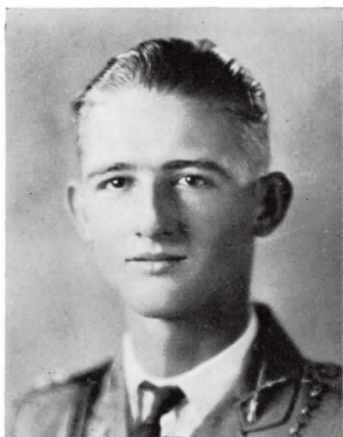


1st. Lt. Jesse Fry 1st Lt. Joe Hood 2nd Lt. Homer Sheffield 2nd Lt. Newman Casey

COMPANY A

IT HAS been the tradition in N. T. A. C. that Company A is first in regard to military leaders and to performances. The tradition is still existing this year with Captain Billy Swift commanding the unit. Captain Swift is an efficient military instructor and has always been a good cadet in the R. O. T. C. training. Swift was put in command of the battalion and remained in that position during the last three months of this year. Captain Swift has been twice elected the most military man in the battalion, and his ability as a military leader makes him well deserve that honor. At the present time the organization does not have a First Lieutenant. Second Lt. Casey and Second Lt. Maxey are second in command.

Dean Murray has the honor of being the First Sergeant of the Company. Sgt. Murray worked diligently and earnestly in this position and rendered excellent service to the company. Murray has always realized his duty to the company and fulfilled his duty to the best of his military ability. As the boys would remark, "He is good, but hard boiled."



1ST LT. JESSE FRY

The personnel is the largest in the battalion. To possess the largest personnel has been characteristic of Company A for yaers. Company A is a campus organization and it is housed in the noted Lindbergh Hall. The company's personnel is just what the name of the hall suggests. The name Lindbergh suggests superiority and efficiency and success. Company A has exhibited superior performances and efficient performances and has always been successful in contest with other companies in the battalion. All the cadets in Company A have worked diligently to support their company leader and deserve mention as being a harmonious working group of courtly young men.



Roster Company A

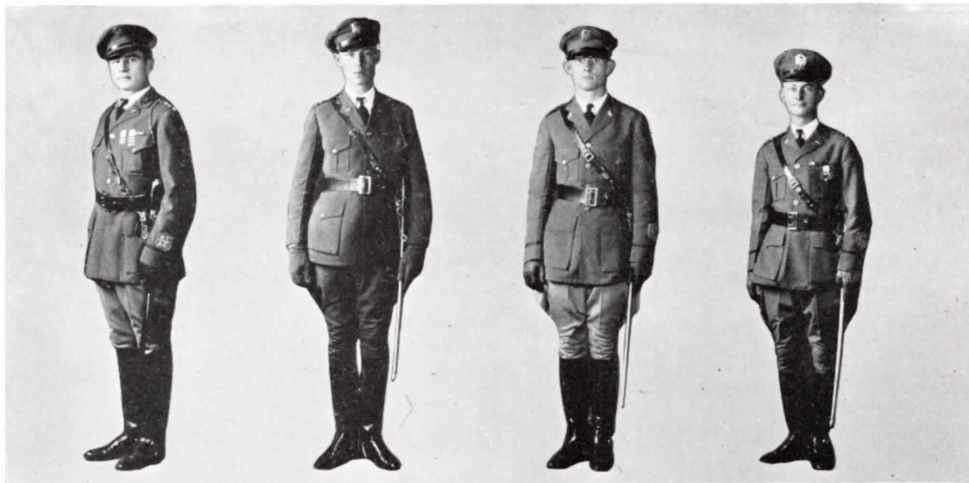
JESSE FRY	1st Lieutenant
JOE HOOD	1st Lieutenant
NEWMAN CASEY	2nd Lieutenant
HOMER SHEFFIELD	2nd Lieutenant
DEAN MURRAY	1st Sergeant

Bain, Volney C.
 Bowers, Richard
 Bullock, Marcel
 Caperton, R. B.
 Christopher, M. C.
 Cotter, Obie T.
 Evans, Doyle
 Fitz, Delmar
 Hall, Quince S.
 Hester, Hiram P.
 Hodge, Walter
 Holliday, William
 Holmes, A. J.
 Hoyler, Joe
 Hunt, Joe
 Hurley, Carey

Kaczmarek, Louis
 Lennen, Leslie
 Little, Jack
 Nance, Truman
 Neece, J. A.
 Newton, C.
 Pass, Lamar
 Rock, J. H.
 Simms, W. L.
 Stedham, O. R.
 Swain, Buford
 Talbott, W.
 Todd, H. O.
 Weller, N.
 Wiseman, J. W.
 Wilson, D. F.



1ST SGT. DEAN MURRAY



Capt. Robert Peterson 1st Lt. Lewis Wiggins 2nd Lt. Robert Jackson 2nd Lt. Madison Beaty

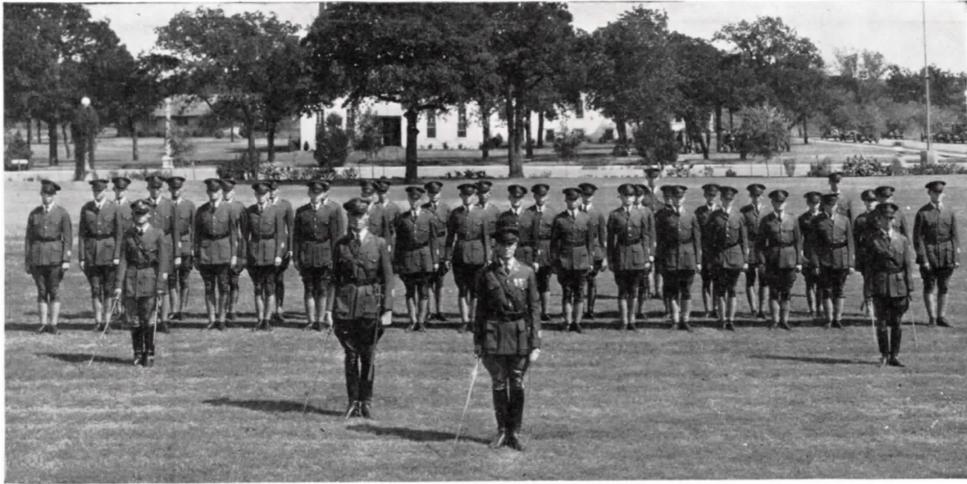
COMPANY B



OMPANY B has succeeded in maintaining her past record of efficient drillers and excellent disciplinarians. Moving from Lindberg Hall to Fish Hall seems to add to rather than detract from, her ability on the drill field. Captain Peterson had three years of experience in the regular army before he became the commanding officer of Company B. He was stationed at Schoefield Barracks, Island of Oahu, Hawaii. It was there that he learned the principle of military snap and precision, which he has succeeded so admirably in instilling into the members of Company B. First Lieutenant L. C. Wiggins is second in command with four years of previous R. O. T. C. training. Second Lieutenants Madison Beaty and Robert Jackson have been diligent instructors throughout the year. First Sergeant Edward Maxey was promoted to Second Lieutenant and transferred to Company A. First Sergeant J. W. Taylor has proven worthy of the trust put in him. The upper-classmen, members of Company B last year, formed an excellent nucleus upon which to develop a skillful company. The men have worked hard all year, and the results are gratifying. The experience which the members of Company B have received during the past year will be both profitable and helpful in later years. It has taught them to depend upon themselves and obedience to orders which is essential also to a successful business career.



CAPT. ROBERT PETERSON



Roster Company B

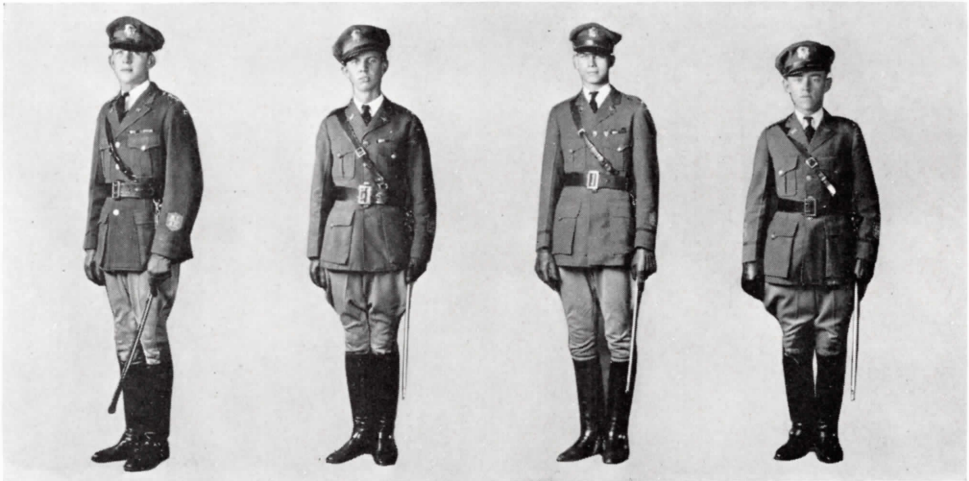
ROBERT PETERSON	<i>Captain</i>
LEVIS WIGGINS	<i>1st Lieutenant</i>
ROBERT JACKSON	<i>2nd Lieutenant</i>
MADISON BEATY	<i>2nd Lieutenant</i>
EDWARD MAXEY	<i>1st Sergeant</i>

Ballinger, Pope
 Batson, Earl
 Cearley, John
 Collins, Tom L.
 Condron, C. B.
 Fagg, Noel
 Faith, Douglas
 Fry, Hershhal
 Gentry, Elbert
 Gravley, Perry T.
 Hayden, W. C.
 Hunt, Julian
 Maag, Orville
 Mason, J. I.
 Meier, L. G.
 Miles, Bertram E.
 Payne, Cecil

Pearce, Jesse O.
 Pearson, Robt.
 Ratliff, Lemuel
 Reeves, S. S.
 Roberts, Jas. C.
 Robinson, Henry H.
 Robison, W. W.
 Russell, E. K.
 Smith, S. Leslie
 Spence, J. P.
 Stanley, Frank
 Taylor, J. W.
 Troutt, Dallas
 Weaver, R. L.
 Wood, Wm. B.
 Yarbrough, T. B.



1ST SGT. EDWARD MAXEY



Capt. Billy Swift

1st Lt. G. A. Ford

2nd Lt. Wm. Schutts

2nd Lt. Robert Wheeler

COMPANY C



COMPANY C is made up of cadets of Tarrant County some of which live on the campus and some of which live off the campus. This company is composed of boys who try hard and who have succeeded in making an excellent showing for the past year. In the various competitions C. Company has shown its supremacy as it has come out on top. This goes to prove that the men of C. Company are well trained, disciplined soldiers.

Captain Billy Swift was Company commander at the beginning of the year, but he was transferred to Company A at mid-term. First Lieutenant G. A. Ford was placed in command of the company and continued in command throughout the year. Lieutenant Ford was a very efficient officer and drill instructor. He was First Lieutenant, second in command of the company under Captain Swift. The accomplishments and success of Company C were due to the efficiency and ability of these officers and their assistants in giving instructions.



CAPT. BILLY SWIFT

C Company, though it is made up of some off campus students, is well represented in all forms of school activities, scholastic as well as athletic.

C Company still contends that it is first in regard to leaders and performances. Captain Billy Swift, commanding officer of the company, but transferred to Company A at mid-term, was replaced by First Lieutenant G. A. Ford, both being very efficient officers. Second Lieutenants Bill Schutts and Robert Wheeler also are very efficient in scholastic duties as well as military duties. The honor of being First Sergeant belongs to L. T. Nowlain.

The members of C Company are very proud of the record they have made. They hope the future Company C's will take this company as an ideal and strive to accomplish as much in time to come as Company C has accomplished in 1928-'29.



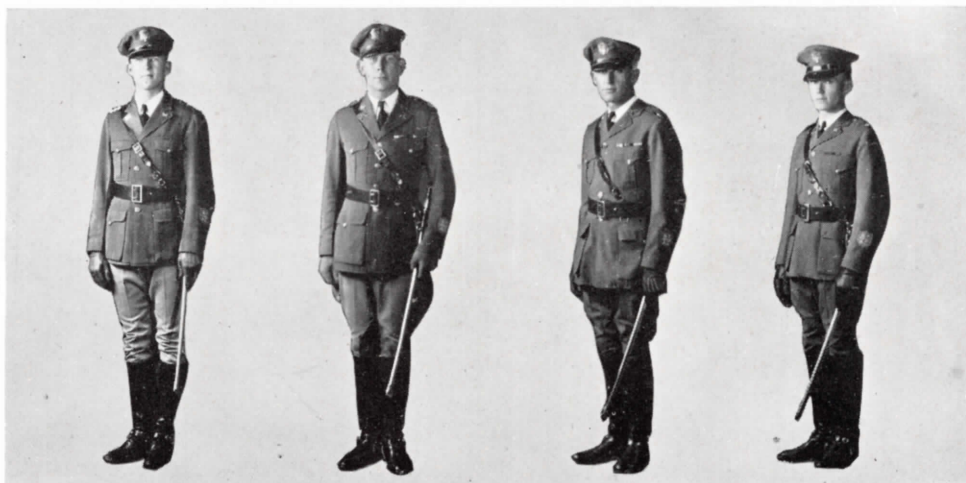
Roster Company C

BILLY SWIFT	<i>Captain</i>
G. A. FORD	<i>1st Lieutenant</i>
WM. SCHUTTS	<i>2nd Lieutenant</i>
ROBERT WHEELER	<i>2nd Lieutenant</i>
L. T. NOWLAIN	<i>1st Sergeant</i>

- | | |
|--------------------|-------------------------|
| Baker, John | Josey, John |
| Brower, Weldon | Lipscomb, V. F. |
| Chauncey, Jas. | Malaise, George E. |
| Crain, John | Miller, Claude |
| Dugan, Tom | Norman, Noble |
| Dunsworth, Taft | Owens, A. C. |
| Felder, Harvey | Patterson, Comer |
| Ferguson, Murray | Pike, Oliver |
| Freeman, Rex | Pringle, Cordell |
| Griffin, George G. | Ray, Ernest |
| Hatter, Joe Ray | Reeder, Yheran |
| Haesley, Gerson | Stephenson, Robt. |
| Harbin, Karl | Story, H. Joe |
| Heard, W. T. | Wells, J. I. |
| Hughes, John L. | Youngblood, John Weldon |



1ST. SGT. L. T. NOWLAIN



Capt. George Coley 1st Lt. Tom Seale 2nd Lt. V. K. Brandenburg 2nd Lt. Clyde Smith

COMPANY D



OMPANY D is better known as the Dallas Company. It is captained by George Coley of Dallas. This is the first year that the cadet corps has had a company composed of only Dallas boys. The company contains seven members of the college rifle team. It has been judged the best drilled company at one "retreat parade." The members of the company form a lively group and have given many dances and outings to bring the cadets and their friends into a strong bond of fellowship.

The Dallas Company has been fortunate in that it has had plenty of able instructors. The members of Company D have been well instructed through the unselfish efforts of First Lieutenant V. K. Brandenburg who is the executive officer of the company, Second Lieutenant E. H. Brummett and second Lieutenant C. B. Smith. These officers have helped create a well-polished drill machine out of a group of practically raw recruits.

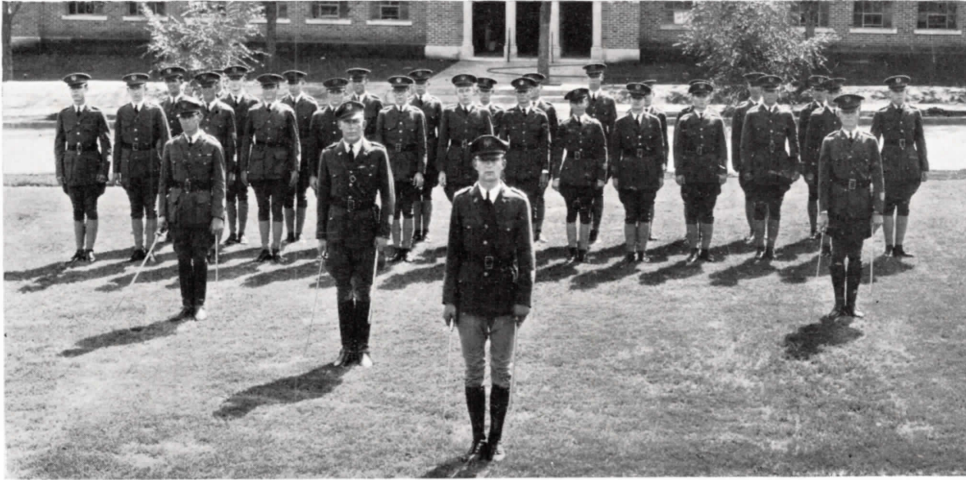


CAPT. GEORGE COLEY

The Dallas Company is to be commended for its rapid advancement. At the beginning of the fall term Company D lacked sufficient non-commissioned officers to fill all the vacancies, but within a few weeks these vacancies were filled by capable men who helped materially in the rapid advancement of the company.

The Dallas Company has been fortunate in being led by Captain Coley. Having had several years of military training, Captain Coley is well versed in the arts of military tactics. He has therefore been a very efficient commander.

Although Company D is a new company it has been foremost at all times in backing the cadet corps and the student body in putting over the many activities of the year. The Dallas Company is expected to be much larger next year due to the increasing number of day students in the college.



Roster Company D

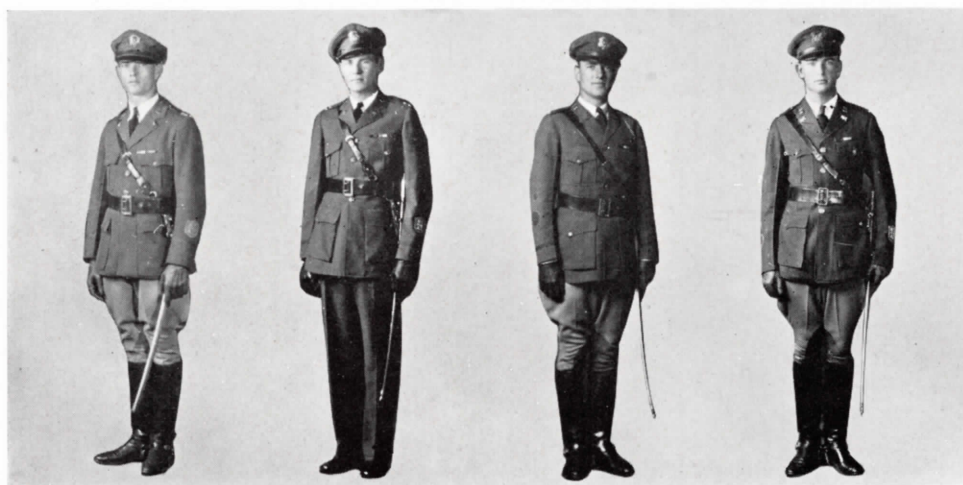
GEORGE COLEY *Captain*
 TOMMIE SEALE *1st Lieutenant*
 CLYDE SMITH *2nd Lieutenant*
 V. K. BRANDENBURG *2nd Lieutenant*
 E. H. BRUMMETT *1st Sergeant*

Bellamy, Jesse
 Bock, S. D.
 Cely, D. P.
 Cely, J. C.
 Cockrell, Hoyt
 Connor, Thomas
 Cruce, Carroll
 Hagedorn, Herman
 Hall, Howard
 Harlan, W. J.
 Howard, T. Dow
 Howard, W. J.
 Illingworth, Ronald
 Johnson, Hayden
 Jones, David
 Liddell, Wm.

Marks, Emory M.
 McMains, D. M.
 McCool, L. H.
 McMurray, Chas. E.
 Moncrief, James M.
 Payne, W. H.
 Peck, Paul
 Pender, Roy
 Rouse, W. T.
 Smith, J. D.
 Sockwell, Edgar
 Stuart, J.
 Tims, Raymond
 White, James H.
 Yeargan, Chas. A.
 Turner, Wallace



1ST. SGT. E. H. BRUMMETT



Capt. John Creecy 1st Lt. Leroy Bigley 2nd Lt. Bill Hudspeth 2nd Lt. Bill Cooper

The North Texas Aggie Band



HE NORTH TEXAS AGGIE BAND at the beginning of the year gave promise of being the best that has been produced at the North Texas Agricultural College, and it has slowly but surely fulfilled that promise. With nearly fifty musicians under his command "Col." Irons, one of the best band directors in the state, has succeeded in producing one of the best Junior College Bands in the state. The Aggie Band made several trips over the state during the school year and it was favorably received wherever it appeared. "Col." Irons entered the band in that contest sponsored by John Philip Sousa in Fort Worth; but through a prearrangement, the cup went to a high school band.



CAPT. JOHN E. CREECY

The Band was honored by an invitation to perform at the inauguration of Governor Dan Moody. The House of Representatives complimented it highly in its resolution adopted welcoming the band to Austin. Trips have been made during the winter and early spring, the most notable of these being a trip to the Fat Stock Show at Fort Worth. The Aggie musicians played to appreciative audiences at the Stock Show and made a big hit with the fair onlookers. The biggest trip of the year was made in the early part of May when the band competed in the West Texas Band Contest at El Paso, where it made a very creditable showing.



Band Roster

JOHN E. CREECY *Captain*
 LEROY BIGLEY *1st Lieutenant*
 BILL COOPER *2nd Lieutenant*
 BILL HUDSPETH *2nd Lieutenant*
 CARL E. SESSIONS *1st Sergeant*

Ball, Claude
 Baxter, Robt. L.
 Braboy, J. R.
 Bragg, Mansell
 Brown, Albert
 Bryan, Hubert L.
 Bullock, Maurice
 Chaudoin, Ottice
 Conlee, Wm.
 Covington, H.
 Ditto, Mike
 Ferguson, J. Frank
 Fisk, Wm. F.
 Franks, Guy R.
 Fowler, Gordon R.
 Fox, Jeff
 Godfrey, G. A.
 Gregory, Coston L.
 Hemmle, Irvin

Herndon, Gilbert Cole
 Hester, Ira
 Hollingsworth, D. C.
 Horton, Robt. E.
 Hulsey, W. C.
 Mansell, Paul
 Odom, Jas. A.
 Odom, Robert M.
 Scott, George C.
 Sessions, Clyde
 Smith, Garland
 Smith, L. P.
 Smith, Wm. S.
 Talkington, Arthur L.
 Taylor, Howard
 Underwood, C. W.
 Wadzcek, Mark
 Woods, W. Tyson
 Wheat, Harry H.

Williams, L. D.
 Wilson, Oliver
 Wilson, Woodrow



1ST SGT. CARL E. SESSIONS



RIFLE TEAM



TO DATE the 1928-29 rifle team has only fired one match, the Eighth Corps Area Intercollegiate Match. The results of the match have not yet been announced. Our team made 7234 points out of a possible 8000. The team has yet to fire the William Randolph Hearst match and individual matches with Texas A. & M., Colorado School of Mines, Oklahoma A. & M., and Allen Academy. The team looks forward with enthusiasm and optimism to the firing of these matches. Captain Keltner has stirred up more interest this year in the rifle team than has ever been exhibited before. The team consists of Maxey, Stuart, McMains, Schutts, Hargrave, Coley, Pike, Nowlain, Wheeler, Howard, Conner, Weller, Payne, and Pender; coached by Captain E. H. Keltner.

Amelia Earhart
Trans-Atlantic flyer



FAVORITES



CAPTAIN BILLY SWIFT

Most Military Man

MISS DOROTHY McNAIR

Most Beautiful Girl

CAPTAIN J. E. CREECY

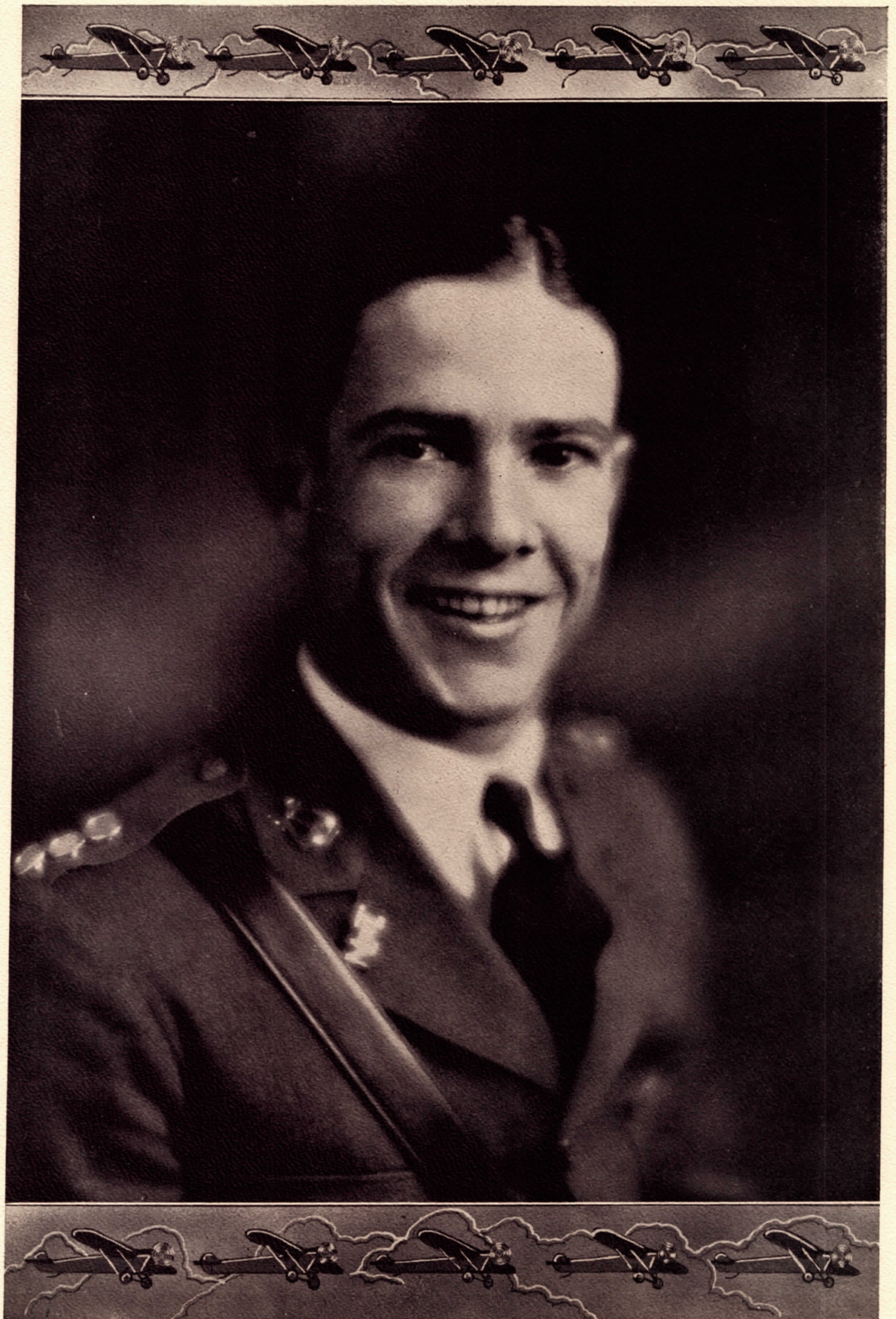
Most Versatile Man

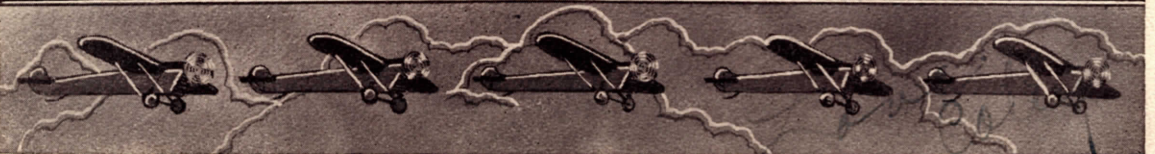
MISS JOY COLEY

Most Versatile Girl









Gay



The election of the favorites at the college was planned in a way to prevent the trickery and petty canvassing so characteristic of this sort of thing. Each student was given a ballot at an assembly period and allowed to write on it his own choice of favorites. The election was carried on without previous notice; thus the results were unpremeditated and thoroughly representative.



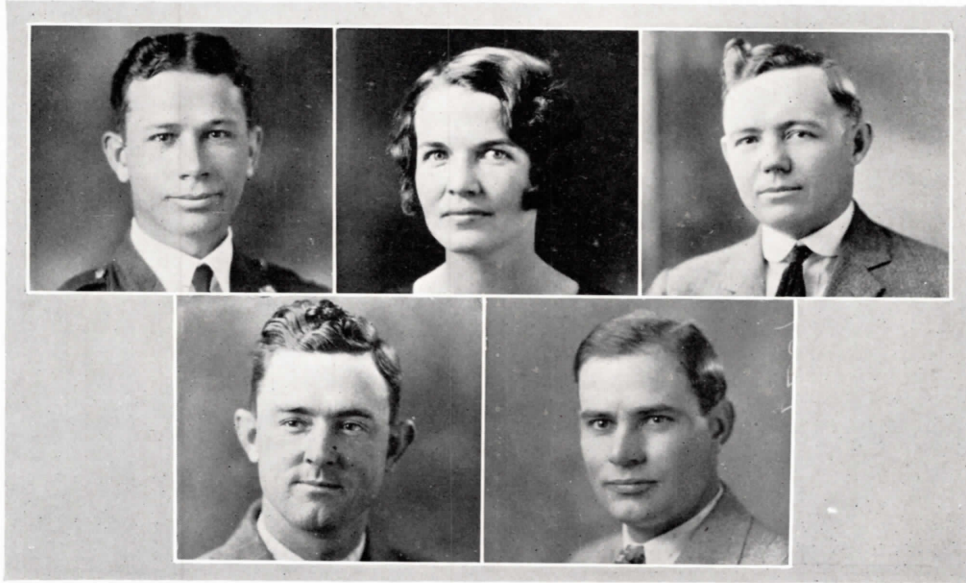
Roald Amundsen

Norwegian explorer and discoverer of the South Pole.



ATHLETICS





FRED B. NORRIS
Tennis

MRS. W. L. HUGHES
*Director of Women's
Athletics*

C. P. RUMPH
Track

J. C. MOORE
*Director of Men's
Athletics*

H. A. D. DUNSWORTH
Assistant Coach

THE COACHES



HE CREDITABLE showing made during the year 1928-'29 by the HORNETS was in no small part due to the guidance and direction of the mentors. Capt. Fred B. Norris produced a net team which offered formidable competition to their opponents. Mrs. W. L. Hughes aroused a great deal of interest in women's athletics with her point-system of lettering and made a live organization out of the college's branch of the Women's Athletic Association. North Texas Agricultural College has a lot to thank Mr. C. P. Rumph for as his track team hung up two records for the rest of the conference to shoot at. Coach "Red" Moore, football mentor, with a limited amount of material whipped into form a team which honorably bore the Blue and White for a season. His basketball quintet brought the conference title to North Texas Agricultural College. The versatile Mr. Dunsworth has been the able henchman of the coaches in all branches of athletics.



MISS MYRTLE RAWLES

J. T. SUMMERHILL

W. L. HUGHES

J. B. PRESTON

J. C. STAGNER

THE ATHLETIC COMMITTEE



THE ATHLETIC COMMITTEE acts on the affairs pertaining to the physical activities of the college. Its members are appointed by the Dean with due regard to the demands. This body arranges the calendar of competition in all sports so as not to interfere with the other functions of student activities. The making of awards and the giving of letters is sponsored by the Athletic Committee. Most of its members were previous participants in some form of athletics, and all of them are vitally interested in the physical betterment of the students. This committee is made up of faculty members, and it makes such recommendations as it deems needful to the Executive Committee. The college is officially represented in the State Junior College Conference by this body.

Helma, this is the end of the third year
and in all seriousness I want to tell you
that these three years I have certainly
enjoyed your friendship. I wish you
and Jack every success.



FOOTBALL



SQUAD

Review of the 1928 Football Season

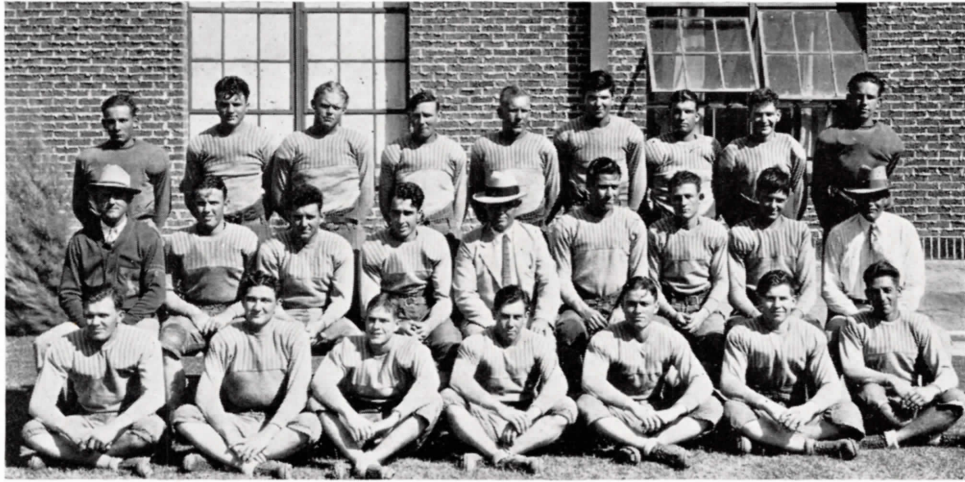
WHEN Coach Moore put his charges through their first workout at Lake Worth September 10, prospects were none too bright. Only five letter men—Maxey, Polley, Creecy, Spence, and Seale—were back from the '27 team. In addition to these five, there were four reserves back, Taylor, Weller, Murray, and Hood. In spite of the lack of veteran talent, Coach Moore and his assistants managed to whip together a very formidable lineup. An abundance of new material proved very valuable to the team. Faith, Connelley, Johnson, Swain, Cearley, Peck, Gravely, and Dunsworth did much to strengthen the squad. After bowing before Terrell Prep in a practice session, the Hornets started the season with a bang by defeating the Texas Military College 12 to 6. They continued the good work by taking the Clifton College eleven into camp by a score of 32 to 0. The



CAPT. POLLEY

Captain Polley

Polley and Creecy served together as captains of the 1928 Football team. Polley was a great leader and fighter, and was one of the most popular members on the team. Polley was serving his third and last year on the team as a back-field man. Polley was a great line plunger and pass receiver. He could always be depended upon when he served to back up the line.



FIRST TEAM

next game told a different story, when the Aggies dropped their annual encounter with the Wesley Panthers. The Hornets took the other game of the current road trip when they beat the Hillsboro Indians by a margin of two points. N. T. A. C. broke its string of road games with a game at home, having as opponents the Tribe from Wichita Falls. No war-whoops were heard from the Indians as they left Aggieland. After this game, the Hornets took to the trail for a couple of games. At Paris, the championship of the conference was wrested from our gallant knights of the gridiron by the well-known Dragons. Next, taking the longest trip of the season, the Hornets were defeated by Blinn Memorial College. The Aggies won the last game of their Junior College competition by defeating the Gainesville Indians. They ended the season by defeating the North Texas Teachers College Reserves, this game being played in the place of the one forfeited by Ranger. Throughout the season, the Hornets seemed only to find their power when they played on the local field. Including all games the Hornets finished the season with a percentage of .700.

Captain Creecy

Creecy played on end and practically every position in the backfield. Wherever he played he always gave a good account of himself. Creecy was one of the best ground gainers on the squad. As a punter there was none in the conference who could beat him. Creecy's toe kept the "Aggie" goal line out of danger many times during the year. Creecy served his last year, and will be missed next year.



CAPT. CREECY



"HORNETS! THAT'S OUR NAME"



Hood played a consistent game on the wing position all year. Very few plays were ever run around his side of the line. Hood was exceptionally good at receiving passes. Hood will be missed from the squad next year.

"Boody," serving his first year on the squad, made a great little end. Johnson broke up many of the opponent's plays, especially their passes. "Boody" was a fast man and a hard worker.

"Ox" was one of the best tackles in the conference this year. Tommy was a stone wall in the line. He could always be depended on to hold his opponents and to open up for his own backs. "Ox" will be absent when the roll is called next year.

"The Fighting Jew" was a new member to the team but he showed up like a veteran. Peck, playing tackle, stopped many a rally staged by the opponents, often times breaking through to smear a play before it had really begun.



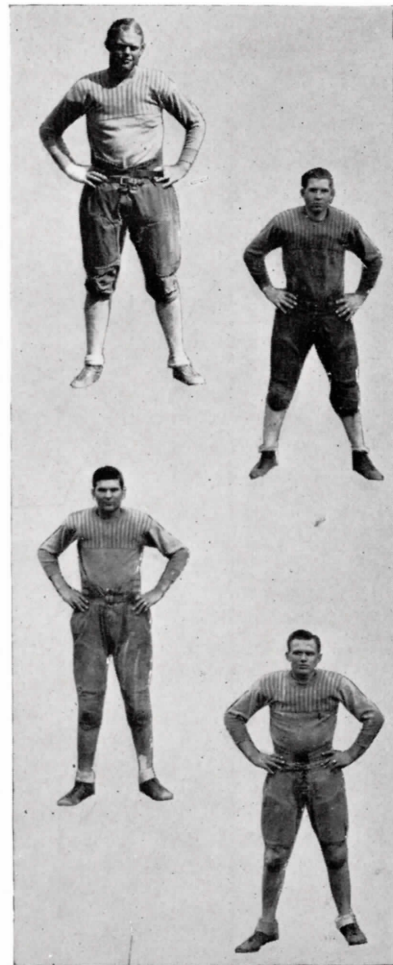
"HIT 'EM LOW"

Weller, serving his first year as a regular, gave a good account of himself all season. Weller was a great fighter and hard worker. Much is to be expected of Weller next year when he will be with the team as one of the Captains.

Gravely was a new man, a hard worker and fighter. Gravely was often seen at one of the tackle positions where he always gave a good account of himself. Gravely was a tower of strength in the line.

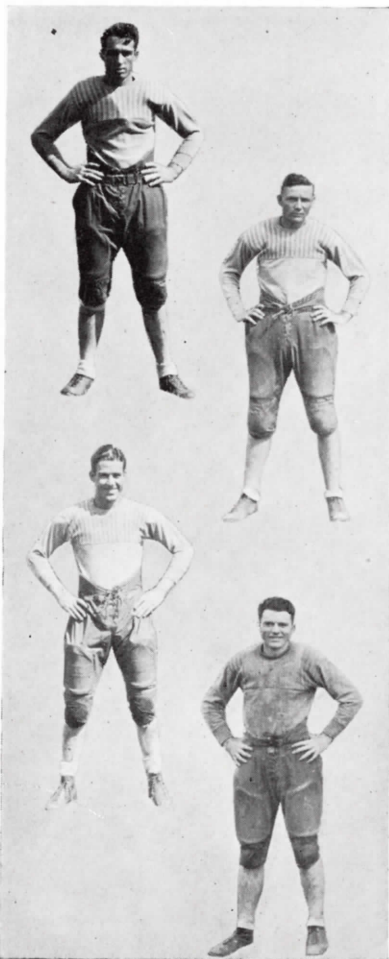
Murray served at either tackle or guard where he could always be seen giving all that he had. Murray often broke through the enemy line to smear plays that were launched at him. On the offense Murray was one of the best the Hornets had.

Swaim was rather a small man to play the guard position, but he always managed to make the opponents think that he was a good size man. Swaim had that "Old Aggie Fight," and demonstrated it well on the field.





"GIVE 'EM H——, LET'S GO"

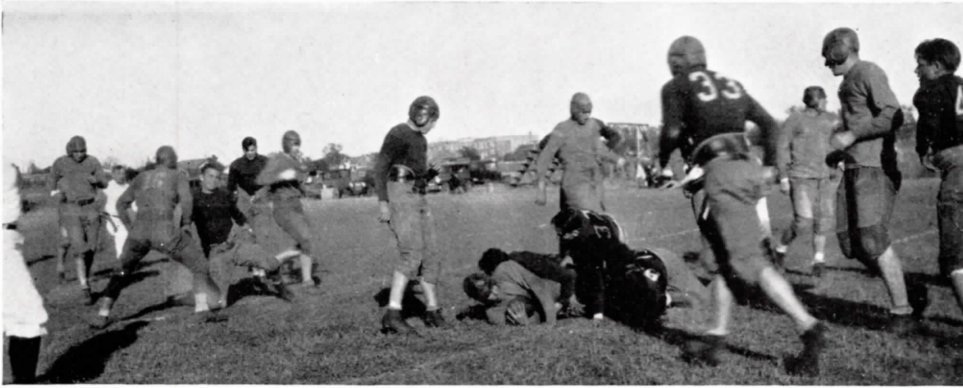


Spence was one of the mainstays of the team. When it came to backing up the line there was none better. Spence played a brilliant game at center all season. This was Pratt's third and last year on the Hornet football squad.

Taft alternated with Spence at the center position. Dunsworth was a hard worker and fighter. This was Dunsworth's first year on the squad, but, while in the game, he added much strength to the team.

Maxey's great strength lay in his off tackle plunges. Maxey was the most consistent ground gainer on the team. As a safety man Maxey returned many kicks for good gains. Maxey played his second and last year on the team.

Faith was always ready with his line plunging. When he hit that line he always hit it for a gain. Faith was also a wonderful kicker, he shared the kicking with Creecy. Faith will make a great leader for the '29 team.



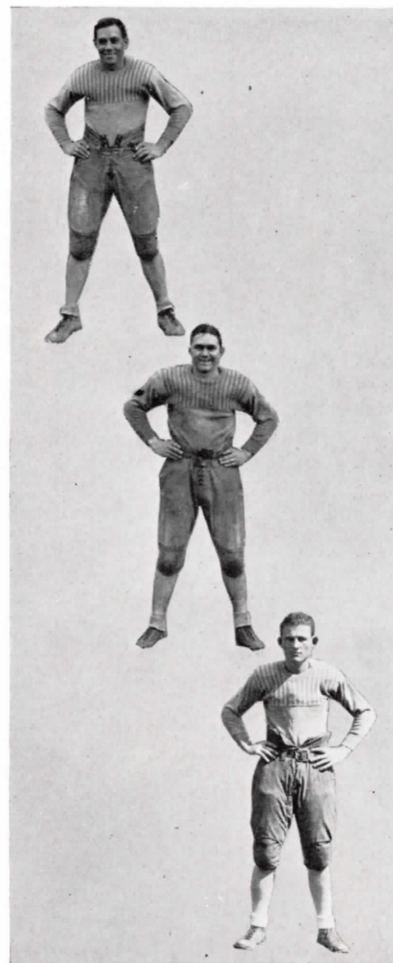
"HOLD 'EM, HORNETS"

Taylor played a good brand of football all season. He was exceptionally good in breaking off tackle and running around end. Taylor was a small man but a great fighter, he never quit. He will be missed next year.

Bowers was a little man who got a late start, but developed fast. Bowers was undoubtedly the fastest man on the squad. Bowers showed his heels to all opponents when he broke off tackle for neat gains.

Jackson, the stellar quarter of last year, was a great aid to Coach Moore in developing the raw material on the team. In non-conference games, he showed himself to still be the heady field general that he was last year.

Raymond Tims, Newman Casey, Mayo Odom and William Robinson were the reserve men of the squad.

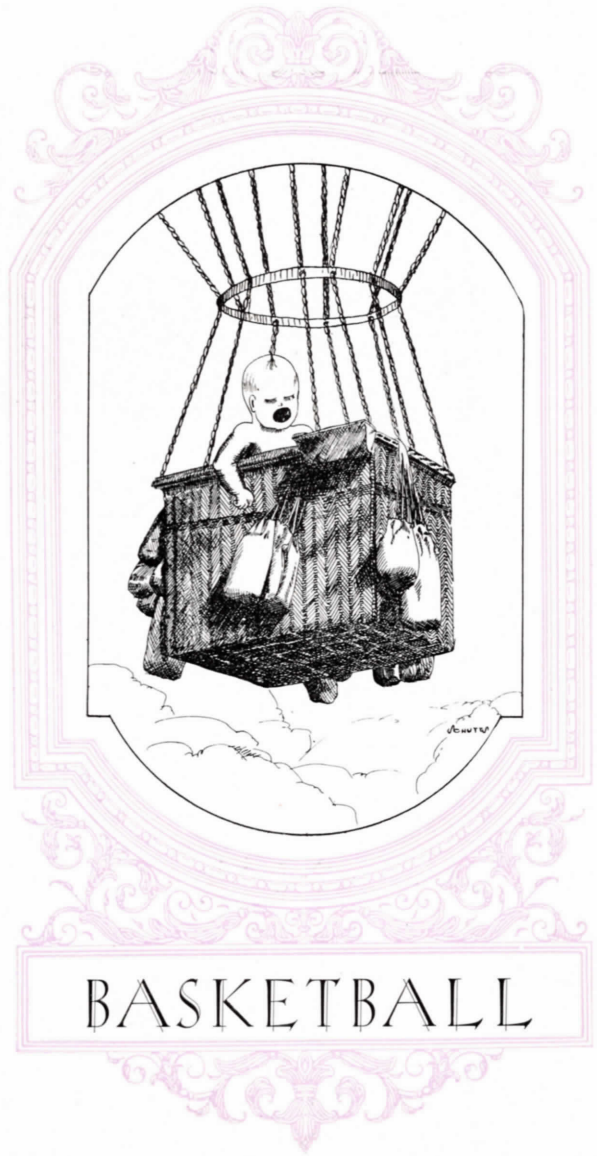




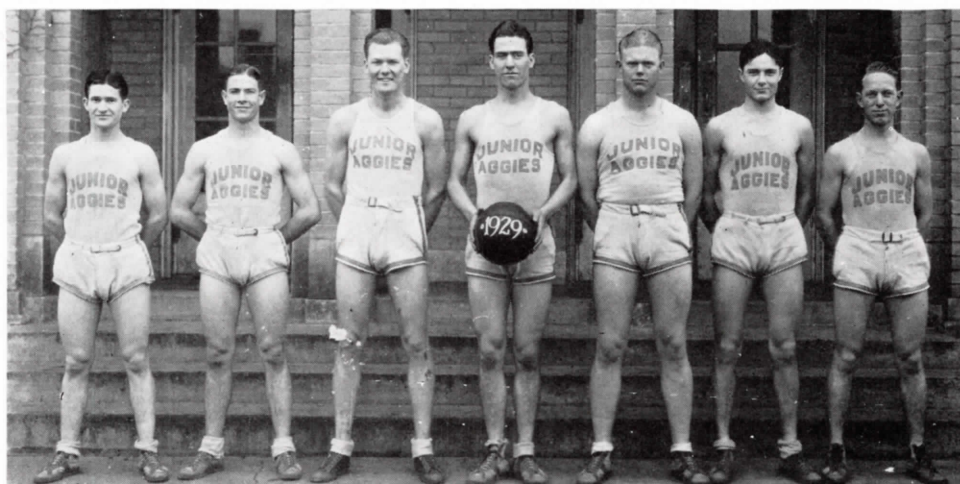
"THAT'S THE OLD FIGHT, BOYS"

Results of Football 1928

N. T. A. C.....	12	Texas Military College	6
N. T. A. C.....	32	Clifton College	0
N. T. A. C.....	0	Wesley College	26
N. T. A. C.....	8	Hillsboro Jr. College	6
N. T. A. C.....	18	Wichita Jr. College	0
N. T. A. C.....	14	Paris Jr. College	19
N. T. A. C.....	0	Blinn Memorial College	19
N. T. A. C.....	18	Gainesville Jr. College	6
N. T. A. C.....	2	Ranger Jr. College	0
N. T. A. C.....	14	Denton Teachers Reserves.....	0
	<hr/>		<hr/>
	118		82



BASKETBALL



CHAMPIONS OF 1929 BASKETBALL

Results of 1929 Basket Ball

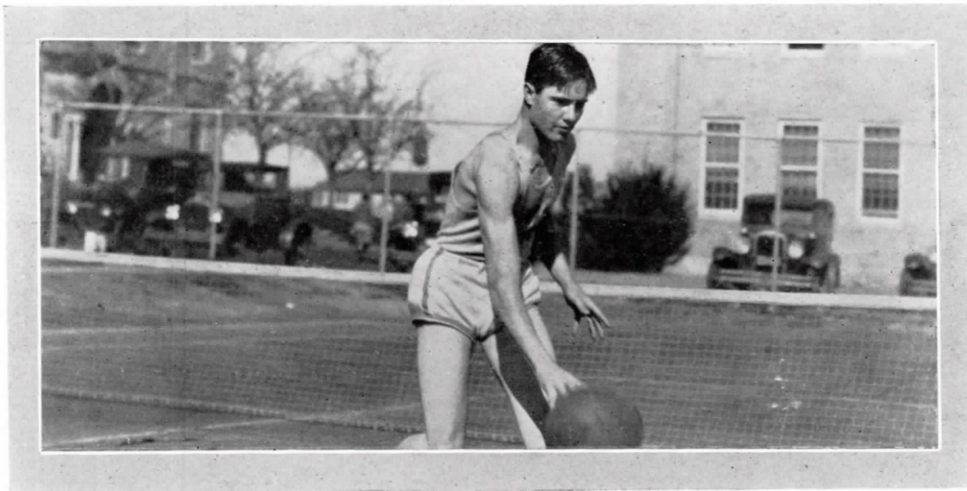
N. T. A. C.....40	Harding College	34	N. T. A. C.....35	Paris Junior College.....	15
N. T. A. C.....45	Harding College	26	N. T. A. C.....25	Paris Junior College.....	17
N. T. A. C.....30	Gainsville Jr. College.....	21	N. T. A. C.....38	Weatherford Jr. Col.....	37
N. T. A. C.....12	Gainsville Jr. College.....	19	N. T. A. C.....38	Weatherford Jr. Col.....	23
N. T. A. C.....31	Texas Power & Light.....	55	N. T. A. C.....51	Webb City	23
N. T. A. C.....38	Wichita Falls Jr. Col.....	15	N. T. A. C.....63	T. P. Coal & Oil.....	14
N. T. A. C.....35	Wichita Falls Jr. Col.....	11	N. T. A. C.....42	Texarkana Jr. College.....	40
N. T. A. C.....33	Texarkana Jr. College.....	22	N. T. A. C.....37	Texarkana Jr. College.....	35
N. T. A. C.....36	Texarkana Jr. College.....	17	N. T. A. C.....35	Paris Junior College.....	26
N. T. A. C.....36	Wichita Falls Jr. Col.....	13	N. T. A. C.....26	Paris Junior College.....	23
N. T. A. C.....43	Wichita Falls Jr. Col.....	17			
				<u>769</u>	<u>503</u>



CAPT. MAXEY

Captain Maxey

Captain Maxey was the outstanding performer in the conference this year. He was not only a good all-around man, but he was an exceptionally good marksman when it came to hitting the basket. Maxey, making 281 points for the season, left a goal for conference scorers to shoot at.



"EACH MAN'S A MANN"

Review of the Season



RAINING season opened with about thirty men out, each of whom was determined to hold down a regular position on the team. Within a few days, however, the squad had narrowed down to about twelve men: Maxey, Casey, Bigley, Hemmle, Creecy, Weller, Dunsworth, Schutts, and Johnson were picked as mainstays of the team. The Hornets opened the season with a long home stand. The first team taken on was Harding College to whom two decisive defeats were administered. In the next series with Gainesville, the Hornets suffered one defeat, their only one in the conference. The team next made a trip to Wichita Falls where they defeated the Indians in both games by a decisive score. After the Aggies returned home, they were engaged in a series of six games, two each with Texarkana, Wichita Falls, and Paris Junior College. Each game was won by good scores. The Aggies journeyed to Weatherford and here they administered a 38-37 defeat to the Coyotes the first night, and a 38-23 defeat the second night. The Aggie strength was shown in defeating the Coyotes, since they were the 1928 Champions of their district.

The longest road trip of the season came when the Aggies toured northeast Texas, where they met Texarkana and Paris. In the series with Texarkana, the Hornets cinched the championship when they came from behind to win the last few minutes. The contest in Paris was not so closely contested. Thus ended one of the most successful seasons in the history of the school.



COACH MOORE



READY, AIM FIRE! BOOM!



Casey was one of the outstanding men on the squad. He was a consistent scorer and the hardest fighter on the club. Casey, playing his first year as a regular, dealt plenty of misery to his opponents.

Bigley was far superior to any other center in the conference. His hustle and long reach served to keep the opponent's score down. Bigley had a good eye for the basket and made many points during the year.

Hemmler was a new man to the team and did not see very much action. He could be depended upon to get in there and fight any time he was called upon.

Johnson was fine at guard during his stay with the team. He was unable to return after mid-term and his absence was felt by the whole team.

Weller was taking his first try at basketball this year and made a good success at it. Weller did not get into the game until after the middle of the season, but after he got started he gave a good account of himself.

Creedy was undoubtedly the fastest guard in the conference. He was a fast dribbler and an accurate passer. He was good at shooting goals and was a dangerous man at all times.

Spence, Schutts and Dunsworth were three men who did much to help develop the team. None of these men saw much action, but they were out every evening helping in any way that they could.



BASEBALL



'28 BASEBALL SQUAD

Review of the 1928 Season



WITH eight letter and reserve letter men back and an abundance of new material out, it seemed that the '28 nine would set the conference afire. The team looked powerful on paper since it had Seale and Thomas behind the bat; a complete infield in McCulloch, Butler, Pope, and Jackson, and the nucleus of a good outfield in Burress and Captain Hunter. In addition, the squad was bolstered by Hood, Ratliff, Creecy, Swinnea, Maxey, Casey and McGee. But a team on paper and a team on the diamond are altogether different. Sad, but true. The Hornet nine started the season by taking two practice games from Polytechnic High and dropping one game to the strong T. P. Coal and Oil team of Ft. Worth by a close score. These games seemed only to strengthen the prediction that



CAPT. HUNTER

Captain Hunter

Hunter was a fine leader and did much to keep the morale of the team up while it was facing defeat. He was a good clean fighter and leader. A ball hit in his direction could be counted as an out even before it was caught. His chatter in field kept the Hornets fighting all the time. He will be a great loss to the team of '29.



"HIT 'EM HIGH"

N. T. A. C. was to boast a powerful nine. But as soon as the Aggies struck Junior College competition, these predictions were shattered. Decatur furnished the first test for the Hornets. The Hornets dropped both ends of the two game series by scores of 9 to 4. Out for revenge, the Hornets next took on Weatherford, and in an extra-inning battle came out on the long end of a 9 to 5 count. In a return game between the two teams, N. T. A. C. won by a score of 8 to 5. In a four game series with the Hillsboro Indians, the Aggies were able to win only one game and to hold the Indians to a tie in the last game of the series. The four game series with Wesley was a 50-50 proposition. Each team won two games on its home diamond. All in all, it seemed that the Hornet nine left its punch behind on its road games, only to find it increased on the return to the home lot.

Coach Moore

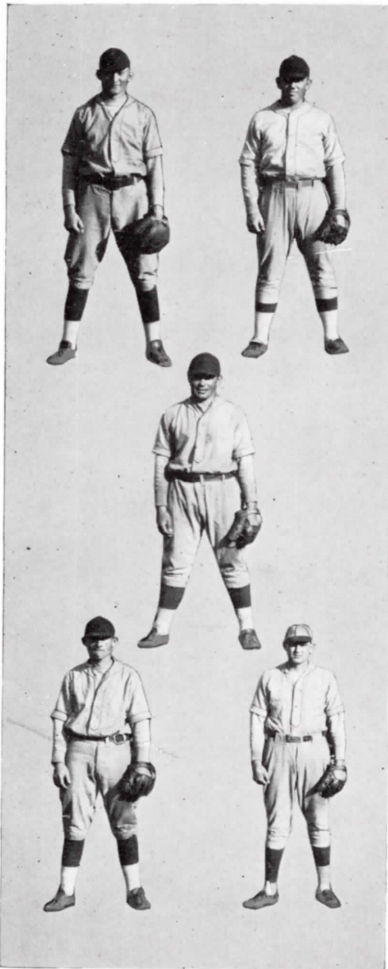
This was Coach Moore's first year to handle the Baseball squad but a very formidable team was developed. He was always full of fight and never failed to place a fighting team upon the field. There was never a man on a team of Coach Moore's who would not fight to the last for him. Coach was a popular man with the students on the field of encounter as well as off of it.



COACH MOORE



"YEA, TEAM FIGHT"



"Mac," playing his second year with the Hornets, made one of the best men that Coach Moore had. "Mac" was one of the leading hitters on the team. It will be hard to find a man to take "Mac's" place in '29.

This was Hood's first year on the team. He was a great fielder and could always be depended upon to get a hit when the need was great. Hood was a great fighter and a favorite with the team.

Dennis, playing his last year on the team, proved to be one of the best fielders in the conference. Butler could always be depended upon to stop the ball when it was coming in his direction.

The diminutive Jackson was one of the mainstays of the infield. On many occasions he brought the stands to their feet with his spectacular play. Bob always hit when hits meant runs.

Pope was a utility infielder of no mean ability. He was always there hustling. As is usually the case with infielders, Joe was no "Sultan of the Swat" but he was in there in a pinch.



"WE STING 'EM HARD"

Ratliff, playing his first year with the Hornets, proved to be a real ball hawk. He covered his part of the outer garden in big style. "Ty" was the leading hitter on the team of '28.

"Ely," playing his first year on the team, made a real name for himself in the outfield. He was one of the best hitters on the club and was gifted with the ability to steal a base whenever the occasion arose.

"Burro" was the mainstay of the pitching staff. He never met his equal in the conference. As an outfielder Burress was as good as any that could be found. He will be missed from the team this year.

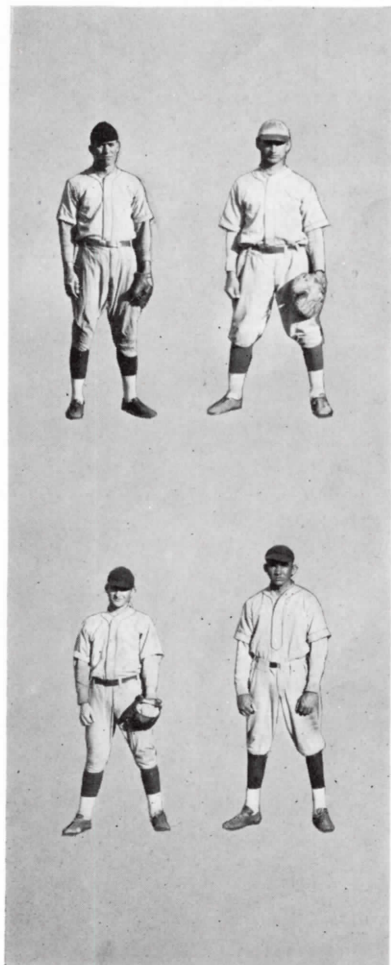
Seale did all of the catching and performed in grand style. Tommie had a good arm and could throw a man out with ease at any base. The team showed their appreciation of his playing by electing him Captain.

Swinnea was used as a utility infielder the first part of the season, but his real value was soon discovered and he served as a pitcher the remainder of the year. He will be missed from the squad this year.





NORTH AGGIE-LAND



Maxey, Thomas, Casey, and McGee were the remaining men on the squad. Maxey was included in the pitching staff along with McGee, Burress, and Perkins. Although he did not always win, he turned in a good game and was dependable. Thomas was utility man and also alternated with Seale at the catching job. Casey was reserve outfielder and served as a pinch hitter many times during the season.

Results of 1928 Baseball

N. T. A. C.	8	Polytechnic High School	3
N. T. A. C.	4	Decatur Baptist College	9
N. T. A. C.	15	Polytechnic High School	4
N. T. A. C.	4	Decatur Baptist College	9
N. T. A. C.	0	T. & P. Coal & Oil Co.	1
N. T. A. C.	9	Weatherford College	5
N. T. A. C.	5	Hillsboro Jr. College	4
N. T. A. C.	7	Hillsboro Jr. College	11
N. T. A. C.	0	Wesley College	4
N. T. A. C.	2	Wesley College	3
N. T. A. C.	3	Hillsboro Jr. College	7
N. T. A. C.	6	Hillsboro Jr. College	6
N. T. A. C.	8	Weatherford College	5
N. T. A. C.	9	Wesley College	8
N. T. A. C.	4	Wesley College	1
Total	84	Total	80

No championship was awarded.



T R A C K



SQUAD

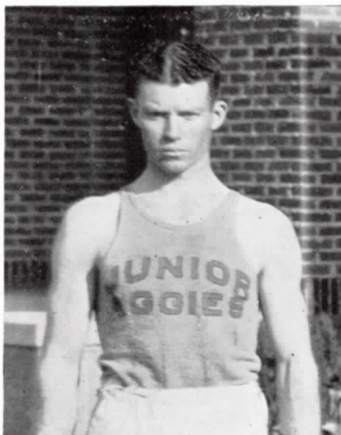
Review of the 1928 Season



ALTHOUGH Coach Moore and Mr. Rumph only had as a nucleus five letter men around which to build their 1928 machine, they whipped their squad of mediocre material into shape and made a creditable showing in the 1928 Track season. The veterans reporting were: Captain Thompson, dashes and relays; Creecy, relays, broad jump, and javelin; Barron, javelin; Smith, broad jump, high jump, and pole vault; McCulloch, hurdles and pole vault.

Track stock took a decided slump in the first semester when John Lewis, high point man of the 1927 meet, and George Wilson, distance man of 1927, dropped out of school. With the loss of these two men, the Junior Aggie mentor was forced to revamp his team to some extent.

The Junior Aggies started off the season at the Stock Show meet. Although they failed to place in the meet, they made a very worthy showing in the mile relay in which they competed against such teams as S. M. U., Texas A. & M., Baylor, and Oklahoma A. & M.



CAPT. THOMPSON

Captain Thompson

Harvey "Red" Thompson was captain and star quarter-miler of the 1928 team. As lead-off man he never failed to give his team a margin to play on. In addition to the 440-yard race, he equalled the conference record in the low hurdles. He shares with Creecy the honor of setting a new conference record—winning the conference quarter-mile in a most decisive manner for a new conference record.



"GIVE US ROOM"

At the Texas relays they failed again to place due to the excellent time made by their competitors.

They made a step from the rear at the Rice relays by winning fourth place in the mile relay.

The next meet the Junior Aggies began to show improvement. They took second honors in a triangle meet with T. C. U. and N. T. S. T. C. at Denton. The Eagles scored $64\frac{1}{2}$ points, the Aggies ran up $43\frac{1}{2}$ points, and T. C. U. 26 points.

In the dual meet with the Denton Teachers the Junior Aggies lost by 15 points. The final score being 65 to 50 in favor of the Eagles.

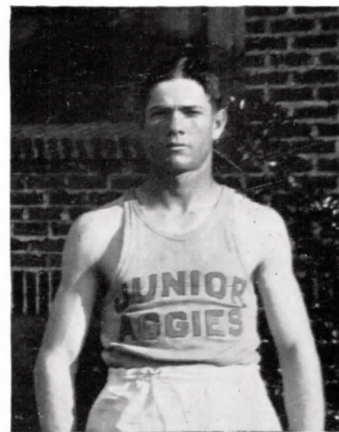
The Dallas Y. M. C. A. was completely outclassed by the Junior Aggies. They amassed 90 points to the Y. M. C. A.'s 26.

T. C. U. was the next track team to meet defeat at the hands of the Junior Aggies. They won this meet by a 53 to 51 score.

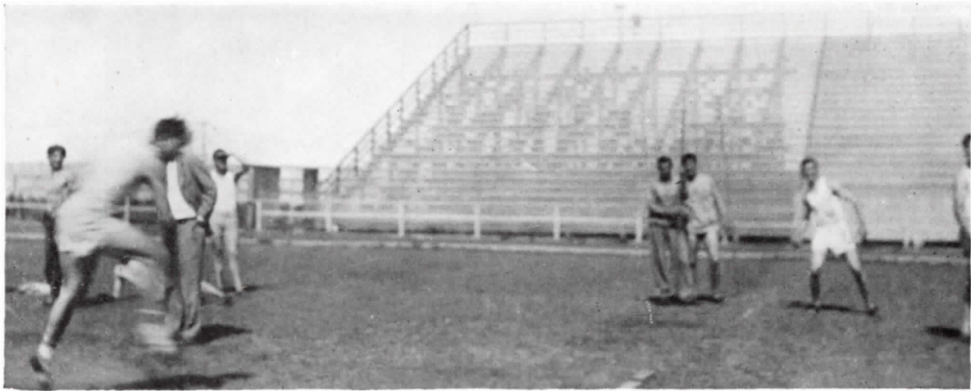
In the State meet the Junior Aggies took only third place, but they broke two meet records.

Captain-Elect Creecy

"Owlface" Creecy stands out as an all around trackster of N. T. A. C. This versatile gentleman was a consistent winner in the javelin, broad jump, and relay. He also annexed quite a few points in the dashes. He performed the outstanding event of the season when he tossed the javelin 168 feet 8 inches for a new record for the Texas Junior College Athletic Association in the Conference Track Meet.



CAPTAIN-ELECT CREECY



"QUIT NEVER"



Barron stands out as a javelin tosser, and as a runner in the dashes. He is given due credit for his work in the relays. He showed his ability with the javelin at the conference meet by taking second place.

Cearley was an ever-ready quarter miler. He won a berth in the relay team before the Stock Show meet, and was one of the four Aggies with the baton. He will always be remembered by the Junior Aggie tracksters.

Tittle stands out in the shot, discus and javelin. He had no peer in N. T. A. C. in these field events. Tittle was the high pointer in the dual meet with Denton, winning first in shot and discus and second in javelin.

Dees was a man of ability, but handicapped by the fact that he was ineligible for the state meet. He was a consistent winner in the high hurdles and the high jump.

Brummett, although without previous experience, came out for the track team and developed into one of the bright lights of the '28 season. He was a member of the relay team, making all the trips. He was a hard worker and deserved his merits.

Montfort may be remembered for the many points he gained for N.T. A. C. in the hurdles. He also annexed a few markers in the discus.



"WE STING 'EM HARD"

Jackson, another new man for the team, was an adept mid-distance runner and furnished some keen competition for the relay men. He was a hard worker and a popular man.

Nowlain was always getting high when there was a vaulting pole near. He tied for fourth place in the State meet.

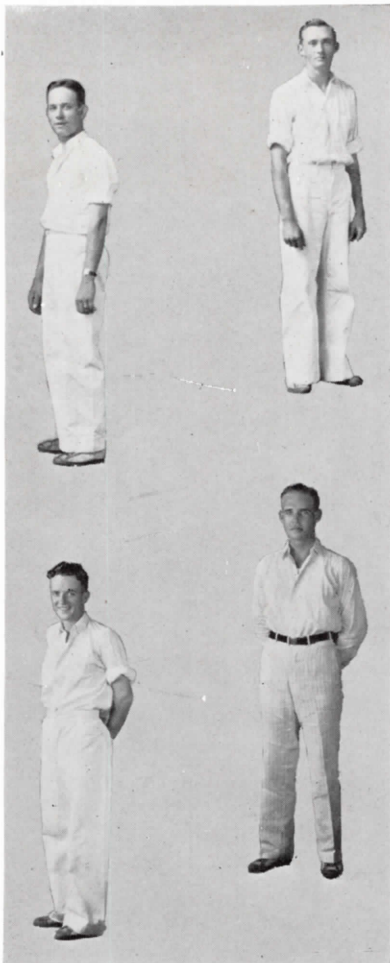
McCulloch was an all around athlete. He could not devote as much time to track as the other boys on account of baseball, but he won a number of points for N. T. A. C. in the hurdles and pole vault. He copped third place in the pole vault in the State meet.

Harlain, Gentry, Adkins, and Josey deserve credit for the good work they did in middle distance. Harlan stepped out in the dual meet with the Dallas Y. M. C. A. and took first honors in the half mile.





"WHERE HORNETS SWARM"



Wagoner, better known as "Bugs," was a very capable tennis player, as was shown by his brilliant playing at the state meet. At this meet he absolutely refused to become excited and played tennis that showed him to be one of the best at the meet. His chop stroke was one that was hard for his opponents to return, and it showed, to say the least, that he had mastered the game to this extent. The Hornets will miss Wagoner in the 1929 matches.

Altman is a player who is always improving his game, and one who is always dealing his opponents plenty of misery. He is a brainy player, always cool and calculating. This was shown in the State meet when his opponent took the first set from him by the score of 6-0. This would have been enough to discourage the ordinary player, but with Altman it only served as a stimulant for better tennis, as was shown by his coming back and winning the match. This is Altman's last year with the team and he may be assured that he will be missed very much by the 1929 team.

Ditto is a player who studies the game of tennis very carefully, which accounts to some extent for his doing the unexpected. As a student of the game he plays with his team, hands and feet. His unexpected shots are ones that drive his opponents to exasperation, and cause him to bring home the bacon. Due to his work at the game and the results that he obtained in doubles at the state meet, he was awarded a letter on the 1928 team.

Hudspeth is an indefatigable player, which accounts for his "come-back" in his matches on the latter sets. His "service" is to return, especially with any accuracy. Bill is a real net player. Unconsciously in playing doubles Bill works his opponents for a return close to the net, which he "kills." Bill has the tennis "heart," the lack of which seriously handicaps some tennis players. The results of the 1929 team will depend largely on Bill's "racket," as he will be the only letter man back.



Baron von Huenefeld
*Commander of the
Bremen in Trans-Atlantic
flight*



Capt. Hermann Koehl
Pilot of the Bremen



Major Fitzmaurice
*Irish member of the
Bremen party*

ORGANIZATIONS







MELVINE JARRATT
EDWARD MAXEY
ROBERT PETERSON

VIOLET RICHARDSON
OLIVER WILSON
W. A. RANSOM, *Sponsor*

THE PUBLIC SPEAKING CONTESTANTS

In the picture above are the contestants who represented the college in the Texas Junior College Public Speaking Association between the times when The Junior Aggie went to press last year and when it goes to press in 1929.

The pictures of the one-act play group, which in 1928 with Susan Glaspell's "Suppressed Desires" won third place in the state, have never been run. The members of that cast were Virginia Galbraith, Howard Williams, and Evelyn Shackelford. Neither was the picture of Gynervra Adams ever run. In 1927 she won the junior college state contest in women's oratory; and in 1928, representing T. C. U. with the same oration, she won the senior college contest.

In April of 1928 Melvine Jarratt and Oliver Wilson did credit to the college in the district contest held at Wichita Falls. Miss Jarratt spoke on the necessity for further industrial development in Texas, and Wilson spoke on the matter of traffic accidents.

The one-act play group representing the college in 1929 was composed of Edward Maxey, Christine Fowler, Carl Sessions and Robert Peterson, each person taking part in at least one public presentation of "Poor Old Jim." Only a flip of a coin decided that Miss Fowler should be in the contest play at Paris, February 10th; Peterson and Maxey had the other two parts.



Elaine Bassett
 Freda Christman
 George Coley
President
 Tom Connor
 Obie Cotter
 Mildred Doyle
 Christine Fowler
 Frances Geeslin
 Genevieve Greer
 Robert Horton
Secretary

Dorothy Jarratt
 Wanetta Johnson
 Margaret Leslie
 Ruth Mayo
 Edward Maxey
Vice-President
 Merle McCool
 Jonnie McLarty
 Ouida McKissick
 Dorothy McNair
 Dorothy McCown
 Mary Carr McCown

Louise Nobles
 Frances Peed
 Robert Peterson
Reporter
 Violet Richardson
 L. P. Smith
 C. L. Smith
 Margaret Scott
 Rufie D. Thrash
 Steva Ross Whitehead
 Duncan Robinson
Sponsor

THE ATHENIAN CLUB

The Athenian Club was organized at the beginning of this school year under the direction of Mr. Duncan Robinson, sponsor. Mr. W. A. Ransom directs the dramatic activities of the group.

The purpose of the Athenian Club is to sponsor all activities pertaining to dramatics, debates, and oratory. Association with this club gives the student an opportunity to develop his talent along these lines of art.

In addition, the Athenian Club strives to acquaint its membership with modern trends in American Literature, and to create a desire for individual reading and interpretation of our national body of letters.



Virginia Alverson
 Elaine Bassett
 Keith Brandenburg
 George Coley
Vice-President
 Joy Coley
 Bill Cooper
 Mildred Doyle
Secretary and Treasurer
 Dorothy Greene
Reporter
 Edith Hamilton
 Anna Hardeman
 Austen Hargrave
President
 Bill Howard
 Ronald Illingworth
 E. L. Ivey

David Jones
 Fredna Mae Jones
 Jonnie McLarty
 D. M. McMains
 Charlie McMurray
 Eugenia Nicks
 Donna Mae Owen
 Roy Pender
 Elizabeth Pollard
 Opal Rodgers
 George Scott
 Grace Eleanor Shaw
 Clyde Smith
 Harry Wheat
 Inez Wilmot
 Estalleen Woods
 Tyson Woods

THE DALLAS CLUB

In September, 1927, the Dallas Club was organized for the purpose of promoting good fellowship among the students of the college whose homes are in Dallas. Since its organization, the club has sponsored many social functions and entertainments such as dances and weiner roasts. Every year the membership of the club has increased until it has become one of the largest clubs as well as one of the most active in school.

JUNIOR AGGIE 1020



FORD, HOLLIS P., *Major—President*

COLEY, GEORGE, *Captain*

CREECY, JOHN, *Captain*

PETERSON, ROBERT, *Captain*

SWIFT, BILLY, *Captain*

BIGLEY, LEROY, *First Lieutenant*

FORD, GEORGE, *First Lieutenant*

FRY, JESSE, *First Lieutenant*

HARGRAVE, AUSTEN, *First Lieutenant*

HOOD, JOE, *First Lieutenant*

POLLEY, DELBERT, *First Lieutenant*

SEALS, TOMMIE, *First Lieutenant*

WIGGINS, LEVIS, *First Lieutenant*

BEATY, MATT, *Second Lieutenant*

BRANDENBURG, KEITH, *Second Lieutenant*

CASEY, NEWMAN, *Second Lieutenant*

COOPER, BILL, *Second Lieutenant*

HUDSPETH, BILL, *Second Lieutenant*

JACKSON, ROBERT, *Second Lieutenant*

SCHUTTS, BILL, *Second Lieutenant*

SHEFFIELD, HOMER, *Second Lieutenant*

SMITH, CLYDE, *Second Lieutenant*

WHEELER, ROBERT, *Second Lieutenant*

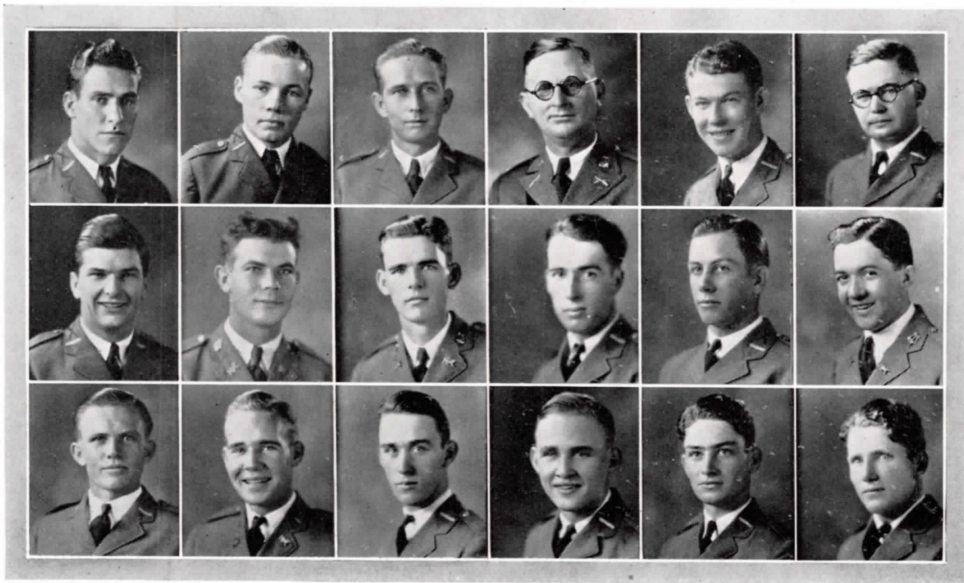
KELTNER, E. H., *Captain, Sponsor*

NORRIS, FRED B., *Captain, Sponsor*

THE OFFICERS' CLUB

The North Texas Agricultural College Officers' Club is made up of all the boys who "wear leather." They are chosen on the basis of scholarship, leadership, and military ability. The purpose of the club is to further co-operation and loyalty among the different companies.

Besides serious work, the Officers' Club also sponsors some very interesting entertainments. Since it is an organization made up of leaders, any entertainment which they give is worth attending.



E. H. BRUMMETT, *First Sergeant*
 J. G. CHAUNCEY, *Line Sergeant*
 D. V. FITZ, *Line Sergeant*
 GORDON FOWLER, *Line Sergeant*
 KARL HARBIN, *Line Sergeant*
 ROBERT HORTON, *Drum Major*
 JOE HOYLER, *Line Sergeant*
 EDWARD MAXEY, *First Sergeant*
 DEAN MURRAY, *First Sergeant*

L. T. NOWLAIN, *First Sergeant*
 W. H. PAYNE, *Line Sergeant*
 CORDEL PRINGLE, *Line Sergeant*
 CARL E. SESSIONS, *First Sergeant*
 J. P. SPENCE, *Line Sergeant*
 BUFORD SWAIN, *Sergeant Major*
 J. W. TAYLOR, *Line Sergeant*
 CAPTAIN E. H. KELTNER, *Sponsor*
 MIKE DITTO, *Line Sergeant*

THE SERGEANTS' CLUB

The Sergeant's Club has been in existence since 1927. It is an organization to which sergeants belong for the purpose of becoming better acquainted with each other and the duties of the rank.

At the beginning of this year, this club was re-organized. Under the leadership of Captain E. H. Keltner, P. M. S. T., the sergeants meet once a month, and receive special instruction in duties and information on various subjects.

The club has sponsored several entertainments during the year, and expects to give more of these entertainments in the future.



FIRST SOPRANO

Elaine Bassett
 Dixie Yates
 Genevieve Greer
 Natalie Davis
 Ann Hiett
 Thelma Butcher
 Catherine Williamson
 Freda Christman
 Claire Kiker
 Ursula Hull
 Bonnie Hudspeth

SECOND SOPRANO

Mabel Christman
 Estaleen Woods
 Inez Wilmuth
 Mozelle Wilkerson
 Rufie D. Thrash
 Elizabeth Pollard
 Margaret Leslie
 Lorene Kott
 Dorothy Jarratt
 Helen Hollingsworth
 Virgie Hart
 Marjorie Grogan

ALTO

Mary Alice Bradford
 Doris Cowan
 Christine Fowler
 Ruth Mayo
 Eugenia Nicks
 Eugenia Rigney

THE GIRLS' GLEE CLUB

The Girls' Glee Club under the direction of Miss Norma Chatham has progressed rapidly. The club has scored musical successes in the high schools of both Dallas and Fort Worth, and has received much recognition during the past year. Miss Gertrude Mae McFadden is the accompanist for the club. It is such organizations as the Girls' Glee Club that are putting the college on the map.



John Baker
 Lola Mae Bradshaw
 Ruby Britt
 Theta Bussey
 Jimmie Chauncey
 Juanita Cooper
 Tom Dugan
 Edwin Dodson
 Palma Duke
 William Fisk
 George Ford
 Rex Freeman
 Caston Gregory
 Gerson Halsley
 Gilbert Herndon
 Robert Horton
 Ursula Hull
 Maurice Johns
 Wanetta Johnson
 W. H. Johnson

Claire Kiker
 Bonnie Lea Langdon
 George Malaise
 Dorothy McCown
 Mary McCown
 Dorothy McNair
 Alice Moreland
 Theron Ruder
 Lydia Sellors
 Joyce Sheppard
 Key C. Smith
 Nellie May Stacks
 Bill Schutts *President*
 Frank Stanley
 Arthur Talkington
 J. W. Taylor
 Naoma Walker
 Julian Wells
 Grace Wilson
 G. E. Wheeler

THE FORT WORTH CLUB

To promote a spirit of true friendship among the "Home Towners" and to provide good times now and then is the purpose of the Fort Worth Club.

Its membership includes all students whose homes are in Fort Worth or Tarrant County. The organization is one of the leading clubs on the campus.



Elaine Bassett
 Carlene Beasley
 Theta Bussey
 Joy Coley
 Ruth Davis
 Genevieve Greer
 Martha Hahn
 Ursula Hull
 Marjorie Hutcheson
 Fredna Mae Jones
 Ruth Mayo
 Ouida McKissick

Lydia Sellors
 Pauline Tucker
Secretary
 Doris Wade
 Naoma Walker
 Catherine Williamson
President
 Dixie Yates
Vice-President
 Mrs. W. L. Hughes
Sponsor
 Miss Myrtle Rawls
Sponsor

THE AVOLENTE CLUB

In 1923, the Avolente Club was organized for social purposes only. The membership of the club is limited to twenty members. The girls who become members of this club must be congenial and have general ability. The club sponsors bridge, and an annual banquet for the football men.



Eva Biggers
 Doris Brown
 Mildred Doyle
President
 Dorothy Greene
Reporter
 Elizabeth Joiner
 Lorena Kott
 Margaret Leslie
 Merle McCool
 Donna Mae Owen

Olga Pickens
 Anne Sewell
Secretary and Treasurer
 Effie Smith
 Mrs. Sheppard
 Rufie D. Thrash
 Helen Winstead
Vice-President
 Miss Zelda Ramsey
Sponsor
 Miss Martye Poindexter
Sponsor

THE SANS SOUCI CLUB

The purpose in organizing the Sans Souci Club was strictly for the social development of students in the school. Sans Souci means "without care," and the spirit of the club members has always been one of carefree gaiety, which adds to the pleasantness of college life.

The club was organized in 1923. Since that time the club has enjoyed six years of success, and claims the distinction of being one of the oldest and most democratic clubs on the campus. One of its oldest traditions is friendship between old and new members.

During the past year many unique and interesting social activities have been sponsored by Sans Souci.



Freda Christman
 Mable Christman
 Natalee Davis
 Christine Fowler
 Frances Geeslin
 Wilena Kingston
 Dorothy McCown
 Mary Carr McCown

Dorothy McNair
 Alice Moreland
 Violet Richardson
President
 Iva Lee Whitson
Secretary and Treasurer
 Miss Ethel Barber
Sponsor

Miss Norma Chatham
Honorary Member

LA DOCENA CLUB

La Docena means "the dozen;" there are twelve girls, besides sponsors, in the club.

This club was organized in November, 1927, for social purposes only. The girls are selected upon their congeniality and good sportsmanship. The initiation exercises in the club tend to give a Spanish effect since the name of the club is Spanish.

La Docena is the newest of the three girls' clubs on the campus, but it has already sponsored several very interesting entertainments.



Charter Members

Claude Ball
 George Coley
Vice President
 Tom Connor
 Taft Dunsworth
Secretary
 Grover Godfrey
Reporter
 Howard Hall
 Don Howard

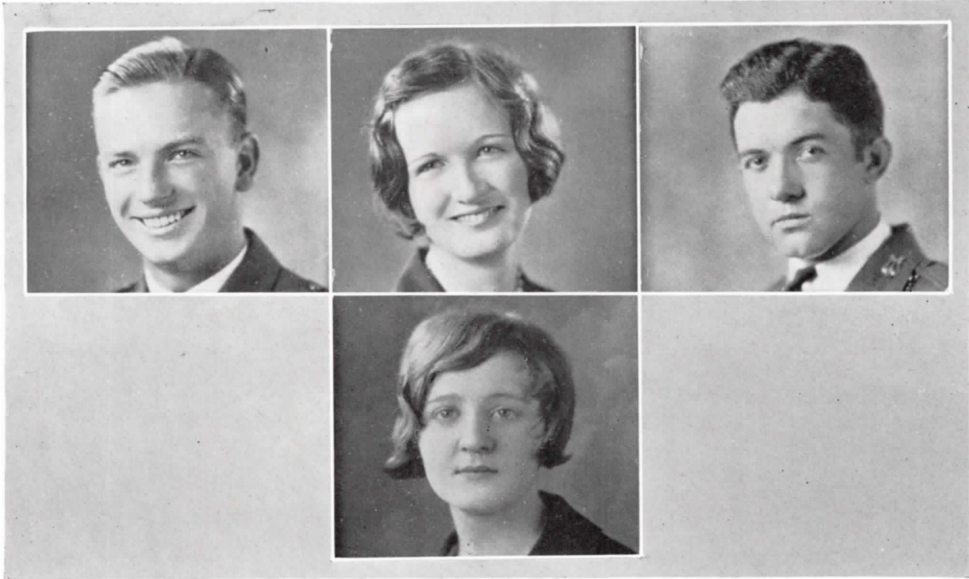
Bill Hudspeth
President
 Ronald Illingworth
Club Reporter
 Grant Jackson
 Bill Schutts
 John Simmons
 J. B. Preston
Sponsor

N. T. A. C. TENNIS CLUB

The Tennis Club was organized in 1929 and the following officers were elected: Bill Hudspeth, president; George Coley, vice-president; Taft Dunsworth, secretary; Grover Godfrey, *Shorthorn* Reporter; and Ronald Illingworth, club reporter.

The club is to be a social organization as well as athletic. The definite objects of the club are to promote greater interest in tennis at the College, and to win the state championship each year. The members of the club are those who are interested in tennis as a form of athletics and as a pastime.

Mr. J. B. Preston is faculty sponsor and the coach of the club. With members such as those pictured above, and a sponsor such as Mr. Preston, it is almost certain the club will attain the goals it has in view.



BILL COOPER
ANN HIETT

BOB HORTON
RUTH MAYO

MIXED QUARTET

For the first time in several years, the College boasted a mixed quartet which has represented the school on numerous occasions. It was chosen from the boys and girls chorus, not necessarily upon the merits of the four singers; but because their voices blended nicely. In this quartet Ann Hiatt sings soprano; Ruth Mayo, contralto; Bill Cooper, tenor; and Bob Horton, basso.

The quartet has appeared over radio several times, and also represented the College at the convention of Junior Colleges in Ft. Worth. In all of its appearances it has made a very creditable showing. The group has also appeared on several occasions in entertainments, in assembly, and has taken part on other programs given in Arlington and vicinity.



ELAINE BASSETT
VIRGINIA ALVERSON

GRACE SHAW

EUGENIA NICKS
CARLENE BEASLEY

STRINGED ENSEMBLE

One of the new musical features at the College this year was the violin ensemble, composed of five girls. Miss Eugenia Nicks is the piano accompanist for this ensemble. These girls have worked hard with Miss Chatham; and, though their practice has been rather irregular, they have accomplished much.

Contrary to the usual arrangement of such ensembles, this quartet was not grouped according to first violin, second violin, etc.; their music required that each one be able to play any part of the arrangement.

This group of girls has played over radio and for numerous other entertainments. These girls and their director deserve a great deal of credit for their success this year as it is not often that a school the size of this can boast of an ensemble with such talent.



FIRST TENOR

Bill Cooper
 Oliver Wilson
 Dean Murray
 L. T. Nowlain
 Edward Maxey

SECOND TENOR

Jess Bellamy
 Howard Taylor

Leslie Smith

L. P. Smith
 Mike Ditto
 Weldon Brower
 Walter Payne
 Homer Sheffield

BASS

Robert Horton
 Robert O. Peterson

THE MEN'S GLEE CLUB

The Men's Glee Club is a popular organization in the College. It has aroused much enthusiasm among the masculine students because of the trips that it makes to neighboring schools. Miss Norma Chatham, director of the Club, expects great things of it in the future. Miss Gertrude Mae McFadden, accompanist, also deserves credit for her faithful work during the year.

JUNIOR AGGIE 1929



Doris Brown
 George Coley
 Joy Coley
 Christine Fowler
 Gordon Fowler
 Edith Hamilton

Eugenia Nicks
 Robert Peterson
 Oliver Pike
 Homer Sheffield
 J. W. Taylor
 Steva Whitehead

Fannie Mae Willis

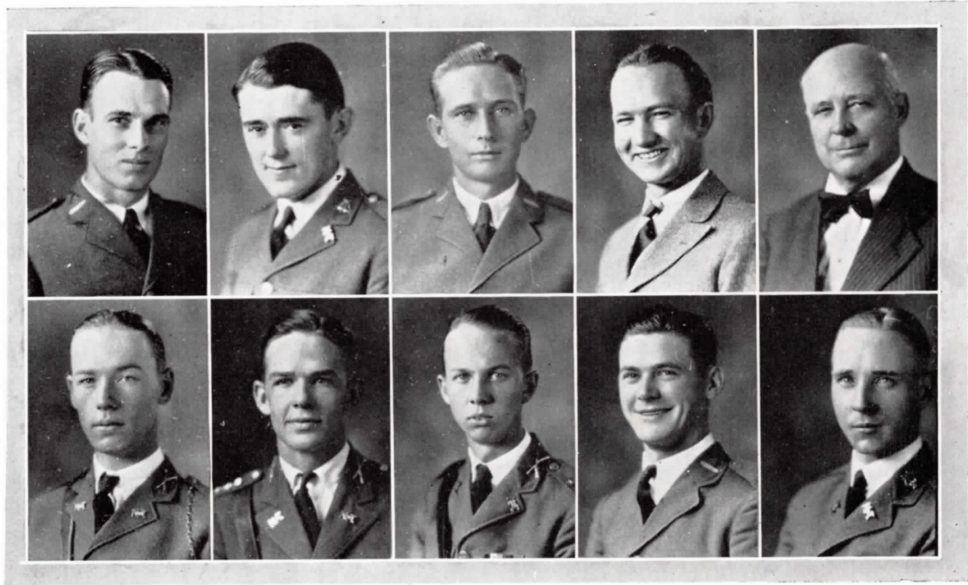
THE PHI KAPPA THETA CLUB

The Phi Kappa Theta Club was organized two years ago for the purpose of encouraging scholarly ideals and a spirit of devotion to study.

In order to belong to this organization, a student must be taking a minimum of fifteen hours of college work, and must make an average of above 89 per cent. on one semester of work.

Although organized with a scholarly goal in view, the club sponsors a lively social entertainment every month for the members and their guests.

JUNIOR AGGIE 1920



William Conlee
 Alonzo Court
 Teddy Dempsey
 D. V. Fitz
 George Ford
President

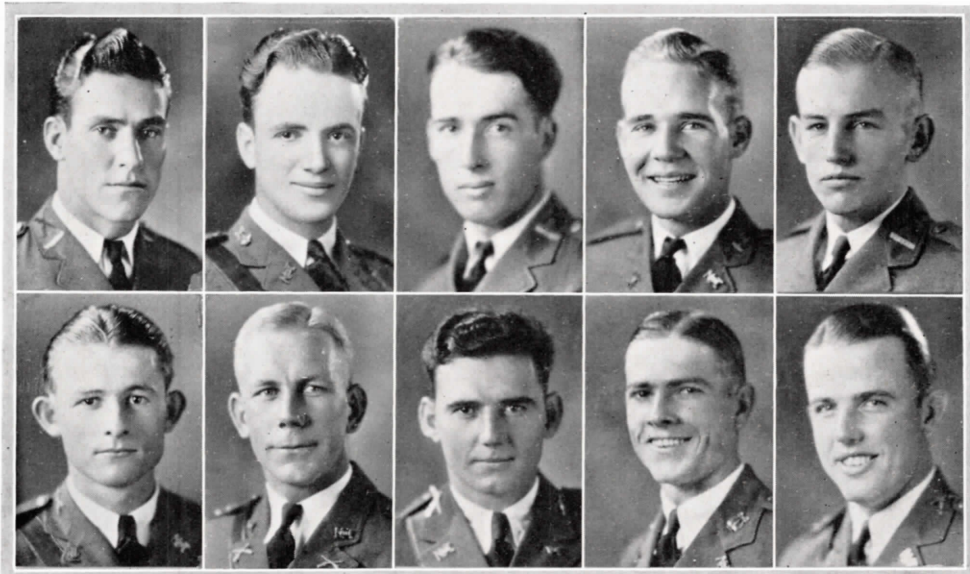
D. A. Bickel
Sponsor

L. G. Meier
Secretary
 George Scott
 Billy Swift,
Social Chairman
 L. C. Wiggins

THE DE MOLAY CLUB

One of the ideals of the De Molay organization is to be of some service to humanity. The College chapter of this organization strives to live up to all of the ideals of the De Molay. Since the cadets' standard of ideal conduct is similar to that held by the De Molays', the local chapter was organized to keep up this spirit.

JUNIOR AGGIE 1920



L. Bigley
Secretary-Treasurer

N. Casey
Jess Cearley
J. E. Creecy
Vice-President

H. A. D. Dunsworth
Sponsor

T. Dunsworth
D. Faith
Bill Hudspeth

R. T. Jackson
Reporter

H. C. Johnson
E. E. Maxey
J. C. Moore
Sponsor

D. Murray
J. M. Odom
P. Peck
D. R. Polley
L. D. Ratliff
Sergeant-at-Arms

C. P. Rumph
Sponsor

Tommie Seale
President

J. P. Spence
B. Swain
J. W. Taylor
L. C. Thomas
R. Timms
N. Weller

"T" ASSOCIATION

The "T" Association was organized January 9, 1929, with eleven charter members. The officers elected for the year 1929 were: Tom Seale, president; John Creecy, vice-president; Leroy Bigley, secretary-treasurer; L. D. Ratliff, sergeant-at-arms; Robert Jackson, reporter.

The "T" Association is composed of all male coaches and all men who have been awarded the "T" by the Athletic Council, and initiated into the organization. Men who have received letters before 1929 may become charter members upon application.

The "T" Association had a four-fold purpose in mind when it organized:

1. To promote the spirit of fellowship among athletes and the true spirit of sportsmanship toward opponents.
2. To establish and promote athletic traditions in N. T. A. C.
3. To raise the scholastic standards of the athletes of N. T. A. C.
4. To secure and preserve pictures of all athletic teams of the past and the future. These pictures will be kept on display for everyone.



Helen Winstead
Secretary-Treasurer
 Wilena Kingston
 Nellie Mae Stacks
 Doris Cowan
 Fredna Mae Jones
 Iva Lee Whitson
 Lorene Kott
 Anna Hardeman
 Margaret Leslie
 Celeta Keith
 Katherine Williamson
 Dixie Yates
 Joy Coley
 Thelma Butcher
 Elizabeth Dickey
 Freda Christman
 Genevieve Greer
 Eva Biggers
 Marjorie Hutcheson

Martha Hahn
 Cynthia Stough
 Elizabeth Joiner
 Alice Moreland
 Inez Wilmot
 Ruth Davis
 Doris Wade
 Nell Victory
President
 Olga Pickens
Vice-President
 Bonnie Hudspeth
 Natalee Davis
 Mildred Doyle
 Mary Kate Huffman
 Dorothy Jarratt
 Mary Alice Bradford
 Lucille Burress
 Katherine Ellis
 Louise Nobles

Steva Whitehead
 Doris Brown
 Rufie D. Thrash
 Jonnie McLarty
 Doris Bondurant
 Frances Peed
 Louise Sanders
 Ann Hiatt
 Eugenia Nicks
 Mamie Lee Brewer
 Lydia Sellors
 Elaine Bassett
 Pauline Tucker
 Theo Vandaveer
 Gene Neville
 Donna Mae Owen
 Frances Geeslin
 Martye Poindexter
 Mrs. Lillie Pearl Chamberlain
Sponsor

THE HOUSEHOLD ARTS CLUB

The Household Arts Club was organized for the purpose of giving girls a better understanding of practical home economics work.

In 1927-1928 the membership of the club was extended to include every one in school.

One of the principal objects in view for the club during 1928-'29 has been the purchase of an oil painting to go in the lower hall of the Administration Building, directly opposite the front entrance.



M. D. Beaty
 L. Bigley
 H. Bryan
 G. T. Coley
 Bill Cooper
 C. T. Cruce
 H. Covington
 Jeff Fox
 D. Faith
 D. V. Fitz
 E. Gentry
 C. Gibson
 C. L. Gregory
 A. Hargrave
 W. C. Hayden
 O. S. Hall
 A. J. Holmes
 Karl Harbin
 J. D. Josey
 L. Linnen
 J. M. Moncrief
 D. Murray

Jas. Odom
 W. H. Payne
 R. C. Person
 O. Pike
 J. C. Roberts
 Tommie Seale
President
 Bill Schutts
Vice President
 Clyde Smith
Reporter
 K. C. Smith
Secretary-Treasurer
 R. Smith
 R. Schuck
 L. Talkington
 J. W. Taylor
 H. Wheat
 N. Weller
 R. Wheeler
 L. D. Williams
 W. Wilson
 W. T. Woods

HONORARY MEMBERS
 Dean E. E. Davis
 Dean G. L. Dickey
 D. A. Bickle
 Capt. F. B. Norris
 C. C. Rigney

FACULTY SPONSORS
 J. M. Barcus
 R. W. Burdett
 Eugene Davis
 H. A. D. Dunsworth
 Fred Earhart
 Earl Kirk
 Chas. MacDonald
 C. A. McCombs
 H. D. McMurtry
 W. A. Ransom
 D. W. Robinson
 C. P. Rumph
 F. M. Smith
 J. D. Summerhill

THE ENGINEERING SOCIETY

Only a short time ago the Engineering Society was organized. All students enrolled in any Engineering course are eligible to join this society. The purpose of the club is to keep abreast of modern trends in engineering.

JUNIOR AGGIE 1920



Chesley Bain
 Pope Ballinger
 Jess Bellamy
 Doris Bondurant
 Mamie Lee Brewer
 Floyd Carlock
 John Cearley
 Ottice Chaudoin
 James G. Chauncey
 Mabel Christman
 William Conlee
 Robert Caperton
 John Creecy
 C. E. Curry
 T. R. Dempsey
 Mildred Doyle
 Katherine Ellis
 Doyle Evans
 Frank Ferguson
 Murray Ferguson
 Hollis P. Ford
 Gordon Fowler
Vice-President
 Christine Fowler
Secretary
 Jesse Fry

Monroe Geron
 Grover Godfrey
 Dorothy Greene
 Marlin Guy
 Howard Hall
 Edith Hamilton
 Margaret Henderson
 Perry Hester
 Joe Hood
 Robert Horton
 Arlie Hooks
 William Howard
 Joe Hoyler
 Bill Hudspeth
President
 Irvin Hemmle
Reporter
 Wanetta Johnson
 Webb Joiner
 David Jones
 Roy Jones
 Margaret Leslie
 Merle McCool
 Dorothy McNair
 L. G. Meier

L. T. Nowlain
 Robert Odom
 O. K. Parks
 Comer Patterson
 Cordel Pringle
 W. H. Pritchett
 Eugenia Rigney
 G. C. Scott
 Tommy Seale
 Lydia Sellors
 Carl Sessions
 C. R. Sheffield
 Grace Shaw
 Mattie Mae Swain
 Roy Tront
 Blanche Waggoner
 Joel Waggoner
 Julian Wells
 L. C. Wiggins
 Oliver Wilson
 Catherine Williamson
 Robert Wheeler
 Sydney Wright
 Tom Yarbrough
 Willie Yoakum
 Jonnie Pearl Zuefeldt

THE COMMERCIAL CLUB

Every student of the College who takes any subject listed under Commercial Arts or Business Administration is eligible to join the Commercial Club.

The club is five years old. Its purpose is to further business interests and ideals. Membership in the club is an advantage for every prospective business worker.

JUNIOR AGGIE 1020



Marlin Dollahite
 E. B. Baker
 John Finch
 W. D. Deweld
 Alton Goodnight
 Collett Johnson
 Paschal Johnson
 A. R. Lowance
 Paul Craft
 W. E. Martin
 Leon Derryberry
 G. D. Spears
 Joseph Zajicek
 U. D. Walls
 C. W. Kinzy
 Roy Yealts
 Leonard Bass
 Harlon Burnett
 Travis W. Clark
 B. L. Cook

Murray Duderstadt
 Edwin Dodson
 O. C. Everett
 Guy Fellmy
 James Finch
 Luther Foster
 Homer Harris
 Charles Harris
 Byno Jeter
 Earl Park
 Marcus Pitts
 Clarence Rollins
 W. C. Peden
 Paul Sorenson
 Clyde Stewart
 Thurman Wood
 Lester Keisler
 Leonard Lee
 O. M. Couch

Floyd Carlock
 C. E. Curry
 T. R. Dempsey
 Katherine Ellis
 Marvin Guy
 Arlie Hooks
 Wanetta Johnson
 W. M. Joiner
 S. H. Pritchett
 Roy A. Jones
 O. K. Parks
 Hugh Smith
 Erwin Sossomen
 Charles Sheffield
 E. J. Wilson
 Sidney Wright
 Dick Yates
 Howard Johnson
 Curtis McGown
 Norman Norwood

THE "CO-OP" SOCIETY

The "Co-op Club" was organized in 1927 for the purpose of training students in leadership. No officer is allowed to hold office for over three months. This year a new group of co-operative students, the commercial group, has been added to the membership of the club.

JUNIOR AGGIE 1929



George Coley
President
 Keith Brandenburg
Vice-President
 Woodrow Wilson
Secretary
 Earnest Ray
Sergeant-at-Arms
 H. M. Hall
Official Bouncer
 Jess Bellamy
 E. H. Brummett
 C. L. Gregory
 Rex Freeman
 Austen Hargrave
 L. T. Nowlain
 Joe Waggoner

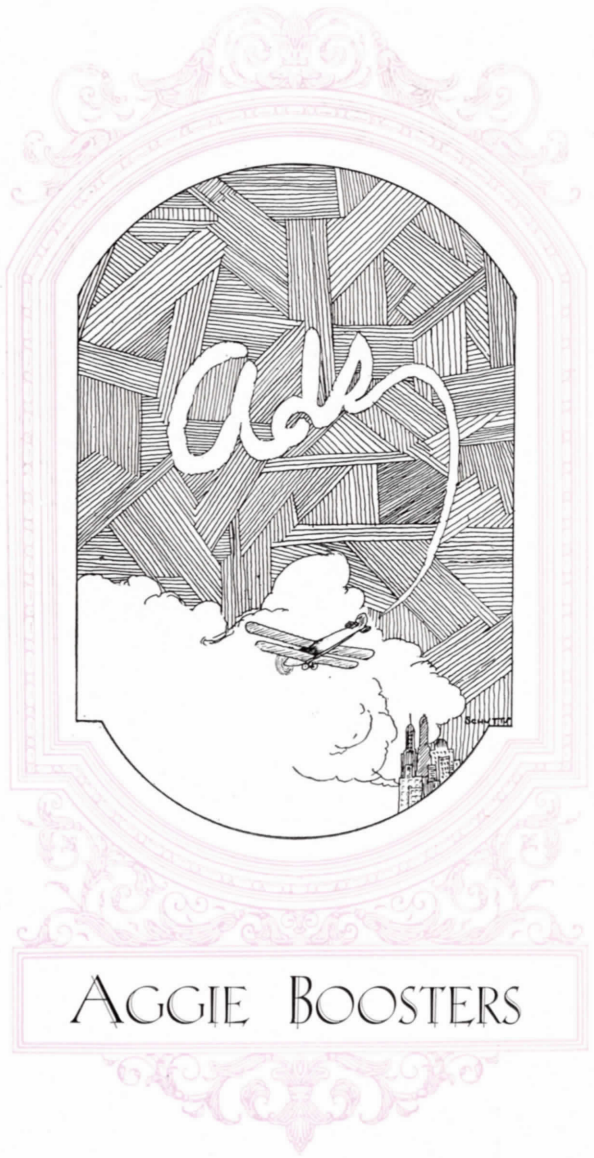
Harry Waeat
 Oliver Wilson
 C. B. Smith
 J. W. Baker
 Samuel Back
 Maurice Bullock
 H. B. Felder
 Ronold Illingworth
 David Jones
 George Malaise
 Sonny McCool
 D. M. McMains
 Roy Pender
 Charlie McMurray
 A. L. Talkingten
 J. L. Wells

Tyson Woods

THE BULL PEN SOCIETY

The Bull Pen Society is made up of all free white male students who live at home. They are members of the Society whether they wish to be or not.

Their meetings are held daily at 12:00 o'clock. Programs which consist of stale jokes and speeches are rendered daily at this time. Refreshments are served provided each man brings his own. Each member has a title which is high sounding, but it is high in name only. One of the purposes of the club, aside from entertainment, is to develop school spirit among day students.



AGGIE BOOSTERS

*The Combination of Neatness
and Quality in*

OUR UNIFORMS

*Make Them the
Best
for the N. T. A. C. Cadet*



FRANK BROS.

MILITARY SUPPLY COMPANY

Alamo Plaza

San Antonio, Texas

JUNIOR AGGIE 1029

PHOTOGRAPHY



Is the
Inseparable
Companion
of
Achievement



C. A. TAYLOR
Junior A. & M.
Photographer


Taylor's Studios
PHOTOGRAPHS
-that Live Forever
Fort Worth, Texas

JUNIOR AGGIE 1920

North Texas Agricultural College



A co-educational branch of the main A. & M. College of Texas. A vivacious young institution with an attractive program of study, play, and social diversion. A college that is growing in popularity with purposeful students of high ambitions.

E. E. DAVIS, *Dean*

NORTH TEXAS AGRICULTURAL COLLEGE
ARLINGTON, TEXAS

JUNIOR AGGIE 1020

GEORGE BEARD

FORT WORTH
OFFICIAL JEWELER
TO
N. T. A. C.

BOOST THE

“Aggie Boosters”

THEY ARE INTERESTED
IN YOUR
INTERESTS

READ THE ADS

L. A. BARNES
COMPANY

COMMERCIAL
STATIONERS

1009 Houston St. Fort Worth, Tex.

The
Farmer's National Bank

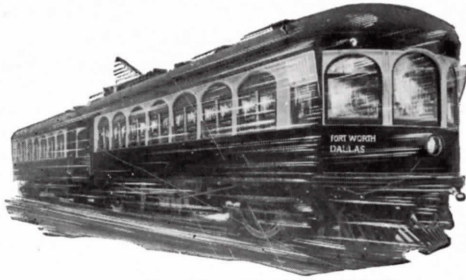
MEMBER
FEDERAL RESERVE SYSTEM

ARLINGTON TEXAS

We Invite Your Account

JUNIOR AGGIE 1020

North Texas Aggies!



FAST — ECONOMICAL

*Ride the
Deluxe*
INTERURBANS
on your trips
to Dallas
and Ft. Worth

Cars to Dallas leave Arlington every hour at 38 minutes after the hour from 6 a. m. to 12 p. m.

Cars to Fort Worth leave every hour at 53 minutes after the hour from 6 a. m. to 12 p. m.

North Texas Traction Co.



IT WAS the Chinese who started the piping of natural gas, in bamboo reeds centuries back. But it looked too miraculous to be true, so they stopped.

Texas, on the other hand, takes all the miracles it can get. Hundreds of Texas cities and towns use natural gas, from warming a baby's bath to running factories.

Arlington is one of them.

COUNTY GAS COMPANY

JUNIOR AGGIE 1020



ARLINGTON'S FAMOUS CARLSBAD MINERAL WATER

Arlington, The Coming Health Resort of the Southwest

MAKE ARLINGTON YOUR HOME

*Most "mileage" per dollar
is obtained from*

HERMAN'S SUPER SERVICE SHOES

Exhaustive War Department tests evolved the famous Munson last with attendant specification for high grade leathers and skilled workmanship—combined in Herman's Super-Service Shoes.

Over 4,000,000 pairs of Herman Shoes, many built on the Munson last have been bought by the U. S. Army, Navy and Marine Corps and given splendid service under every condition in practically every country.

Naturally, Herman's Shoes are famous for comfort, ease and foot protection as well as their long, satisfactory service at low cost "per mile."

JOSEPH M. HERMAN
SHOE COMPANY

BOSTON

MASSACHUSETTS



Herman's
Quality Shoe
No. 65



Herman's
Plain Toe
No. 42

JUNIOR AGGIE 1000

Arlington Steam Laundry

Efficient Laundry Service

DRY CLEANING
AND PRESSING

ARLINGTON

TEXAS

Stafford Engraving Co.

Sixth at Throckmorton—Ft. Worth

SHEET MUSIC

Wedding Invitations and Announcements

Mail orders given prompt attention.

Save With Safety at Your

REXALL DRUG STORE

WEBB BROTHERS

ARLINGTON, TEXAS

ROSE BROTHERS

REAL ESTATE
AND LOANS

ARLINGTON, TEXAS

*Two Best Places to Eat
—Home and the*

GOLDEN PHEASANT
RESTAURANT

1507 Commerce St. DALLAS, TEXAS

HALTOM'S

THE HOUSE OF
DIAMONDS

Main at Sixth FORT WORTH

Jewelers and Silversmiths

W. C. BOWMAN
LUMBER CO.

ALL KINDS OF BUILDING
MATERIAL

E. P. BROWNLEE

GROCERIES AND NOTIONS

*We cater to the students and the
members of the faculty.*

ARLINGTON
PLUMBING CO.

ARLINGTON, TEXAS

NORMAN
DRY GOODS CO.

"More for Less"

WHITTLE
EVERYTHING MUSICAL

1213 ELM ST. ~ DALLAS, TEX.

H. E. Cannon Nursery
& Floral Company

Growers of Selected Nursery Stock

Also Pot Plants and Cut Flowers
for All Occasions

Phone 236 Arlington, Texas

JUNIOR AGGIE 1020

BARBER SHOP
Opposite Lindbergh Hall
COME TO SEE US
W. A. McDONALD

Hair Cut 25c Shave 15c

KNAPP'S
Barber and Beauty Shop
Everything for N. T. A. C.

C. L. KNAPP ANNA DAVIS

J. S. ADKINS
Jeweler
WATCH AND JEWELRY
REPAIRING
We Sell the Spartan Radio

SLIM'S CAFE
*Just Across the Street from
Lindbergh Hall*
EVERYTHING TO EAT

CARTER &
COMPANY

*Hornets' Nest
For Six Years*

Let Us Service Your

for Economical Transportation



Thannisch Chevrolet Co.

ARLINGTON TEXAS

Cannon Brothers
Paint Co.
Paints from Factory Direct to You
WALL PAPER
PAINTERS' SUPPLIES
ARLINGTON TEXAS

Pittsburgh Plate Glass
Company
GLASS, MIRRORS
PAINTS
321-323 South Main Street
FORT WORTH, TEXAS

MONNIG - ROSE
COMPANY

FORT WORTH, TEXAS

Brundage Printing
Company

GRAND PRAIRIE, TEXAS

WE PRINT
THE SHORTHORN

Arlington Lumber Co.

GOOD BUILDING
MATERIAL

S. A. WILEY, *Manager*

Phone 46

Southern Ornamental

Iron Works

ARCHITECTURAL

IRON WORKS

ELEVATOR DOORS

Offices Dallas and Fort Worth

ARLINGTON TEXAS

JUNIOR AGGIE 1020

Griffiths & Co.

Lumber and Building
Specialties

HARDWOODS

*Creo-Dipt Shingles, Celotex Upson
Wall Boards, Sheet Rock*

DALLAS, TEXAS

First State Bank

ARLINGTON, TEXAS



THE COMMUNITY
BANK OF SERVICE

Preferably—

*King's
Chocolates*

for American Queens

*Sold by leading dealers
in each locality*

KING CANDY CO.

FORT WORTH

TEXAS

W. C. HIXSON

1610 Bryan Street
DALLAS, TEXAS

MEDART

Steel Lockers and Steel Shelving for
Schools, Colleges, Y. M. C. A.'s, Y. W.
C. A.'s, Office and Industrial Plants.

MEDART

Gymnasium and playground apparatus,
recognized as standard for 50 years.

WALRUS

Laboratory Furniture for Physics, Chemis-
try, Biology, Physiography, Domestic
Science, Domestic Art, Agriculture, Man-
ual Training, Drawing, Kindergarten.

MATTHEWS

Gas machines for furnishing heat for
science and domestic science.

SCHAAR

Laboratory apparatus and supplies for
Physics, Chemistry, Biology, Physiology,
Physiography, General Science.

*Catalogue Gladly Furnished
Upon Request*

JUNIOR AGGIE 1929

A BEAUTIFUL
AND PROGRESSIVE
DEPARTMENT
STORE
IN A BEAUTIFUL AND
PROGRESSIVE
CITY


*Always Pleased
To Serve
The Student*

MONNIG'S
FORT WORTH

Progressive Printing Company

CARDS
CATALOGUES
AND
THINGS

1207 Throckmorton Street
Dial 3-2574
FORT WORTH, TEXAS



**FORETHOUGHT
PLUS
INSURANCE
EQUALS
PROTECTION**

INSURANCE IS AN INVEST-
MENT IN WHICH YOU TAKE
NO RISK

**SOUTHERN UNION
LIFE INSURANCE CO.**

JAS. L. MISTROT **FORT** TOM POYNOR
PRESIDENT WORTH VICE PRESIDENT

Fashion

Points the way to "The Woman's Store," the home of modes for young women of distinctive taste. Whether you seek to make a purchase or simply wish to see the style, we cordially invite you to come in and go through all the different departments.

You will find every section of the store fully stocked with new merchandise, carefully selected, and brought to you under one roof for your critical inspection.

Come in and visit us often. We are glad to have you—always.

THE WOMAN'S STORE FAIR

The Store Every Woman Knows

Houston, Fifth, and Main

FORT WORTH

TEXAS

JUNIOR AGGIE 1020

The Arlington Journal

PERRY BROTHERS, *Publishers*

See Us for

"The Best Job Printing"

Phone No. 7

Insurance and Bonds

ALL KINDS
FIRE - LIFE - TORNADO
AUTOMOBILE, Etc.

"If its INSURANCE we write it."

Davis & Bondurant
AGENTS

Office: First State Bank Bldg.
Phone 52 ARLINGTON, TEXAS

R. W. McKNIGHT

Groceries and Meat

COUNTRY PRODUCE
FRUITS AND VEGETABLES

24 - Phones - 25

COULTER & SONS

Dependable Druggists

ARLINGTON, TEXAS

*We are glad to serve the students of
N. T. A. C., and our services are
at their command.*

FRESH AND CURED MEATS

Sandwiches and Hamburgers
Our Specialty

C. W. McKNIGHT

GROCERY AND MARKET

Telephones 4 and 5

Touchstone, Wight,
Gormley and Price

Attorneys and Counselors

Magnolia Building

DALLAS TEXAS

In Fort Worth or Dallas

*When You Are Looking for Good
Clothes for Less Follow the Crowd to*

Victory Wilson, Inc.

JAMES K. WILSON, *President*

IN NORTH TEXAS FOR

MILITARY
EQUIPMENT

IT IS

CARROLL'S

208 N. Akard St. Dallas, Texas

JUNIOR AGGIE 1000

A NOTE ABOUT "CIVIES" ADDRESSED
TO MILITARY MEN

All Society Brand Clothes have the Snug-Ease Sholder, assuring a smooth, snug effect at shoulders and neck. Exclusive with Society Brand. In Kahn's comprehensive showing of Society Brand Clothes there's every variation of the new and the good.

E. M. KAHN & CO.

Since 1873

MAIN AND ELM AT LAMAR DALLAS

CONGRATULATIONS

Pearlstone - Bolton
Company

DENTON AND McKINNEY
TEXAS

Wright Brothers
Garage

"WE MAY DOZE BUT WE
NEVER CLOSE"

Phone 300

*True Milk Bread is a
Product from flour select
Made by best methods,
clean and correct*

ARLINGTON, TEXAS



OXYGEN

And
Acetylene
Welding Apparatus
And Supplies

2-5701 321 W. 13th St.

Plant: 309 E. 23rd.

**BURDETT
OXYGEN CO.
OF TEXAS.**

SCENERY DRAPERIES
SCHOOL
AND AUDITORIUM
EQUIPMENT
OPERA CHAIRS
PROJECTION EQUIPMENT
and other necessary products that
make an auditorium complete

King Scenic Theater
Supply Co.

309 Harwood DALLAS, TEXAS

WHEN YOU THINK OF
SPORTS YOU NATURALLY
THINK OF

Trav Daniel Company

FORT WORTH

TEXAS

JUNIOR AGGIE 1920

SLAUGHTER MOTOR CO.

Authoriz. d **FORD** Dealers

CARS — TRUCKS

248 - Telephone - 249

L. D. 9502

Grapevine, Grand Prairie, Handley, Arlington.

Is Mary There?

OF COURSE she is! All week she has been looking forward to this "Long Distance date."

Girls appreciate such thoughtfulness. "Your Mary," too, will thrill at the sound of the telephone bell . . . will eagerly wait for your call. Station-to-station service makes it reasonable.* Just give the Long Distance operator the telephone number, or the name and address under which it is listed—but don't specify a particular person. If you give the number . . . it's quicker!



**You can talk a hundred miles for only 70 cents.*

SOUTHWESTERN BELL TELEPHONE COMPANY



SMART BUYERS

are ever on the alert for quality goods along with economy. Here one finds this particularly evident with every department cooperating.

MAY WE SERVE YOU IN THE SAME
CAPACITY

Huey & Philp Hardware Co.

DALLAS

TEXAS

JUNIOR AGGIE 1020

In the Early Summer - 1929

The New and Greater
SANGER BROS.

*will open its doors . . .
a tribute to a greater Fort Worth.*

Strong . . . Friendly . . . Helpful
Accommodating

A sincere interest in the financial progress of each depositor and a friendly desire to give every possible service are responsible for the consistent growth of this institution.

Commercial---Savings---Trust---Investments

OFFICERS

K. M. VAN ZANDT <i>President</i>	B. H. MARTIN <i>Vice-President</i>	ELMER RENFRO <i>Cashier</i>	W. E. WELCH <i>Asst. Cashier</i>
R. E. HARDING <i>Vice-President</i>	R. C. HEARNE <i>Vice-President</i>	K. V. JENNINGS <i>Asst. Vice-President</i>	C. W. BRASELTON <i>Asst. Cashier</i>
E. E. BEWLEY <i>Vice-President</i>	R. W. FENDER <i>Vice-President</i>	E. P. VAN ZANDT <i>Asst. Vice-President</i>	W. B. CAYCE <i>Asst. Cashier</i>
W. M. MASSIE <i>Vice-President</i>	GUY PRICE <i>Vice-President</i>	D. G. WEILER <i>Asst. Cashier</i>	S. O. HARTMAN <i>Asst. Cashier</i>

The Fort Worth National Bank

Established 1873

Main at Seventh

Fort Worth, Texas

UNITED STATES DEPOSITARY

The Arlington Rotary Club

The Arlington Rotary Club has its regular weekly luncheon at the Methodist Church at 12:15 every Thursday. Education, good fellowship, honesty in business and international peace through closer friendship and better understanding among the peoples of the world are its most cherished objectives. It is fostering and serving the interests of N. T. A. C. at all times.

Arlington Rotary Club, Arlington, Texas

JUNIOR AGGIE 1020

Autographs

Dear Thelma:

always remember me
as a true friend.

F. R. Harvey

Dear Thelma:

It has been a real
pleasure to know you,
you always speak and
smile which makes me
think more of you. You
are a real sport Thelma.

Remember me as a true
friend
Albert Gentry

Dear Thelma:

I shall always remember
you as one of my M. T. U. C.
friends. May you never
forget

Howard Taylor '29
Sulphur Spgs. Tex.

Dear Thelma:

It would be hard
for me to forget you.
Never forget yours
friend always

Dear Murray

Dearest Thelma:

It gives me much
pleasure to write in your
annual. Honey, I have
enjoyed being with you
this year. Don't forget - I
love you.

Estelle Woods
Dallas

5/19/29
Dear Thelma:
Remember me to
everyone.
Love,
Murray

Autographs

To, Thelma
you're quite and
been like you (we shook)
we all want ever girls
to be. "Good luck."
"Stuba"

Dearest Thelma:
I think we have
known each other practically
all our lives. throughout all
this time we have been good
friends and I have learned
to love you a lot. may you
always be the same sweet
little pinup girl that you are now.
Effie Smith

Dear Thelma:
I have well two short years
I must admit since I met you.
they will remain long in memory.
A friend
Lyon Woods.

Dear Thelma:
I think you stand
among the most
enjoyed in having a friend
like you. Always remember
me. You are always
the best!

Dearest Thelma,
I've always enjoyed
you as one of the sweetest
girls at school. The sweetest
thing I wish to you.
is to make it to you.
I hope you'll be
successful.

Dear Thelma,
I've enjoyed
your friendship very
much the past two years.
Please remember I like
you lots.
Pete Davis.

Darling Thelma:

I love
you just a Autographs
whole lot.

Please don't forget
our pleasant little
chats about every
body.

Love,
Ann H.

Dearest Thelma;

I've known you
pretty 'nigh all
my life. We've
had so many many
good times together
I hate to see you
going out into life.
Remember S.M.V. - A.M.
gamey & the fun
we had together.
Always remember
I love you.

Genevieve

Dearest Thelma
since we have mutual
friendships in P.S.M. class,

I feel that we are just
becoming close friends.
Hope you will be to
go to summer school.
Cause I can't pass
if you didn't sit at the
table with me -
you see you are
my inspiration!
Dobie & Joyce
Catherine Reading.

Dear Thelma:

Although I
have never been with
you much, I think
you are just as sweet
as you can be. I
have always wished
that I could be as
dignified and as nice
as you are.

Love -
Thelma

Dearest Thelma
we have been in
school together a long
time. I'll never forget
the first time I
saw you and knew
you as a friend.
I love you
I try.

Dearest Thelma -

I have enjoyed knowing
you a lot this year and
last year too. I hope our
friendship will continue after
school is out.

Dorothy McCarson

This is
share a
conglomerated
piece of literature.

This page humbly affectionately dedicated
to "our" friend (?) Taft Dunworth.

May 28, 1929.

Dearest Thelma Autographs

How can I say what I'd like
to when I am hampered by the
absence of my "sweetheart"? Anyway
I reckon you know and I know
and the whole world knows
jus' 'bout how much I've
learned to love you this year.
Later when you are so happy in
all; think of me and try
to remember that I tried to be
a friend to you.

When the day looks kinder gloomy,
And your chances kinder slim,
When all your thoughts are sad ones,
And things look bad and grim
'Member then how I tried to smile,
When I 'membered then of Him
and then you can laugh at him
how funny I wish it was.

JUNIOR AGGIE 100

Lots of love,
Natalie D.

I GUESS WE GOT IT BIRD.

Dear Thelma -

Believe it or not ^{Autographs} I have wanted to know you better ever since I first met you. I have liked you more than you ever realized. I mean as a friend? You are always smiling and friendly. I have enjoyed knowing you very much, and hope you will never forget an English class mate -

L.G. Meier "Dutch"
Mt. Pleasant.

Dearest Thelma: -

Friendship is a sacred name,
Engrave it on your heart;

In Friendship we have met
And in Friendship let us part.

Ralph E. Godwin Jr.

Dear Thelma:

I have enjoyed knowing you this year. I hope I have your friendship, you have mine. Remember me,

Russell

JUNIOR AGGIE 1020

Best wishes to Thelma for success in her
teaching career. Shall be happy to remember her
as one of the "Nine" in her red taffeta. She
has for three years been a dependable asset
in my chorus and my love goes with her.
Norma Chatham &

Dearest Thelma: -

I have enjoyed knowing you (this is
essential). Don't forget our trials in Biology and
chess tests. Remember a friend that thinks
"bushes and bushes" of you.

always,
C. Stelle

Thelma, someday when you're teaching
some youngsters, tu, de, re, mi's remember
the trials and pleasures of Pub. Sc. Mus. class
in N.Y.A.C. I have enjoyed teaching you and
I think you will make an excellent public
school music teacher.

Gertrude Mae McFadden

Dear Thelma:

As I have stated
before I have enjoyed
knowing you very much
and hope to see more of you.

Sincerely
Adolph Altmuch

Dearest Helma, I
have been a pleasure
to me to be in old
Ed. with you. I have
enjoyed our friendship
and wish you the
best of luck & happiness
With love, Angie.



**CERTAINLY-
SOUTHWESTERN
ENGRAVING COMPANY**

FORT WORTH
DALLAS
HOUSTON
BEAUMONT
WICHITA FALLS
AMARILLO
TULSA
ATLANTA
MACON

Dearest Shelma:

Really little girl I should know you after being with you in high school, college, etc. Indeed I have known you long enough to think you're awfully sweet and I like you lots!

Remember me sometimes when you think of school.
Steve Whitehead
Arlington, Texas.

Shelma -
The four years are about to end our school days, but not our ever lasting friendship. I can not express my gratitude of how you have made my school days at N.T.A.C. least so pleasant and non-regrettable in my
I am indeed indebted to you + another
Arlington friend for this year's success in my college life. As you know my definition for a fast friend - always and willing to Trenton every chance I get + another friend - your if possible - (300 S. Oak.)
Past + future friend -

Trenton
(Near - Dog Creek)

Dear Thelma:

There is no need of me telling you that I have enjoyed your acquaintance and your association during the past two years. I shall always regard you as an of my sincere friend in this school. In fact Thelma, you have been a companionable friend to me this year. I hope that you shall not be to sad to recall your N.S.C. memories, and I hope when you shall be so happy (with Jack) that you will scarcely find time to ever think of your own self. and liked you as one who has always admired until (death do us part) I sincerely a true friend
Edward M. Maffey
(The Marcel Kid)

