



JUNIOR AGGIE
1930

Dearest Elizabeth:
 I've a lovely time
 here. Don't forget to know
 English classes and I won't
 forget those comforting words
 you gave me one Sunday night
 when I was scared. member? I hope
 you have Anna Lane ^{Barrett}
 can you ever forget
 those hours of practice?
 No, can I ever forget
 our friendship. Good luck
 to you, dear. Remember
 Natalie Davis.

Dearest Elizabeth:
 Honey, I have enjoyed you and
 friendship a lot this year. We
 have had some happy times
 together and then some "nervous"
 times had "oodles" of fuss. I shall
 never forget our visit to your
 home. Good luck, little girl, and
 lots of love from your
 Mildred Anne Yearby.

Dear Elizabeth -
 I have enjoyed knowing you and
 being in class with you. I shall
 always remember you as a very sweet
 little girl. Luck + success to you.
 I shall
 in your friends.
 Jonnie Greenfield
 Haven't we had fun this term
 Love.
 True Williams
 Dallas, Texas

Dear Liz:

This school year has come and gone but I hope we may continue our friendship forever. Even though I am dumb at the game I have had greatly enjoyed the great amount of luck, success and happiness in incidents of your life. I hope this is not a good-bye for always to see you back next year. A town full of joy and school days for just a year. I hope you will remember one who will meet again.

Dear Liz - Have enjoyed knowing you so much. Wish you 'kissability'. I'm sure you think me for when you love you make a whole new person. This summer I hope you always be for just a year.



Dear Liz:

Don't forget our hilliona times together in short-hand classes. Also remember our good times at the dances. I have enjoyed knowing you and think that you are a very sweet little girl. Here's hoping for you for all the success and happiness in the world. As ever,

Besides being a cute little child - a young so nice to know - a baby just keep on being sweet.

Ernest (GAG) Godfrey, Jr.

Dear Elizabeth,
It has been a
pleasure to know
you. Please don't
forget me as I
shall like to be
remembered as one
of your friends in
N. D. A. C.

Lots of love to you,
Mary Ellen Wilkins

Dear Elizabeth:
I have just enjoyed
knowing you so much,
both as a schoolmate
and avolente. I really
think that you're a
cute sweet little girl
Lots of love - and
always remember
Frances Whitcomb
7+ worth.

Dear Elizabeth,
I surely has been a
pleasure to know you.
I have enjoyed being in
classes with you this
year. I hope you will
always remember me
as a friend
Eugenia Rynier
El Paso, Texas

Dear Liz:
Even if I did say I didn't like
the way you acted I think a
lot of you and hope you think
a little of me. Forget everything
I said and remember me
if you can. Hope you are
happy and successful all your
life.
Bob Caperton
Shaurock.

130
Liz
knowing you
has been a pleasure
& I love you both
David & Rose
I'll be there
Dearest Liz:
I will never forget
how I admired you & how
first time I saw you & how
badly I wanted you to
be long to me etc.
I sure you will
love you
Greta
remember Ina Handley
asa Fish '30

Dearest Elizabeth:
never could I forget
you - In connection
with our treat that
we gave Grand Prairie
one night - If you don't
make a wonderful
bit everywhere you
go - it won't be be-
cause you don't have
the friends & backing -
remember Ina Handley
asa Fish '30

Elizabeth Dear,

It's been a pleasure to know you. I have especially enjoyed being in your gym. classes. Please don't forget

Norma Hall
Jewett Texas

Dearest Elizabeth

It has indeed been a pleasure to have known you this year. Now please don't ever forget me as one of your friends W.G.C. Frickada.

Kathleen Howls



Dearest Elizabeth:

Since the last week in August 1929 I've been knowing one of the sweetest cutest girls I've ever known. It has been a pleasure to be associated with you and an honor to be counted as one of your friends. I hope we shall always be pals (even if I can't drive and you can.) Always Remember
Delma Brewer
Arlington, Texas.

Handwritten signatures and notes in cursive script, including names like 'Delma Brewer' and 'Elizabeth'.

JUNIOR AGGIE
1930



JUNIOR AGGIE
1930

Published by the Students of the
NORTH TEXAS AGRICULTURAL COLLEGE
ARLINGTON, TEXAS



CONTENTS

CLASSES

STUDENT LIFE

MILITARY

FAVORITES

ATHLETICS

ORGANIZATIONS



FOREWORD

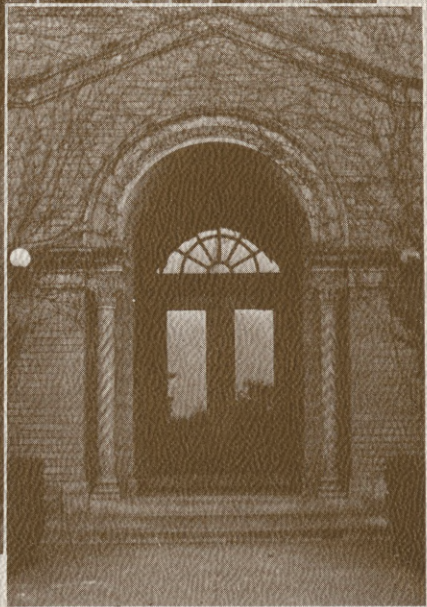
*We present here a record of the past year
in which we, as young sculptors, have been
chiseling the foundations for our lives.*

DEDICATION

The eighth volume of the Junior Aggie is dedicated to the cause of honest work—work which distinguishes the towering buildings that scoff at time from those that have long since crumbled to dust; work which distinguishes that worthier group of students who are building for themselves characters that are staunch, true and fine from those who are building, with less enduring qualities, foundations that will not stand the test of life.

*To the last
night we were
together and
to your health,
success, and
happiness, and
determination.*

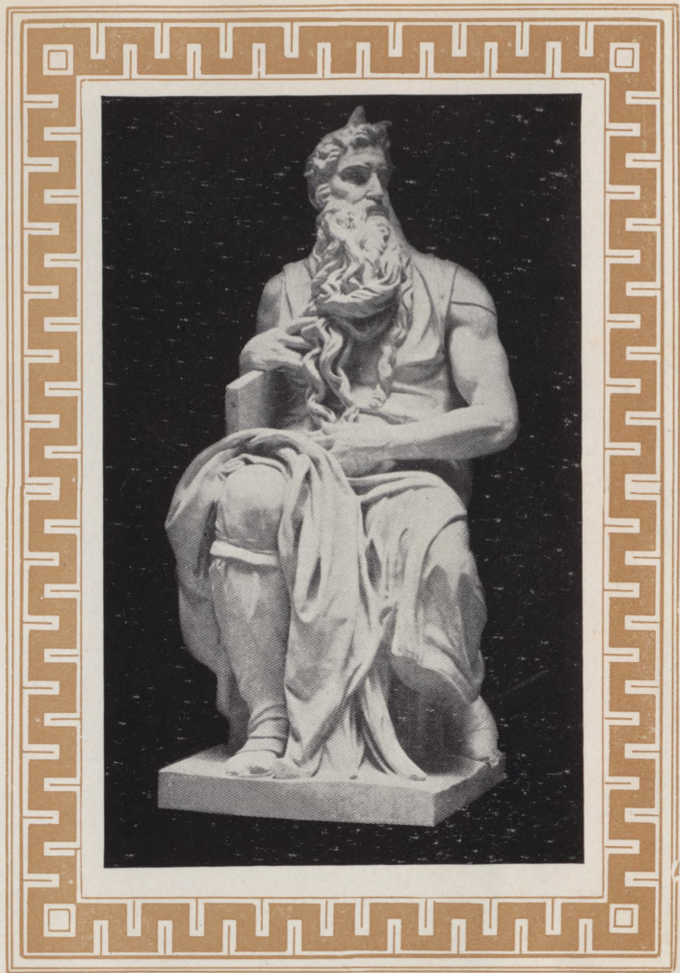
*Love -
Jack W.*











MOSES

From a colossal statue of marble in Rome
By MICHEAL ANGELO, Florentine, 1475-1564

EXECUTIVES



T. O. WALTON

The Class of 1930 of the North Texas Agricultural College, through The Junior Aggie, places before the students and former students of the institution an outline of its record of accomplishment. The publication has for its general theme architectural designs. The Class has builded well during the year and it is leaving as its contribution a record of tasks accomplished and duties performed efficiently.

Editorially, The Junior Aggie leaves in permanent form the outstanding accomplishments of the members of the Class. Pictorially, it presents buildings and scenes familiar to the student body which afford stimulus to class pride for those who follow to strive for high ideals and worthy accomplishments. College students are builders in the fullest meaning of the term, but like those who build with stone, brick and mortar, they must have a plan for their lives and must build to the plan. Such has been the purpose of the Class of 1930 and their record of accomplishment justifies the conclusion that their planning has been wise and the execution of the plans has measured up to the highest standards.

T. O. WALTON
The President



DEAN DAVIS
Architects

There is no excuse for failure, if one be endowed with a good body and sound intelligence. The day of opportunity was never half so bright or inviting as it is now. The hour is high noon. The clock of the gods is striking twelve. The fit and the capable are happily and industriously at their tasks. In their tasks they are happy, for they have found their places in the world. Congratulations to those of the N. T. A. C. student body of 1930 who have definitely established worthy purposes in life. All hail to each and every one of you. You are constructing for yourselves mansions of glory resplendent with the richest joys known to the souls of men. Every man is the architect of his own fortune. Fate and destiny have little to do with the mark one makes for himself in the world. There are no lucky stars.

Most cordially,
E. E. DAVIS
Dean



ASSOCIATE DEAN DICKEY

All of those young men and young women who are sincerely in quest of knowledge command the respect of all socially minded people. They must have courage and perseverance, for the road to the goal we call education is long, tortuous and rugged. To negotiate it they must have endurance with which to travel its length, perspective with which to keep themselves out of the ditch of non-essentials, and a reserve of nervous energy with which to mount the abrupt elevations of complexity. Those who have the qualities essential to a successful journey on this most scenic highway will find four delicious fruits bending the branches of the trees which beautify the landscape on the right and left: (1) The capacity to be useful to their fellowmen, (2) numerous opportunities to be serviceable to society, (3) a handsome reward of abundant happiness, (4) a liberal financial reward for services rendered mankind. Ignorance, the only curse that has ever been visited upon man, is the only detour on this magnificent highway. The detour leads over precipices into darkness, disappointment, death. You are to be congratulated upon having undertaken the task of advancing your intellectual horizon. May your efforts be fruitful as long as the spirit of service abides within you.

GEO. L. DICKEY, M. S.
Associate Dean



W. H. SLAY
Fort Worth

S. O. ROWE
Fort Worth

N. L. DAVIS
Arlington

O. O. TOUCHSTONE
Dallas

THE LOCAL BOARD OF CONTROL

The Local Board of Control is composed of four men who are interested in the progress and advancement of North Texas Agricultural College. The members are local business men appointed by the Governor of Texas. The purpose and function of this Board is to work jointly with the Board of Directors of other Agricultural and Mechanical Colleges of Texas. This Board of Control submits all matters for approval to the Board of Directors at College Station. The members are interested in seeing this college progress for the benefit of those students whose lives are being influenced by the North Texas Agricultural College.



DEAN E. E. DAVIS
D. A. BICKEL

GEO. L. DICKEY
W. L. HUGHES

MISS INA LIPSCOMB
W. A. RANSOM

C. C. RIGNEY

J. E. HUDSPETH

EXECUTIVE COMMITTEE

The Executive Committee is composed of members of the faculty. It is the highest ranking unit in the college. The committee advises with the Dean on such matters as curriculum, regulations, admissions and social activities. It also carries out the policies of the A. & M. system. Its members are at all times ready to help the student. They are constantly executing plans which will benefit the student individually as well as the entire student body.



FACULTY

JONNIE ARNOLD
Secretary to Business Manager

ETHEL BARBER
Associate Professor of Foods
B.S., College of Industrial Arts

J. M. BARCUS
Professor of Chemistry
B.A., Baylor University

B. C. BARNES
Associate Professor of Commercial Arts
B.S., Bowling Green College of Commerce

D. A. BICKEL
Professor of Education
B.S., M.A., Missouri University
Registrar

JOSEPHINE BRAMLETTE
Assistant Professor of English
B.A., M.A., University of Texas

ROY W. BURDETT
Associate Professor of Mechanics and Related Subjects
Texas University

MRS. W. CHAMBERLAIN
Professor of Clothing
B.S., College of Industrial Arts; M. A., Southern Methodist University

NORMA CHATHAM
Professor of Music
New York University, Cincinnati Conservatory of Music, Texas University



FACULTY

MRS. DELLA DAVIS
Instructor in Power Sewing Machine

E. E. DAVIS
Dean of College
B.A., M.A., Texas University

GEO. L. DICKEY
*Professor of Psychology and
Sociology; Associate Dean*
B.S., M.S., Texas Agricultural
and Mechanical College

H. A. D. DUNSWORTH
Associate Professor of Mathematics
B.S., North Texas State Teachers
College; M.A., Southern Methodist
University

ETHIE EAGLETON
Associate Professor of History
B.A., Texas University

FRED ERHARD
*Professor of Machine Shops and
Assistant Instructor in Mechanical
Engineering*
Texas Agricultural and Mechanical
College

W. A. FAGAN
Instructor in Welding

MRS. JENNIE FLOYD
*Associate Professor of Business
Administration*
B.S., Ohio University; M.A.,
Southern Methodist University

W. E. HOLLINGSWORTH
*Professor of Drawing and
Woodwork*
B.S., University of Texas



FACULTY

J. E. HUDSPETH
Business Manager
Professor of Commercial Arts
 B.A., North Texas Teachers' College

OPAL HUMPHREYS
Librarian
 B.A., Baylor College

O. L. KILLIAN
Professor of Biology
 B.A., M.A., Texas University

MRS. W. L. HUGHES
Associate Professor of Physical
Training
 B.S., Southwest State Teachers' College

CHRISTINE FOWLER
Secretary of Engineering and
Trades Department

M. B. LEBO
Professor of Horticulture
 B.S., Agricultural and Mechanical College

MR. W. L. HUGHES
Professor of Biology
 B.S., Texas Agricultural and Mechanical College

D. A. KIBER
Professor of Agriculture
 B.S., M.S., Texas Agricultural and Mechanical College

INA LIPSCOMB
Dean of Women, Associate Professor of Education
 B.A., Sam Houston State Teachers' College



*Hope you will
return to the
J.A.C. and
be one of the
singers
again -
Gertrude Mae McFadden*

Roscoe Owens

FACULTY

ED. L. LOCKHART
*Associate Professor of Auto
Mechanics*

OTTIE LYON
Secretary to the Dean

C. A. MCCOMBS
*Professor of Mathematics
B.S., M.A., Peabody College*

GERTRUDE MAE MCFADDEN
*Associate Professor of Music
B. Music, Texas Womans' College;
New York University*

J. C. MOORE
*Professor of Physical Training for
Men
B.S., North Texas State Teachers'
College*

ROSCOE OWENS
Associate Professor of Drawing

MARTYE POINDEXTER
*Associate Professor of Applied Arts
North Texas State Teachers' Col-
lege; University of Chicago*

JOE B. PRESTON
*Professor of History
B.A., Park College; M.A., Texas
University*

ZELDA RAMSEY
*Associate Professor of Business
Administration
B.B.A., B. A., Texas University*



FACULTY

W. A. RANSOM
Professor of English
 B.A., M.A., Kansas University

MYRTLE RAWLS
Professor of Modern Languages
 B.A., Southern Methodist University

C. C. RIGNEY
Director of Engineering and Trades
 B.S., Alabama Polytechnic Institute

DUNCAN W. ROBINSON
Assistant Professor of English
 B.A., North Texas State Teachers'
 College

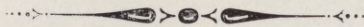
M. C. STONE
Assistant Director of Trades

J. T. SUMMERHILL
Professor of English
 B.A., Baylor University; M.A.,
 Southern Methodist University

PEARL THOMPSON
*Secretary to Associate Dean
 and Registrar*

W. L. WATSON
Professor of Business Administration
 B.S., B.C.S., Bowling Green Busi-
 ness University

MRS. NORA ZEIGLER
Associate Professor of English
 B.A., Baylor University; M. A.
 Southern Methodist University



Meet Studios girl.

By Leah



Meet Studios Boy

STUDENTS

Dear Hel Aevolente Sister;

You seem to be closer to
me somehow for we gave
our Aevolente Party Together

and you have been a good

friend although you

have griped at times. You are

a darling girl and I want you

to know I'm your true friend always

Yours
Gwen



NIKE OF SAMOTHRACE.
(Winged Victory)

IV Century, Greek—From a marble in the Louvre

SENIORS

AARON, VERNA LUCILLE, *Arlington*

"She was so shy, so shy."

Commercial Arts Club

ALVERSON, VIRGINIA, *Dallas*

"Diversity, that is my motto."

Girls' Doubles Team (Tennis), '29; Vice-President, Phi Kappa Theta, '30; Shorthorn Staff, '29, Annual Staff, '29, '30; Sans Souci, '29, '30; String Ensemble, '28; Dallas Club, '28, '29; President, W. A. A.

BELLAMY, JESS D., *Arlington*

"Why, then, do you walk as if you had swallowed a ramrod?"

First Lieutenant, Company D, '29, '30; First Sergeant, Company D, '28; Best Drilled Company, '28, '29; Officers' Club, '28; Sergeant's Club, '28; Commercial Club, '29; Bull Pen Society, '28, '29, '30;

BIGLEY, CHARLES LEROY, *Fort Worth*

"Moping melancholy,
And moon-struck-madness."

First Lieutenant, Band, '29; Captain, Band, '30; Assistant Band Director, '29; Basketball, '28, '29, '30; Vice-President, Fort Worth Club, '29; Secretary, "T" Club, '29, '30; Engineering Club, '29; Officers' Club, '29, '30; Orchestra, '28, '29; Bugler, '30.

BRADFORD, MARY ALICE, *Arlington*

"So I stay at home with a book."

Household Arts Club

BRUMMETT, EUGENE H., *Grand Prairie*

"Thy modesty's a candle to thy merit."

First Sergeant, Company D, '29; Second Lieutenant, Company D, '29; First Lieutenant, Company C, '29; Captain, Company C, '30; Officers' Club, '29, '30; Athenian Club, '30; Bull Pen Society, '28, '29; Sergeants' Club, '28.

COOPER, JUANITA FRANCES, *Fort Worth*

"But she was bound the roost to rule."

DAHNIKE, ANGIE, *Grand Prairie*

"The desire to please everything having eyes
seems inborn in maidens."

Household Arts Club, '30; W. A. A., '29, '30; Junior Aggie Staff, '29; Art Editor, Junior Aggie, '30.

DAVIS, NATALEE, *Arlington*

"The light that lies in a womans eyes,
And lies, and lies, and lies, and lies."

Junior Aggie Staff, '30; W. A. A., '30; Household Arts Club, '29; Athenian Club, '30; President, La Docena Club, '30; Treble Cleff Club, '29, '30; Mixed Chorus, '30.

DUKE, PALMA JEAN, *Handley*

"A countenance more in sorrow than in anger."

Avolente Club, '30; W. A. A., '30; Fort Worth Club, '29.



FOX, JEFF STANLEY, *Decatur*

"He makes no friends of sorrows."

Sergeant, Band, '30; Sergeants' Club, '30; Engineering Society, '30.

GENTRY, ELBERT, *Fort Worth*

*"The ways are fair to his roaming feet,
And the skies are sunlit for him."*

Second Lieutenant, '30; Adjutant, '30; Sergeant, '29; Best Drilled Company, '28; Letter Track, '29; Reserve Football, '29; Secretary and Treasurer, Engineers' Club, '30; Secretary and Treasurer, Senior Class, '30.

GREER, GENEVIEVE, *Arlington*

"Take life too seriously, and what is it worth?"

W. A. A., '29, '30; Secretary and Treasurer, Avolente Club, '30; Treble Clef Club, '30; Mixed Chorus, '30.

GREGORY, COSTON L., *Handley*

No, I am not, as others are."

Second Lieutenant, Band, '30; Officers' Club, '30; Bull Pen Society, '30; Engineering Society, '30; Fort Worth Club, '30.

HAHN, MARTHA JANE, *Arlington*

*"And she had a thousand virtues and
not one acknowledged sin."*

Household Arts Club, '29; President, Avolente Club, '30; Vice-President, W. A. A., '30.

HARVEY, FRANCIS REGINALD, *Arlington*

*"I've lived my life as I found it,
And I've done my best to be good."*

Football, '29; Golf Team, '29; Tennis, '30.

HATTER, JOE RAY, *Waco*

*"Looking past the clover,
Adding up the hay."*

First Sergeant, Company C, '30; Secretary-Treasurer, Hoof and Plow Club, '30; Sergeants' Club, '30; Livestock Judging Team, '30.

HERRING, RUBY BERNICE, *Mineral Wells*

"I shudder at the thought of men."

Household Arts Club, '29, '30; Treble Clef Club, '29, '30; Commercial Club, '29, '30; W. A. A., '29, '30.

HIETT, ANN, *Arlington*

"The eternal feminine draws us on."

La Docena Club, '29, '30; Household Arts Club, '29, '30; President, Treble Clef Club, '30; Mixed Chorus, '29, '30; W. A. A., '29, '30; Mixed Quartette, '29.

HOLLINGSWORTH, DORRIS, *Grapevine*

"My heart is turn'd to stone."

Pre-Med Club, '29; Company Band, '29, '30.





HOLLIS, A. L., *Paducah*

"My modesty will excuse the wantoning of my eyes."

HUDSPETH, BONNIE BURNS, *Arlington*

*"A clever man builds a city,
A clever woman lays one low."*

W. A. A., '29, '30; Tennis Champion, Singles and
Doubles, '30; Annual Staff, '30; President, Phi Kappa
Theta, '30; Avolente, '30; Household Arts Club, '29;
Treble Clef Club, '29, '30.

HULL, URSULA IRENE, *Fort Worth*

"Sue tells her love what he's thinking of."

Avolente Club, '29, '30; W. A. A., '29, '30; President,
Household Arts Club, '30; Fort Worth Club, '30.

ILLINGSWORTH, RONALD H., *Dallas*

"All-innocent are you, and yet all-wise."

Phi Kappa Theta, '30; Dallas Club, '30; Bull Pen
Society, '30; Engineering Society, '30.

JOHNS, LOLA MORRIS, *Fort Worth*

*"God has given you one face, and you make yourself
another."*

Household Arts Club, '29, '30; Treble Clef Club, '30;
W. A. A., '29; Fort Worth Club, '28, '29.

JOINER, ELIZABETH M., *Arlington*

"Whistle and I'll come to you, my lad."

Vice-President, San Souci Club, '30; Treasurer, W.
A. A., '30; Vice-President, Household Arts Club, '30.

JACKSON, GRANT A., *Comanche, Oklahoma*

"He rattles at a pace that nothing mars."

Sergeant, Band, '30; Captain, Tennis Team, '30;
Business Manager, Junior Aggie, '30; President, Tennis
Club, '30; Sergeants' Club, '30; Vice-President, Com-
mercial Club, '29.

JONES, DAVID HOOD, *Dallas*

"For the demon lurked under the angel in me."

Best Drilled Squad, '29; Most Efficient Company, '29;
Golf, '29; Dallas Club, '30; Bull Pen Society, '30;
Commercial Club, '30.

KEITH, CELETA, *Arlington*

"I'll dig at my lettuce, and sweep my floor."

Junior Aggie Staff, '30; Household Arts Club, '30;
Athenian Club, '30.

KINGSTON, WILENA, *Arlington*

*"I could not love thee, dear, so much
Were I not born to be in Dutch."*

La Docena Club, '29, '30; Household Arts Club, '29,
'30; W. A. A., '29, '30.



*Sincerely
Celeta*



KOTT, LORENE, *Jewett*

"What a woman can do, and a woman can dare!"

Sans Souci Club, '29, '30; W. A. A., '29, '30; Vice-President, Treble Clef Club, '30; Mixed Chorus, '30.

LANGDON, BONNIE LEA, *Fort Worth*

"You look about you; and all you see is fair."

Phi Kappa Theta, '30; Secretary, W. A. A., '30; Shorthorn Staff, '29; Annual Staff, '30; Girls' Singles Team (Tennis); Fort Worth Club, '29.

LANGDON, MARIAN, *Crosby*

*"She walks up the walk
Like a woman in a dream."*

Household Arts Club, '29, '30.

LENNEN, ENERGY LESLIE, *Electra*

"Trouble rides behind and gallops with him."

Major of Bull Ring, '29; Engineering Society, '29, '30; Secretary, Legion of Condemned, '30.

MASON, J. I., *Vernon*

*"He seemed
For dignity compos'd and high exploit."*

Best Drilled Company, '29.

McMAINS, D. M., *Dallas*

*"All my griefs to this are jolly
Naught so damned as melancholy."*

Captain, Company D, '30; Captain, Rifle Team, '30; Most Efficient Company, '29; Crack Squad, '29; Best Drilled Squad, '29; Shorthorn Staff, '30; Reporter, Commercial Club, '30; Dallas Club, '29; Bull Pen Society, '29, '30; Aggie Melody Men, '30; Officers' Club, '30; Individual Drill Competition, '29.

McMURRAY, CHARLES E., *Dallas*

"I want free life and I want fresh air."

Crack Squad, '29; Most Efficient Company, '29; Bull Pen Society, '30; Dallas Club, '29; Officers' Club, '30; Engineering Society, '30; Military Editor, Junior Aggie, '30.

NASH, ELIZABETH MILDRED, *Mansfield*

"Promise is most given when the least is said."

Household Arts Club, '30; W. A. A., '29, '30.

NORMAN, NOBLE, *Fort Worth*

"Of all the thunderous ages, you're the heir."

Reserve in Track, '29; Debating, '29; Sports Editor, Shorthorn, '30; Athenian Club, '30.

NOWLAIN, L. T., *Grand Prairie*

"The ladies call him sweet."

Second Lieutenant, Company C, '29, '30; Track Team, '29; Officers' Club, '29, '30; Bull Pen Society, '30.



OWEN, DONNA MAE, *Dallas*

*"But I, despite expert advice,
Keep doing things I think are nice."*

Phi Kappa Theta, '29, '30; President, San Souci Club, '30; Dallas Club, '29; Household Arts Club, '29; Shorthorn Staff, '29; Junior Aggie Staff, '29, '30.

PAYNE, WALTER H., *Dallas*

*"To blow is not to play on the flute;
You must move the fingers."*

First Lieutenant, '30; Color Sergeant, '29; Rifle Team, '29; Athenian Club, '30; Officers' Club, '30; Commercial Club, '30; Sergeants' Club, '29; Yell Leader, '29.

PENDER, ROY GARNETT, *Dallas*

"And so far, I've had no complaints."

Captain, Company A, '30; Rifle Team, '29, '30; Most Efficient Company, '29; Crack Squad, '29; Shorthorn Staff, '29, '30; Dallas Club, '29; Secretary, Aggie Melody Men, '30; Officers' Club, '30; Commercial Club, '30; Bull Pen Society, '30; Third Place, Individual Competition, '29.

PETERSON, ROBERT O., *Lexington*

*"Ye wot no man so wise is born
That keeps his wisdom constantly."*

Cadet Major, '30 Captain, Company B, '29; Commanded Best Drilled Company, '29; Selected Most Efficient Officer, '29; Winner, Frank Brothers Trophy, '29; Editor, Shorthorn, '30; State Champion Orator, '29; Officers' Club, '29, '30; Aggie Melody Men, '30; President, Phi Kappa Theta, '29; President, Athenian Club, '29.

POLLARD, ELIZABETH LAURA, *Dallas*

"Low, gurgling laughter."

Treble Clef Club, '29, '30; Dallas Club, '29.

ROGERS, OPAL A., *Dallas*

"Whatever is, is good, your gracious creed."

Household Arts Club, '30; Dallas Club, '29.

ROGERS, OPAL L., *Dallas*

"Let me perish—to rescue some wretched young man."

Commercial Club, '30; W. A. A., '30.

ROUSE, WILLIAM T., *Arlington*

"You have the sort of face that suits a woman."

SESSIONS, CARL E., *Wells*

"Ignorance never settled a question."

First Sergeant, Band, '29, '30; Debate Team, '29, '30; Night Librarian, '29, '30; Athenian Club, '28, '29, '30.

SMITH, EFFIE, *Arlington*

"But oh, what a good girl am I!"

Sans Souci Club, '29, '30; Household Arts Club, '30; W. A. A., '30.



SMITH, GARLAND AUBREY, *Caldwell*

"A happy accident."

Sergeant, Band, '30; Orchestra, '29, '30; Band, '29, '30; Band Quartette, '30; Athenian Club, '30; Sergeants' Club, '30; Assistant Band Director, '30.

SMITH, JEFFERSON DAVIS, *Midlothian*

"He salted the earth with the sweat of his brow."

President, Hoof and Plow Club, '30; Live Stock Judging Team, '30; Reporter, Shorthorn, '30.

STEWART, CORNELIA FAYE, *Arlington*

"Yours the white rapture of a winged soul."

Household Arts Club, '29, '30.

STUART, JOHN JAMES, *Dallas*

*"Four be the things I'd been better without
Love, curiosity, freckles and doubt."*

Most Efficient Company, '29; Corporal, Company D, '29; Rifle Team, '29, '30; Dallas Club, '29; Bull Pen Society, '29, '30; Engineering Society, '29; Aggie Melody Men, '30.

TAYLOR, HOWARD E., *Sulphur Springs*

"Faultlessly fickle, and yet fond enough."

Lieutenant, Band, '30; Athenian Club, '29; Phi Kappa Theta, '30; Glee Club, '29; Aggie Melody Men, '30; Mixed Chorus, '30; Assistant Band Director, '30; College Orchestra, '30; Band Quartette, '30; Lead in "Mikado," '29.

TAYLOR, JOSEPH WESLEY, *Fort Worth*

"Little pitchers have wide ears."

Most Efficient Sergeant, '29; Best Drilled Company, '28, '29; Letter, Football, '28; Vice-President, Engineering Society, '30; Vice-President, T-Society, '30; President, Senior Class, '30; Phi Kappa Theta, '30.

TODD, ESTELLE, *Grand Prairie*

"To make a mountain or a mole-hill."

Secretary and Treasurer, Household Arts Club, '30; Commercial Club, '29, '30; W. A. A., '29, '30.

WALKER, NAOMA JO, *Fort Worth*

"My soul would glory in its own despair."

Letter in W. A. A., '29; Avolente Club, '29, '30; Fort Worth Club, '29; W. A. A., '29, '30; Chorus, '29.

WELLER, NEAL, *Malakoff*

"Men are the cause of women not loving one another."

First Sergeant, Company A, '29; Second Lieutenant, Company A, '30; Basketball, '29, '30; Captain Football, '29; President, Engineering Club, '30; President, "T" Association, '30; Officers' Club, '30.

WHEATLEY, NELLA VIRGINIA, *Haskell*

*"From her pen dripped romantic rhapsodies
In yellow organdie."*

Household Arts Club, '30; Athenian Club, '30; W. A. A., '30.



WIGGINS, LEVIS C., *South Bend*

*I flounder through life
And I'm always in love."*

First Lieutenant, Company B, '29; Second Lieutenant, Company A, '30; Best Drilled Company, '29; Letter Track, '29; Business Manager, Shorthorn, '30; No Demerit Honor Roll; Honor Roll, '28; Commercial Club, '29; DeMolay Club, '29; Vice President, Pre-Medical Club, '29; Officers' Club, '29, '30; Boys' Glee Club, '30.

WILLIS, FANNIE MAE, *Mansfield*

*"Yet when was beauty held more rare
Than simple heart and maiden modesty?"*

Letter in basketball; Editor, Junior Aggie, '30; Art Editor, Junior Aggie, '29; Phi Kappa Theta, '27, '28, '29, '30; Household Arts Club, '27, '28.

WILSON, GRACE ELON, *Fort Worth*

"For my part, give me common sense."

Household Arts Club, '39; Fort Worth Club, '29; W. A. A., '30.

WITHERSPOON, MILDRED, *Grand Prairie*

*"Happy art thou, as if every day thou hadst picked up a
Horseshoe."*

Household Arts Club

WOOD, WILLIAM, *Richards*

*"Come back in half an hour or so,
And I will be in trouble."*

General





MILITARY COURAGE

By PAUL DUBOIS, French, 1829. Cast from
bronze original.

JUNIORS



ADAMS, MARY ELLEN
Breckenridge, Texas

ADDISON, CARL I.
Dallas, Texas

ASHCRAFT, THOMAS E.
Rogers, Texas

ATOR, JULIUS B.
San Antonio, Texas

BAKER, JAMES D.
Moody, Texas

BALL DOROTHY
New Boston, Texas

BALL, CLAUDE R.
Arlington, Texas

BARTON, RUTH
Sweetwater, Texas

BASSETT, VERONA
Dallas, Texas

BATES, J. D.
Caldwell, Texas

BELT, ALTA RAE
Milano, Texas

BENNETT, ANNA LOU
Arlington, Texas

BLAIR, ORA MAE
Handley, Texas

BLACKBURN, HERMAN P.
Handley, Texas

BRAGG, MANSELL
Rochester, Texas

BROOK, J. E.
Rosebud, Texas

BROWER, DELMA
Arlington, Texas

BUSH, ELIZABETH
McKinney, Texas

*Save
Dulby*

*Orphan -
Anna Mae
Bennett*

BUSSEY, THETA, Senior
Handley, Texas

CANNON, WILLIS L.
Fort Worth, Texas

CHAPMAN, BARBARA
Fort Worth, Texa.

CARRUTH, GLENN
Miami, Texas

CEARLEY, JOHN
Post, Texas

CELY, JACK C.
Frankston, Texas

CARMICHAEL, CLYDE
Fort Worth, Texas

CLAYTON, ARCHIE
Big Spring, Texas

CHRISTMAN, FRED
Arlington, Texas

COTTER, OBIE
Foss, Oklahoma

COX, BEVERLY
Handley, Texas

DICKEY, ELIZABETH
Dodd City, Texas

DUDERSTADT, GERTRUDE
Arlington, Texas

DUNN, JASPER W.
Grand Prairie, Texas

DUVALL, JUAL L.
Grand Prairie, Texas

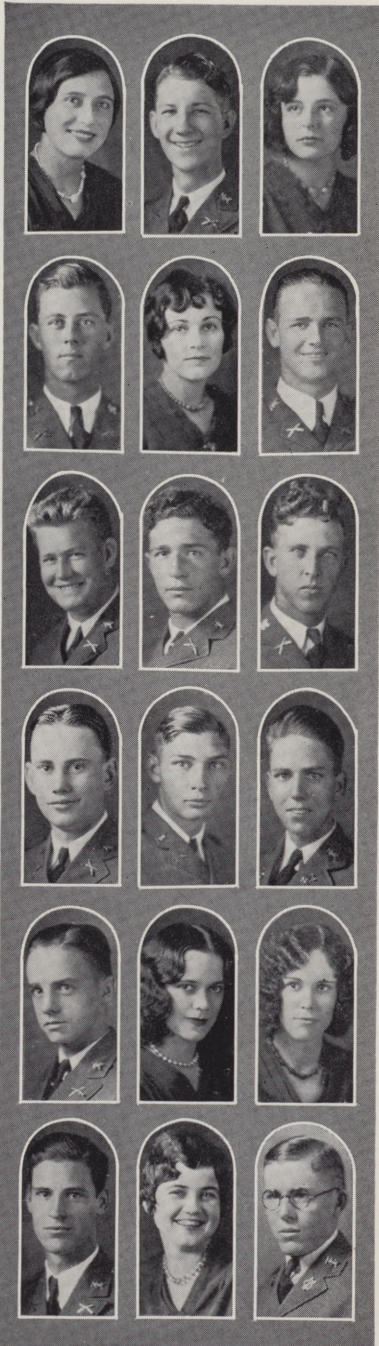
ERWIN, JOHN
Ladonia, Texas

EVAN, DOYLE
Olney, Texas

FAITH, DOUGLAS
Decatur, Texas



Handwritten note: Freda Christman



FORD, THELMA JO
Dallas, Texas

FOSTER, CLARENCE
Arlington, Texas

FISHER, MARY FRANCES
Fort Worth, Texas

FRANKS, LAFAYETTE
Dallas, Texas

GRAF, HAZEL MAE
Arlington, Texas

GRAY, JACK
Wills Point, Texas

HERNDON, JAMES
Dallas, Texas

GROVES, GEORGE
Dallas, Texas

HALL, HAROLD
Kirkland, Texas

HALL, Q. S.
Goree, Texas

HALL, HORACE
Grand Prairie, Texas

HAMPTON, THOMAS
Memphis, Texas

HAMILTON, EDWIN
Tuscola, Texas

HASKELL, MARY FERN
Dallas, Texas

HAYES, ANICE
Mansfield, Texas

HEAD, HOMER
Dallas, Texas

HENDERSON, EUNICE
Grapevine, Texas

HESTER, IRA T.
Haskell, Texas

HEATH, THOMAS
Arlington, Texas

HOLLINGSWORTH, HELEN
Grapevine, Texas

HERNDON, G. C.
Fort Worth, Texas

GRAVELY, P. T.
Carrollton, Texas

HOOD, DOROTHY LEE
Arlington, Texas

HOUSE, HANNAH ANN
Mansfield, Texas

HAGEDORN, B. H.
Dallas, Texas

HARRIS, CHARLES
Pilot Point, Texas

HOUSTON, R. H.
Arlington, Texas

HOWLE, KATHLEEN
Decatur, Texas

HYNDS, RAY
Claude, Texas

JARED, FRANK W.
Dallas, Texas

JOHNSON, J. W.
Grapevine, Texas

KEARBY, MILDRED ANN
Arlington, Texas

KEARBY, NEIL
Mineral Wells, Texas

KOTT, NORMA
Jewett, Texas

LACY, WILLIAM C.
Henderson, Texas

LANGDON, DOROTHY
Crosby, Texas





LANIER, ELLIS
Arlington, Texas

LANIER, WILLIS
Arlington, Texas

LATIMER, ELIZABETH
Port Arthur, Texas

LESLIE, L. B.
Grand Prairie, Texas

LEONARD, J. PERRY
Fort Worth, Texas

LILLEY, HARVEY
Conroe, Texas

LIPSCOMB, VERNON
Fort Worth, Texas

LONG, WILLIAM C.
Rockwall, Texas

LOONEY, WILLIAM W.
Calvert, Texas

KNOTT, J. R.
Kemp, Texas

MAAG, ORVILLE
Wichita Falls, Texas

MALAISE, GEORGE
Handley, Texas

MATHIS, LOLA
Waxahachie, Texas

MCWHORTER, TOD
Douglasville, Texas

MCDANIEL, AILEEN
Arlington, Texas

MILES, BURTON
Memphis, Texas

MILLER, RUTH
Dallas, Texas

MOORE, EDNA
Arlington, Texas

MONCRIEF, J. M.
Dallas, Texas

MARKS, EMORY
Houston, Texas

McCOY, DOROTHY
Arlington, Texas

NASH, MARGUERITE
Mansfield, Texas

NORMAN, ADENA
Rule, Texas

PARR, RAYMOND
Handley, Texas

PARKER, MARGARET
Handley, Texas

PARKER, ROBERT
Kemp, Texas

PATTERSON, LESTER
Merkel, Texas

PEARCE, JESSE
Burleson, Texas

PRATHER, OPAL
Smithville, Texas

RANDOLPH, MARGARET
Dallas, Texas

READ, HARREL T.
Memphis, Texas

REYNOLDS, CLARENCE
Frisco, Texas

ROBISON, WILLIAM W.
Naples, Texas

RODDY, EDITH
Lancaster, Texas

ROACH, SEARS P.
Fort Worth, Texas

RIGNEY, EUGENIA
Arlington, Texas





ROARK, ARTHUR C.
Arlington, Texas

RUDD, MARVIN S.
Goldthwaite, Texas

STILES, JOHN W.
Annona, Texas

SUMMERS, S. S.
Fort Worth, Texas

SIMONS, JOHN T.
Fort Worth, Texas

SIMMONS, J. T.
Grapevine, Texas

SHAW, ARNOLD
Rhome, Texas

SLAUGHTER, RAYMOND
Arlington, Texas

SMART, SHIRLEY
Handley, Texas

SMITH, MARY
Arlington, Texas

SPEIGHT, HAROLD
Handley, Texas

STRAWN, CHARLES
Grand Prairie, Texas

TERRELL, ROBERT
Fort Worth, Texas

TILFORD, HENRY M.
Fort Worth, Texas

TUCKER, DARRELL I.
Arlington, Texas

TURNER, WILLIAM
Smithfield, Texas

UNDERWOOD, C. W.
Denton, Texas

VICKERY, MARY IONE
Arlington, Texas

WADDELL, JESSIE
Grand Prairie, Texas

WHEELER, LOWELL H.
Fort Worth, Texas

WILDER, MAURICE
Arlington, Texas

WILLIAMS, L. D.
Spur, Texas

WOOD, THURMAN
Richland Springs, Texas

WORTHAM, WILLIAM
Fort Worth, Texas

WARREN, JOHN C.
Dallas, Texas

WEBSTER, LON
Memphis, Texas

WHITEHURST, FRANCES
Fort Worth, Texas

YOUNG, FRANCIS H.
Henderson, Texas

WISEMAN, JOHN
Covington, Texas

BLACK, HORACE
Dallas, Texas

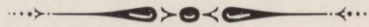
HAMIL, BENITA
Mansfield, Texas

HUFFHINES, ELMER
Richardson, Texas

HUGHES, J. L.
Fort Worth, Texas

ROBINSON, ESTHER RUTH
Grapevine, Texas







DAVID
By Verrocchio in Bargello-Florence

SUB-COLLEGE



ALLISON, JOSIE RUTH
Cedar Hill, Texas

BARGER, EUGENE
Lillian, Texas

BARTON, CLAY K.
Malakoff, Texas

BAXTER, ROBERT
Shamrock, Texas

BROTHERS, FLOYD
Bonham, Texas

BROWN, GLENN C.
Bradshaw, Texas

BUFORD, DOROTHY
Dallas, Texas

Robert DAVIS, J. P.
Davis, Oklahoma

DIX, ROBERT R.
Dallas, Texas

FARRAR, MARY
Texarkana, Texas

FULFORD, WARREN
Fort Worth, Texas

GEESLIN, FRANCES
Arlington, Texas

GODFREY, GLOVER
Dallas, Texas

GREGORY, CHARLIE
Arlington, Texas

GRAVELY, THURMOND
Carrollton, Texas

HALL, CHARLES
Grand Prairie, Texas

HASKELL, LEROY
Dallas, Texas

HICKS, FREDDIE
Rochester, Texas



HOOD, SAM
Emory, Texas

HUDSON, VERNON
Goodnight, Texas

HUNT, JULIAN
Oakwood, Texas

HURLEY, CAREY
Tulsa, Oklahoma

JOHNS, ELLIS
El Paso, Texas

JOHNSTON, ALMA
Arlington, Texas

KACZMAREK, LOUIS
Panna Maria, Texas

KENNEDY, CHARLINE
Fort Worth, Texas

KNOTT, J. R.
Kemp, Texas

MATHIS, LOLA
Waxahachie, Texas

MCCOOL, LUCIAN H.
Grand Prairie, Texas

MILLER, WILLIE E.
Fort Worth, Texas

MITCHELL, CORDELL
Midlothian, Texas

OWENS, A. C.
Three Rivers, Texas

PARKER, RAYMOND
Kemp, Texas

PASS, LAMAR
Heidenheimer, Texas

SHULL, JOHN W.
Dallas, Texas

SMITH, GORDON
Clyde, Texas





SMITH, WILLIAM L.
Midlothian, Texas

SNIDER, BOWMAN
Arlington, Texas

TISDALE, TED
Tuscola, Texas

STOCKTON, WALKER
Fort Worth, Texas

TIDWELL, ALLYNE
Cedar Hill, Texas

STEPHENS, JOHN S.
Dallas, Texas

TROUTT, ROY S.
Bonham, Texas

TURPIN, VIRGINIA
Arlington, Texas

WATSON, EDWARD
Streetman, Texas

WELLS, CHARLES F.
Rogers, Texas

WILSON, DAROLD
Arlington, Texas

WISE, JACK
Luling, Texas

ANDERSON, TOWNSEND
Mercedes, Texas

COLLINS, THOMAS G.
Grand Prairie, Texas

GONZALES, MARIO
Havana, Cuba

HENEGAR, J. B.
Gordon, Texas

PEACOCK, EUGENE
Wichita Falls, Texas

SMITH, AUBREY
Fort Worth, Texas

VAUGHAN, WILL A.
Rosewood, Texas

PEACOCK



THE HAMMERMAN

(Bronze)

By CONSTANTIN MUNIER, Belgian, 1831-1905

CO-OPS



ALLDAY, H. W.
Arlington, Texas

BARBER, RICHARD
Killeen, Texas

BARKER, ORVAL C.
Jenning, Texas

BARRETT, HOWARD F.
Hamlin, Texas

BRUBAKER, ROBERT
Waldler, Texas

BURKE, VIRGIL Z.
Midland, Texas

BURNETT, GERALD C.
Canton, Texas

BURNETT, J. H.
Canton, Texas

CARLOCK, FLOYD
Joshua, Texas

CARPENTER, JEWEL
Arlington, Texas

CAWTHON, HAROLD BEN
Bullard, Texas

CHEEK, MARVIN
Bullard, Texas

COFFEY, JOHN S.
Sulphur Springs, Texas

COLLINS, TOM S.
Arlington, Texas

CROMARTIE, TWAIN J.
Till, Texas

CROMER, HERBY
Gordon, Texas

CRUCE, CARROLL
Monticello, Arkansas

DEMPSEY, T. R.
Childress, Texas

DRAKE, CARSON
Lewisville, Texas

DUDERSTADT, MURRAY
Arlington, Texas

DUROSS, CLARENCE
Fort Worth, Texas

EDDLEMAN, R. W.
Pilot Point, Texas

EDMONDS, FRAZIER
Dallas, Texas

ELORE, JOHN A.
Pilot Point, Texas

EVERETT, W. H.
Burnett, Texas

FARMER, JAMES R.
Linden, Texas

FELLMY, GUY
Snyder, Texas

FINCH, J. S.
Chatfield, Texas

FOSTER, L. E.
Red Oak, Texas

FRY, LEWIS M.
Leonard, Texas

GARNER, CARL B.
Gladewater, Texas

GATES, FRANKLIN
Little, Texas

GODFREY, GORDON
Gladewater, Texas

GOODE, W. B.
Fort Worth, Texas

GRACEY, CLYDE
Dallas, Texas

GRAY, MARY ELIZABETH
Dallas, Texas





GUTHRIE, DAVE
Italy, Texas

HARMEL, OLIVER
Plainview, Texas

HARPER, JOHNSON I.
Cushing, Texas

HARPER, JOHN M.
Chatfield, Texas

HARRIS, HOMER
Argyle, Texas

HARTIN, ANNIE BELLE
Arlington, Texas

HOOKS, ARLIE C.
Onalaska, Texas

HOPSON, OTHA B.
Woodville, Texas

JETER, B. L.
Bridgeport, Texas

JETER, WAYNE
Kilgore, Texas

JOINER, W. M.
Arlington, Texas

JONES, R. A.
Paducah, Texas

JOHNSON, WANETTA
Fort Worth, Texas

KELL, RAYMOND
Red Oak, Texas

KNUDSON, JAMES S.
Cranfills Gap, Texas

KUYKENDALL, JOHN O.
Canton, Texas

KYLE, ROBERT H.
Pilot Point, Texas

LIPS, ORGALD
Heidenheimer, Texas



LOWE, CECIL C.
Orth, Texas

LOWANCE, RAY
Decatur, Texas

MAGERS, MARY LUCRETA
Arlington, Texas

MARVIN, ROY G.
Fort Worth, Texas

MASERANG, MICHEL M.
Mansfield, Texas

MCIVER, ROGER F.
Guion, Texas

MCQUARRY, BARNEY A.
Kennedale, Texas

MILLER, C. H.
Fort Worth, Texas

MOODY, HENRY H.
Arlington, Texas

MOODY, HERSCHEL J.
Arlington, Texas

MOORE, EMMETT
Arlington, Texas

MOORE, LEROY
Dallas, Texas

MOUSER, HOMER F.
Cedar Hill, Texas

ORGAN, OLA
Thorndale, Texas

PHILLIPS, MILTON
Bullard, Texas

POLK, LEON
Santa Anna, Texas

PRITCHETT, HAMP
Dallas, Texas

QUINN, J. C.
Arlington, Texas





RAY, CECIL L.
Fort Worth, Texas

REESE, F. L.
Corpus Christi, Texas

RINEY, WINFRED
Pilot Point, Texas

ROLLINS, C. J.
Handley, Texas

ROYAL, R. C.
Claude, Texas

SHAFFER, CECIL L.
Caddo, Texas

SHEFFIELD, C. R.
Onalaska, Texas

SNODGRASS, KEISTER
Celina, Texas

SIMPSON, HANSEL
Gunter, Texas

SIMPSON, LEWIS
Dodd City, Texas

SPALDING, HENRY R.
Neches, Texas

SMITH, HAMDEN C.
Fort Worth, Texas

SMITH, HUGH
Arlington, Texas

SMITH, TRAVIS
Eliasville, Texas

SMITH, WESLEY
Longview, Texas

STALCUP, WILLIAM H.
Sulphur Springs, Texas

STANLEY, JOE B.
Bullard, Texas

STOCKTON, FREDERICK
Fort Worth, Texas

STOKER, JOY A.
Weatherford, Texas

STROUD, ARTHUR J.
Thornton, Texas

STRICKLAND, L. G.
Algerita, Texas

SWANK, AUBREY J.
Gordon, Texas

THOMAS, SCRANTON B.
Arlington, Texas

TINER, HARRY P.
Seagoville, Texas

VANDERPOOL, CHARLES
Plainview, Texas

WATKINS THURMAN
Grand Prairie, Texas

WILLIAMSON, MARION F.
Athens, Texas

WILLIS, IRENE
Arlington, Texas

ADAMS, MARY ELLEN
Breckenridge, Texas

BIGGERS, EVA
Arlington, Texas

CHRISTOPHER, M. C.
Arlington, Texas

GROGAN, MARJORIE
Arlington, Texas

JONES, ERNA JANE
Fort Worth, Texas

MAYES, HAZEL
Loraine, Texas

MITCHELL, RUSSELLE
Arlington, Texas

MOSELEY, EDWARD I.
Fort Worth, Texas





NASH, EDNA PEARL
Mansfield, Texas

RUDD, STELLA MARIE
Arlington, Texas

TUCKER, ROBERTA
Arlington, Texas

VANDAVEER, THEO
Arlington, Texas

WILSON, MRS. LUCILLE
Arlington, Texas

ZUEFELDT, JONNIE
Arlington, Texas

BARKER, RICHARD
Killeen, Texas

BOYDSTON, NOBLE
Fort Stockton, Texas

DOBBS, MARIE
Arlington, Texas

KILPATRICK, BESSIE
Arlington, Texas

KILPATRICK, RUTH
Arlington, Texas

RUSSELL, MRS. LUCY
Grand Prairie, Texas

SHEIL, MRS. ANGIELINE
Fort Worth, Texas

SISSON, MRS. BEULAH
Arlington, Texas

WEEKS, MRS. AGNES
Arlington, Texas

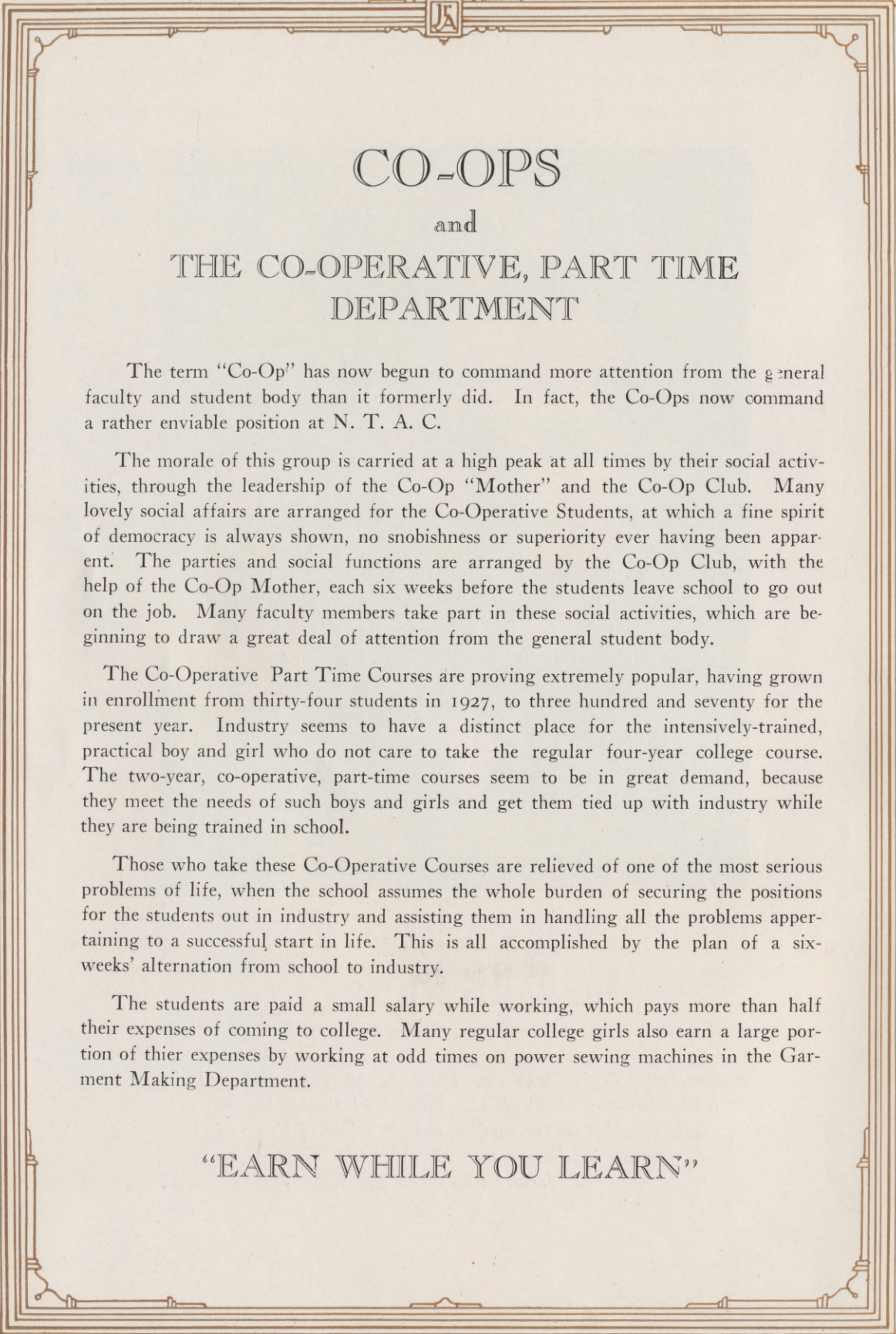


In Memory Of

HOWARD JOHNSON

LYTLE, TEXAS

a co-operative Senior, who was killed in an automobile collision while attending N. T. A. C. Johnson's influence is continually missed from our campus, but the values of his worthy life are indelibly graven on the hearts of Co-Ops and faculty who knew him best.



CO-OPS

and

THE CO-OPERATIVE, PART TIME DEPARTMENT

The term "Co-Op" has now begun to command more attention from the general faculty and student body than it formerly did. In fact, the Co-Ops now command a rather enviable position at N. T. A. C.

The morale of this group is carried at a high peak at all times by their social activities, through the leadership of the Co-Op "Mother" and the Co-Op Club. Many lovely social affairs are arranged for the Co-Operative Students, at which a fine spirit of democracy is always shown, no snobishness or superiority ever having been apparent. The parties and social functions are arranged by the Co-Op Club, with the help of the Co-Op Mother, each six weeks before the students leave school to go out on the job. Many faculty members take part in these social activities, which are beginning to draw a great deal of attention from the general student body.

The Co-Operative Part Time Courses are proving extremely popular, having grown in enrollment from thirty-four students in 1927, to three hundred and seventy for the present year. Industry seems to have a distinct place for the intensively-trained, practical boy and girl who do not care to take the regular four-year college course. The two-year, co-operative, part-time courses seem to be in great demand, because they meet the needs of such boys and girls and get them tied up with industry while they are being trained in school.

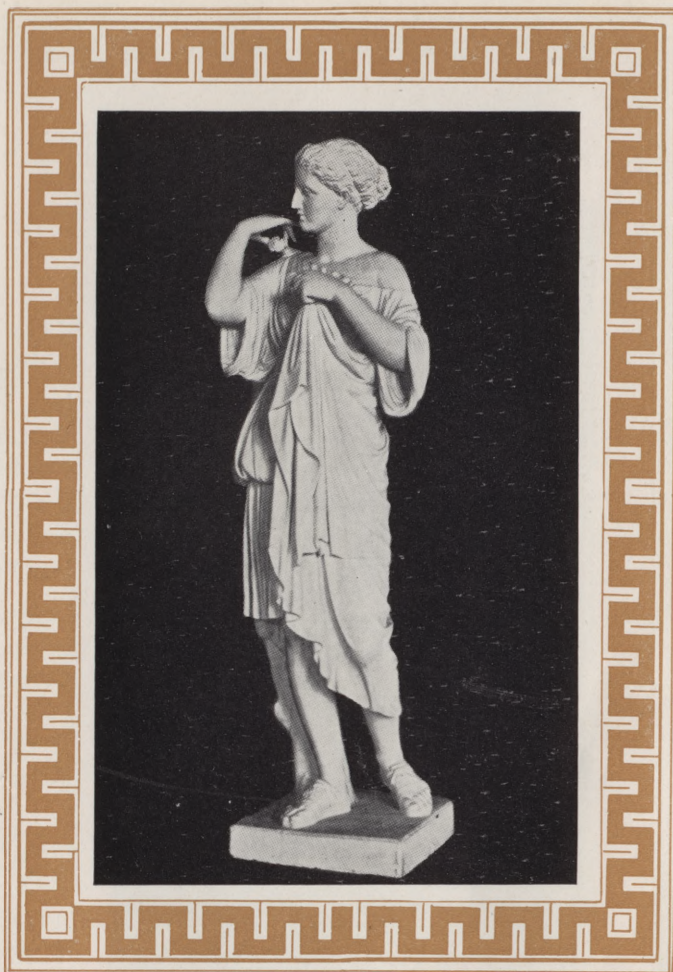
Those who take these Co-Operative Courses are relieved of one of the most serious problems of life, when the school assumes the whole burden of securing the positions for the students out in industry and assisting them in handling all the problems appertaining to a successful start in life. This is all accomplished by the plan of a six-weeks' alternation from school to industry.

The students are paid a small salary while working, which pays more than half their expenses of coming to college. Many regular college girls also earn a large portion of their expenses by working at odd times on power sewing machines in the Garment Making Department.

"EARN WHILE YOU LEARN"



STUDENT LIFE



THE DIANA OF GABII

From a Marble Copy of a work by PRAXITELES
IV Century, B. C.

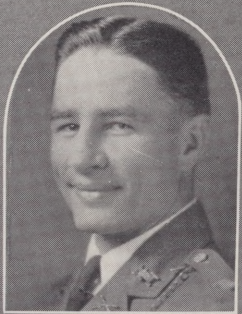
ACTIVITIES

One-Act Play Contest

The players who represented the college in the one-act play contest, held February 15 at Paris, were Christine Fowler, Edward Maxey, Violet Richardson and Robert Peterson. This contest was sponsored by the Texas Junior College Public Speaking Association.

Mr. W. A. Ransom directed the group at the following presentations: Christmas Banquet, December 18; Yale Chronicle, January 21; Polytechnic High School, Ft. Worth, February 11; Sunset High School, Dallas, February 12; Ft. Worth Woman's Club Auditorium, May 4; and at the opening of the New Municipal Building in Arlington.

Great ovations were extended the N. T. A. C. players each time they staged the one-act comedy, "Poor Old Jim."



EDWARD MAXEY

CHRISTINE FOWLER

ROBERT PETERSON

VIOLET RICHARDSON

Oration

Oratory enjoyed a banner year at the College in 1929 with Robert Peterson climaxing the season by winning the state junior college championship at the annual junior college tourney held at Clifton in May. Miss Merle McCool, co-ed representative, won first place in the district meet and finished third in the state meet.

Robert Peterson's oration was built on a plea for world peace, and was delivered with a quiet dignity and a force of conviction that appealed to the audience. Miss McCool's speech was based on the need of educational reform and was well delivered at the various contests.

Debating enjoyed a revival at the college in 1929. Burton Miles and Noble Norman, with Carl Sessions as alternate, were chosen to represent the Aggies, and they defeated Weatherford College to win the district championship. In Miles and Norman the college had a well-balanced team. Miles was especially effective in rebuttals.

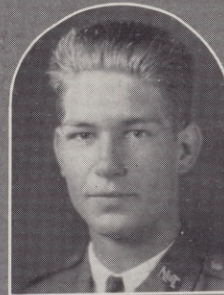
Both Miles and Norman are back this year and have already turned in a victory over the Jefferson School of Law of Dallas. Duncan Robinson of the English department coached the orators and debates in 1929 and is serving in this capacity again this year.

MERLE MCCOOL

CARL SESSIONS

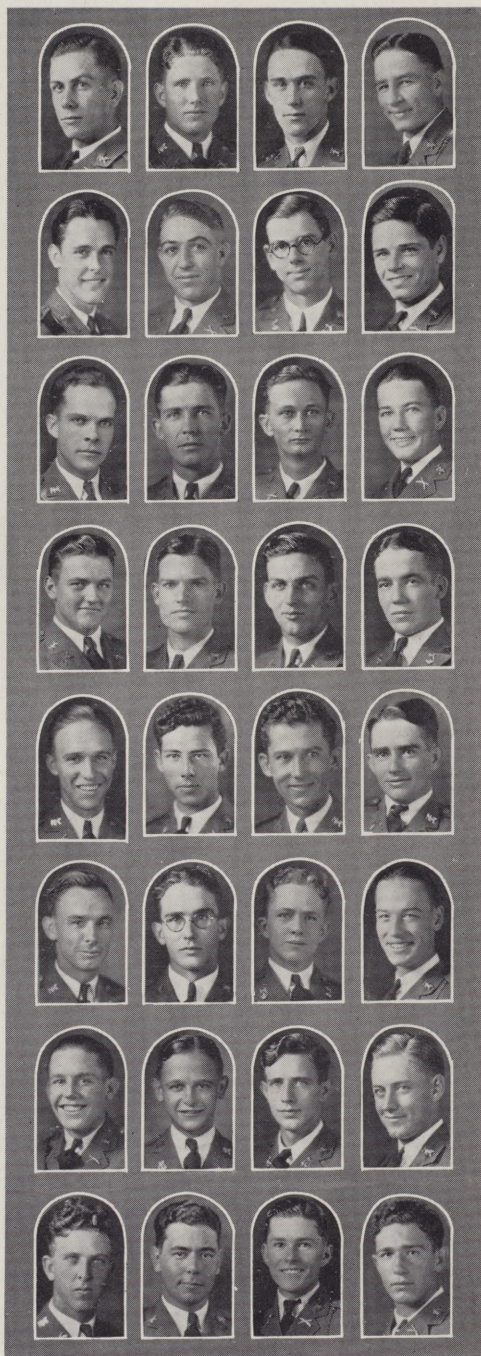
NOBLE NORMAN

BURTON MILES



Aggie Melody Men

When forty lively men gather to enjoy themselves for an hour, they usually call themselves "The Glee Club," but according to the group at North Texas Agricultural College they call themselves "The Aggie Melody Men" because they are "Aggies" and "Melody Men." Under the able direction of Miss Norma Chatham, with the assistance of Miss Mae McFadden as accompanist, the "Aggie Melody Men" have developed into an excellent Glee Club. They have made several out of town trips and presented programs in assembly on various occasions. The officers of the club are: Howard Taylor, president; Walter Payne, vice president; Roy Pender, secretary-treasurer; L. T. Nowlain, business manager; Julian Hunt, reporter.



JOE TAYLOR
L. T. NOWLAIN
WALTER PAYNE
ROBERT PETERSON

ROY PENDER
PERRY LEONARD
EUGENE PEACOCK
JASPER DUNN

ROBERT CAPERTON
J. M. MONCRIEF
GLENN CARRUTH
L. H. MCCOOL

THOMAS COLLINS
JOHN STUART
JACK SHULL
LON WEBSTER

L. B. LESLIE
HORACE BLACK
EMORY MARKS
TOD MCWHORTER

JACK WISE
THOMAS HEATH
TED READ
LEVIS WIGGINS

D. M. MCMAINS
MARVIN RUDD
JULIAN HUNT
GLENN BROWNE

HAROLD HALL
J. B. ATOR
JESS BELLAMY
GEORGE GROVES

The Treble Clef Club

The Treble Clef Club is a choral organization for the girls of the college and at the present time the membership numbers thirty. Since its organization in 1923, this group has appeared on many programs for schools and clubs locally as well as in Fort Worth and Dallas. Miss Norma Chatham was the organizer and is director of the Treble Clef Club and Miss Gertrude Mae McFadden is the accompanist. It is clubs of this type that help to place North Texas Agricultural College in the vanguard of Junior Colleges in the state.

ANN HEITT

LORENE KOTT

MILDRED ANN KIRBY

ELIZABETH LATIMER

BONNIE HUDSPETH

ELIZABETH BUSH

DOROTH BEUFORD

BEVERLY COX

BERNICE HERRING

FRANCES GEESLIN

ELIZABETH POLLARD

GENEVIEVE GREER

HANNAH ANN HOUSE

MAURICE JOHNS

HELEN HOLLINGSWORTH

EUGENIA RIGNEY

HAZLE MAY GRAFF

EDNA MOORE

DELMA BROWER

DOROTHY McCOY

NATALIE DAVIS

MARY IONE VICKERY

FREDA CHRISTMAN

KATHLEEN HOWLE





The Junior Aggie

The Junior Aggie, the annual publication of North Texas Agricultural College, is published by the students with the aid of faculty advisors. The Junior Aggie staff is composed of students who are interested in journalistic work and are competent in this field. The staff plans the book so that it will be interesting, and excite in future years memories of school life in future years, besides furnishing many hours of pleasant enjoyment at the present time. If these things are effected, then the staff will have accomplished its purpose.



FANNIE MAE WILLIS, *Editor*
GRANT JACKSON, *Business Manager*

MISS MARTYE POINDEXTER, *Art Sponsor*
ORVILLE MAAG, *Athletic Editor*
ANGIE DAHNKE, *Art Editor*

VIRGINIA ALVERSON, *Club Editor*
CELETA KEITH, *Art Editor*
BONNIE HUDSPETH, *Faculty Editor*

DONNA MAE OWEN, *Fun Editor*
SHIRLEY SMART, *Art Editor*
NATALEE DAVIS, *Feature Editor*

CHARLES McMURRAY, *Military Editor*
BONNIE LEA LANGDON, *Class Editor*
MR. W. L. WATSON, *Business Sponsor*

MISS JOSEPHINE BRAMLETTE, *Editorial Sponsor*

The Shorthorn

The Shorthorn is a weekly publication of North Texas Agricultural College. It was first published in 1919 as a monthly magazine and continued as such until 1922 when it was converted into a weekly newspaper. The circulation of the paper has rapidly increased during recent years because of the successful fulfillment of its aims.

The purposes of the Shorthorn are to record the many college events throughout the year, to inform the student body to these events, to teach the reporters the principles of journalism, and to furnish amusement to the students and faculty.

ROBERT PETERSON, *Editor*

LEVIS WIGGINS, *Business Manager*

ROY PENDER

GROVER GODFREY

MILDRED ANNE KEARBY

HAZEL MAE GRAF

HERMAN HAGEDORN

RAY HYNDS

ELIZABETH LATIMER

ORVILLE MAAG

EDITH RODDY

J. D. SMITH

NOBLE NORMAN

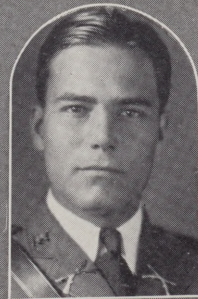
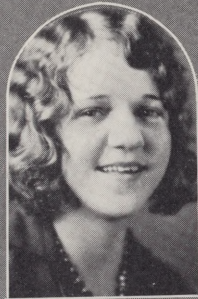
MR. W. L. WATSON, *Business Sponsor*

MR. W. A. RANSOM, *Editorial Sponsor*



Scholarship

Last year a plan was introduced by the Phi Kappa Theta Club through which the students would take more interest in scholarly achievements. A contest was conducted among all the students of different courses. The winners were determined by the grade points they made. The winning group of students of the various departments is entertained by the losing group. The students, individually, who made the highest number of grade points, are rewarded by having their pictures put in the Junior Aggie. The student making the highest number of grade points has his picture placed in the Hall of Fame.

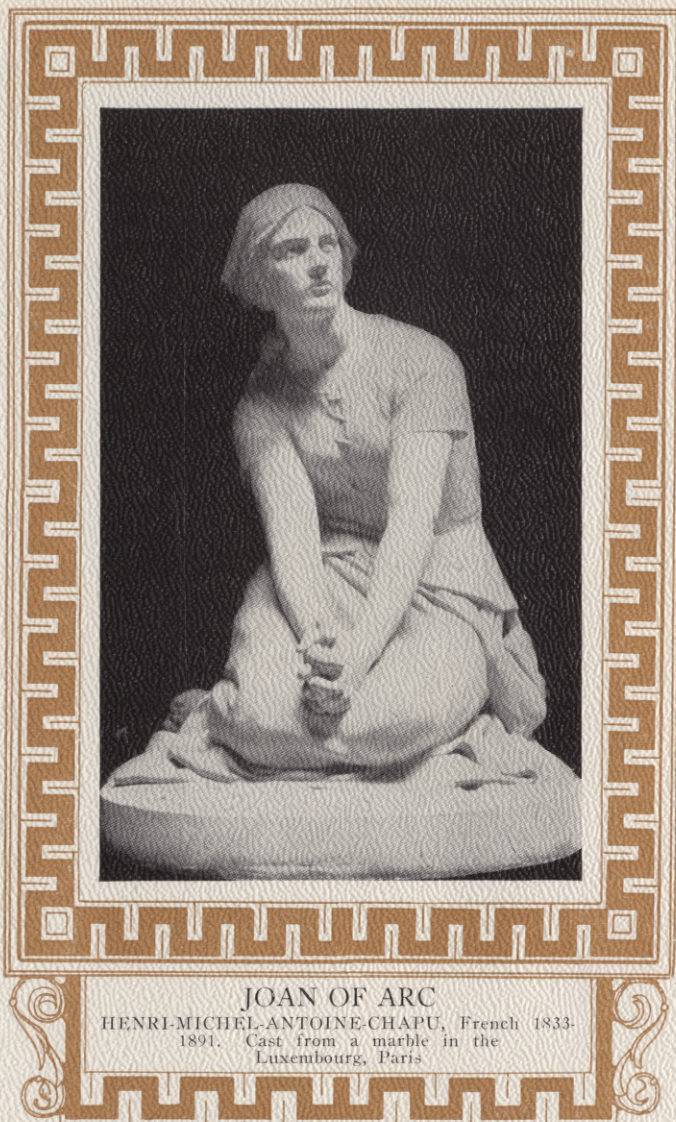


EUGENIA NICKS

EDITH HAMILTON

RUFIE D. THRASH

ORVILLE MAAG



JOAN OF ARC
HENRI-MICHEL-ANTOINE-CHAPU, French 1833-
1891. Cast from a marble in the
Luxembourg, Paris

THROUGH THE
CAMERA'S EYE



And So We Began—





*Outdoor Sports?
Sometimes Buggy?*





That's the Old Fight, Boys.





Give Us Room.



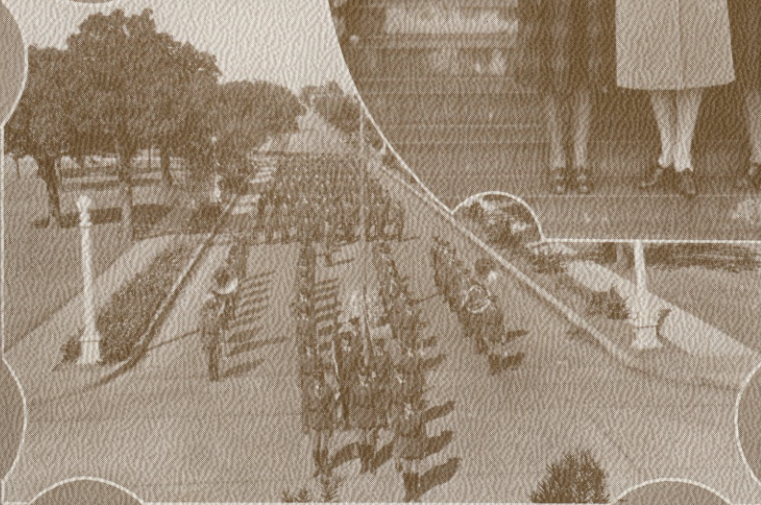


*Our Co-Eds
Are Capable—?*



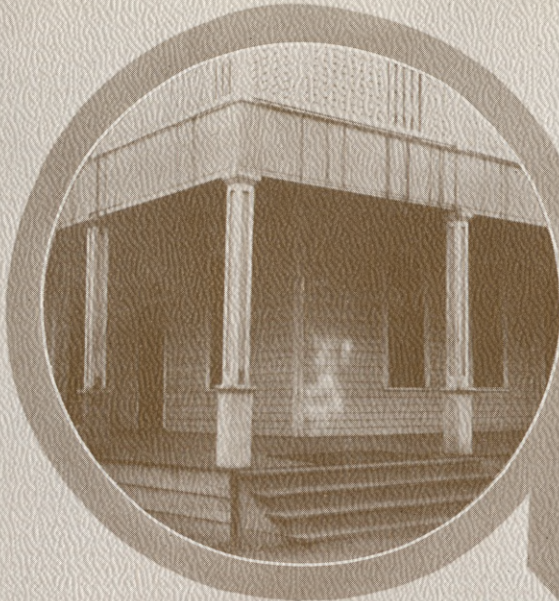


*Sungrins Are
Appropriate.
But Why
in Rainy Weather?*





*Good Old Camp Aggie—
Drilling, Shooting and Listen-
ing to Those Windbags*



*We Look About Us—
Strange Signs?*





And Neither Is It All Play.





*Co-Ops Enjoyed
the Party But We
All Enjoyed the
Music.*





*Sunshine for Play—Yes,
But We'll Take Snow Too.*





In Love or Dizzy.





When Aggies Shine.





Ye Old College Life.





In the Spring—





Just what



Days of Frolic





*Boys Must Have the Sun
As Well As the Mattresses*





Friendships Flourish



Revered.



Bele Peterson

MILITARY

Dear Fitz:

All about our hear again and maybe tell you
some things that I didn't get to over you.
Maybe you won't like it, but just the same
I'm going to write. Maybe you'll leave
this page in here. I wonder if I could
write this, or will you remember it.

Just to hold you.

Compass and fold you.

Shields me through, and through.

Just to miss you

And to kiss you

Bring those joys I never knew.

Just to scold you when I have told you.

Never to make me feel blue.

I will wait I love you,

I sincerely stand above you,

I love, love, you.

Jack Wise

Maybe some day I can send you
a record of this. Would you believe
it if I told you that I'd like to be able
to? (Yes and you - record)

Jack Wise Jr.

Quincy, Mass.

P. S. Don't think it was wonderful to you and for
you and, Really Fitz did I mean it. And my
little lady, I love you and one for saying so.
P.S. I love you.



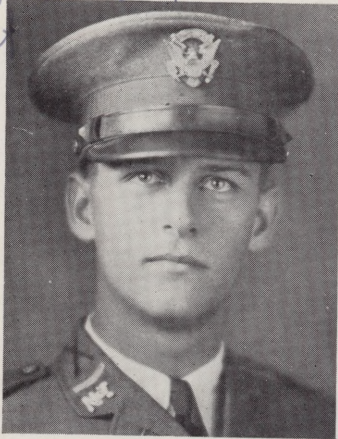
COMMANDANT OF CADETS

The Reserve Officers' Training Corps, as provided for by the National Defense Act of 1920, has for its purpose the training of young men for national defense, training of young men that will be valuable to the industrial and professional career, and training that will produce a sound and strong body. This training represents the experience of generations of teachers whose lives have been spent in the preparation of men of all types for an exacting service. It is in no sense conducive to a war-like spirit or in any manner derogatory to the peaceful and democratic ideals of our country. Its aim is simply the producing of a sound, strong body and a clear intellect, of a full realization and disposition to discharge to the utmost his duty to his fellow-man and to his country.

EDGAR H. KELTNER, Captain, Infantry (D. O. L.)

Antenna
 Dear Sig. I hope you
 have changed your
 idea of me. I like you
 at the first and I
 want you to always
 as a friend. I don't
 know if I told you
 that I remember me
 Billy Wood
 Richard Texas

The Staff



SERGEANT-MAJOR BILLIE WOOD

The staff is that indispensable part of the military organization which is composed of those who have been assigned work which takes up too much of their time for them to be assigned to companies. Major Peterson, who is, of course, commander of the battalion, has charge of the mess hall and is editor of the school paper. Major Peterson was last year chosen as the most efficient officer and was presented a saber by Frank Brothers of San Antonio. Lieutenant Gentry has several duties as adjutant. Lieutenant Davis is quartermaster this year, and it is his duty to run the armory. Billy Wood, who until a few weeks before mid-term was Sergeant-Major, assigns the guard duties.

Upon Major Peterson, who, of course, is the Major of the Battalion, fall the numerous duties and problems accompanying such an office. In addition to this, he manages the edition of the Shorthorn, the school weekly publication. The Major also has charge of the Mess Hall pay roll.

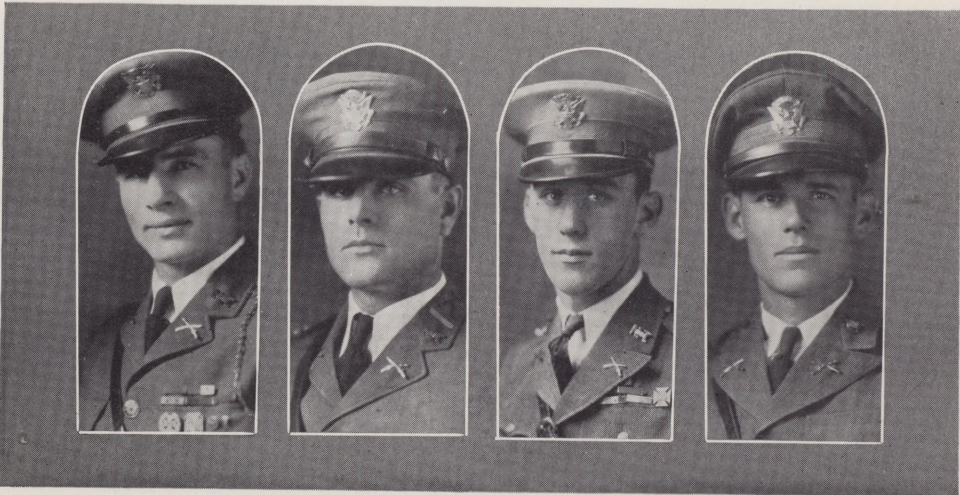
Lieutenant Davis, the Quartermaster, runs the armory. His duties include the maintenance of the military supplies such as rifles, cartridge belts, ammunition, camp equipment, etc.

Lieutenant Gentry is the Adjutant. He commands the battalion in the absence of the Major. He has many duties to perform which are probably not to be found among the listed duties of an adjutant.

Sergeant-Major Billy Woods' duties include that of appointing the guard detail.

Much of the smoothness with which the institution progresses is due to the harmonious operation of this staff.

MAJOR PETERSON FIRST LIEUTENANT DAVIS FIRST LIEUTENANT PAYNE ADJUTANT GENTRY



Reserve Officers' Training Corps

The Reserve Officers' Training Corps was established by the Federal Government in this institution at the beginning of the School Year 1921-22. Since that date the War Department has kept an officer on duty here as Head of the Military Science and Tactics Department. Major Carl A. Bishop was the first officer to be assigned. He was relieved prior to the opening of the School Year 1924-25. He was replaced by First Lieutenant R. M. Lawson, who spent four years at the College. Lieutenant Lawson was relieved in June, 1928, by Captain Edgar H. Keltner, who is at present on duty as Head of the Military Department.

The College has, prior to the beginning of school this year, employed an officer as Commandant of Cadets. Lieutenant L. W. Caine was with the institution from 1918 to 1925. Captain Paul C. Franke was appointed Commandant for the School Year 1925-1926. He was relieved by First Lieutenant Fred B. Norris, who served in the capacity of Commandant of Cadets until the end of the School Year 1928-29. At the opening of the School Year 1929-30 the offices of Professor of Military Science and Tactics and Commandant of Cadets were combined with Captain Keltner functioning in both capacities.

Since 1921 the enrollment has been constantly on the increase. In 1921 there was enrolled in the Reserve Officers' Training Corps 96 members. At the opening of school 1929-30 there was a total enrollment of 202.

The Course in Military Science and Tactics covers subjects that are beneficial to the cadet either in peace or war. In Military Courtesy and Discipline, he is taught to inculcate respect for and loyalty to constituted authority. In Military Hygiene and First Aid he is taught personal hygiene, first aid and prevention of diseases. A great part of the course is given over to Drill and Command which inculcates precision, soldierly appearance and bearing and the spirit of discipline. In Rifle Marksmanship he is given the proper shooting habits. In addition to the above the cadet is taught Combat Principles, Scouting and Patrolling, and the proper use of the automatic rifle.

The Cadet Corps is organized in the four Companies of Infantry with a Band section. Selected members are appointed cadet officers and non-commissioned officers. And through these appointees discipline is maintained. Company spirit is encouraged through inter-company competitions.

EDGAR H. KELTNER,

Captain, Infantry (D.O.L.)

Commandant of Cadets.



Company A



CAPTAIN PENDER

The reputation of a high percentage of efficiency possessed by this company is due largely to its fortunate choice of captains. The work left by Captain Billy Swift last year is being carried on by Captain Roy Pender, under whose leadership Company A is functioning with pleasing results. Captain Pender has had almost six years of military training and knows the game. Pender won second place last year in the individual competitive drill, being superceded by Captain Billy Swift.

At present the company does not have a first lieutenant. There are two officers. Second lieutenant Levis Wiggins is the ranking officer of the company. Second Lieutenant Neal Weller is the other officer.

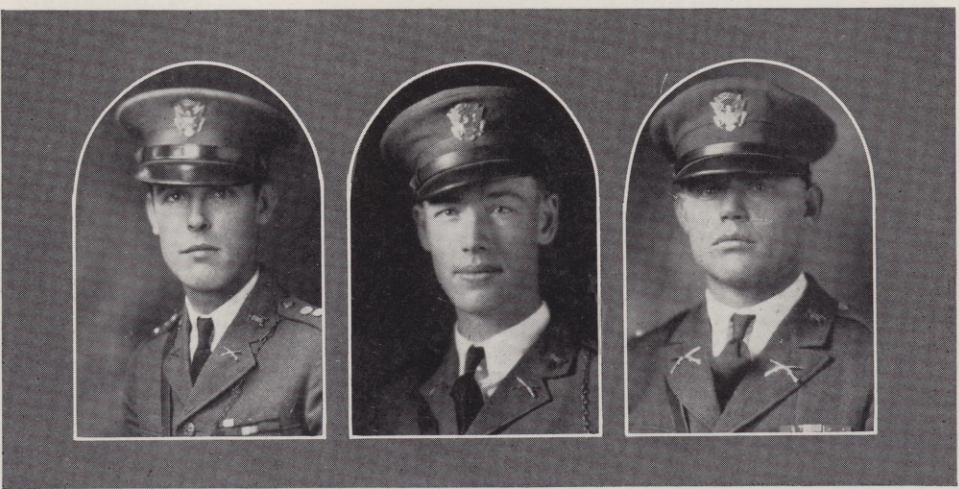
Lieutenant Weller was line captain of the N. T. A. C. football squad and captain of the basketball quintet this year. Until midterm the organization has been without a first sergeant. At midterm this distinction was awarded to D. F. Wilson. Sergeant Wilson, although considerably smaller than his predecessor, Murray, is energetic, willing to do his part, and helps in every way he can to support his company.

The members of Company A, with one or two exceptions, are boys who live on the campus. The company's quarters are in the noteworthy Lindbergh Hall. The hall has been called "Cheese Hall," but the men are convinced that a more fitting name is Lindbergh Hall. The young aviator of world fame spread his wings and soared safely over the dangerous waves to success, fame and fortune. It is said that whosoever casts his lot with those who make their abode in this hall will be greatly aided by the environment. A Company is a group of earnest and upright young men, each of whom is endeavoring to boost his company.

CAPTAIN PENDER

SECOND LIEUTENANT WIGGINS

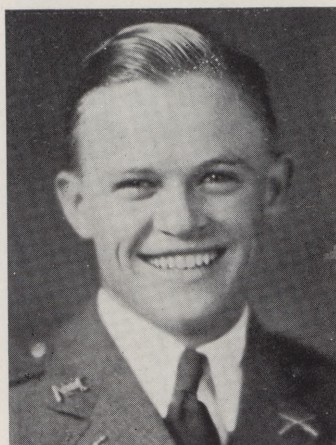
SECOND LIEUTENANT WELLER





Company A

ROY PENDER *Captain*
 LEVIS WIGGINS *Second Lieutenant*
 NEAL WELLER *Second Lieutenant*
 D. F. WILSON *First Sergeant*



FIRST SERGEANT D. F. WILSON

Roster Company A

Ashcraft, T. E.	Evans, John	Reynolds, C.
Ator, J. B.	Hagedorn, H.	Smith, W. L.
Ball, R. C.	Hall, Q. S.	Shull, J.
Brown, Glenn	Hood, Sam	Tilley, C. S.
Clayton, A. P.	Hollis, A. L.	Tilford, H.
Cotter, Obbie	Hurley, C.	Wells, Frank, Jr.
Caruth, Glenn	Kaczmarek, L.	Wood, T. A.
Chandler, L. C.	Lennen, L.	Wiseman, J.W.
Dunn, Jasper	Leonard, J. P.	Williams, L. D.
	Pass, L. D.	

COMPANY A





Company B



CAPTAIN TAYLOR

Company B, is composed principally of campus students. This company is housed in Fish Hall. Company B is noted for her speed in falling in when the bugler blows "Soupie."

The position held last year by the former Captain Peterson, who is now the Major of the Battalion, is now held by Captain J. W. Taylor. Captain Taylor was the first sergeant of B Company last year. He has proven worthy of the trust put in him by his superiors. First Lieutenant Douglas Faith, that "Decatur Youth," is second in command of the company. Lieutenant Faith takes a great interest in the company and spares no effort in behalf of it. Second Lieutenant Maag is the other officer in Com-

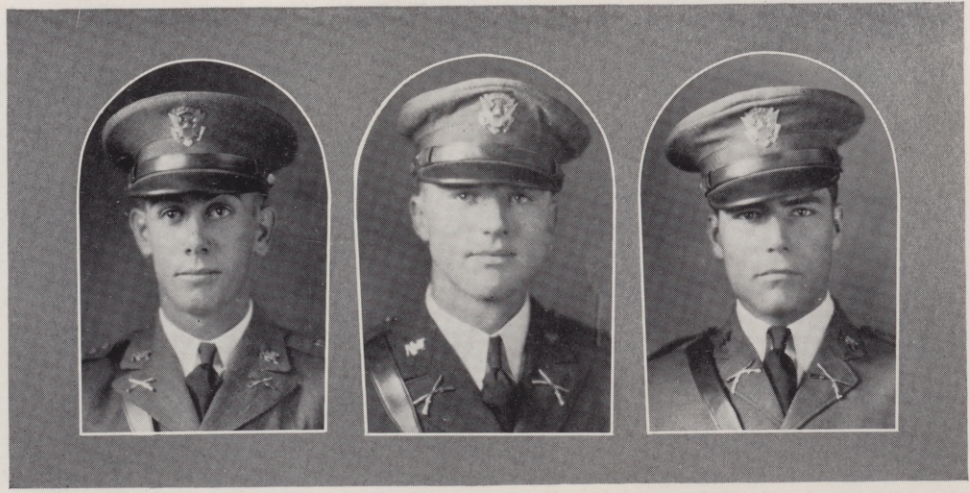
pany B. Lieutenant Maag is an efficient disciplinarian and is of invaluable assistance in the instruction of the company. The honor of being the first sergeant of Company B has been placed upon Jack Gray, who, February 15, was elected Most Competent Man by the student body. Jack "knows his military" and is well liked by all of the men in the company, both of which assets, considering the proper functioning of the company are indispensable for a man in Sergeant Gray's position.

This makes Company B's third year of residence in Fish Hall. Her moving from Lindbergh Hall to Fish Hall year before last has not proven detrimental to her efficiency. Company B has contributed generously to the college football machine in sending to the field Faith, Maag and Gray.

CAPTAIN TAYLOR

FIRST LIEUTENANT FAITH

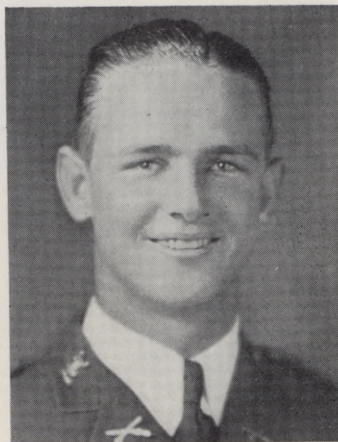
SECOND LIEUTENANT MAAG





Company B

J. W. TAYLOR *Captain*
 DOUGLAS FAITH *First Lieutenant*
 ORVILLE MAAG *Second Lieutenant*
 JACK GRAY *First Sergeant*



FIRST SERGEANT JACK GRAY

Roster Company B

Anderson, T. R.
 Barger, Carl
 Barton, Clay H.
 Beasley, Jack
 Cerley, John
 Erwin, John H.
 Gonzales, Mario
 Gravely, P. T.
 Henegar, J. B.
 Hughes, J. L.
 Hynds, Ray
 Johns, Ellis
 Kearby, Neal

Knotts, J. R.
 Landis, W. B.
 Lacy, W. E.
 Lilley, Frank
 Lilley, Harvey
 Leaverton, Joe B.
 Looney, Wm.
 Lowery, Wm. S.
 Mason, J. I.
 Miles, Burton
 Parker, Raymond
 Parker, Robert
 Pearce, Jesse O.

Rouse, W. T.
 Robison, H. H.
 Snider, Bowman
 Smith, Gorden Miller
 Smith, Jefferson
 Shaw, Arnold
 Simons, John T.
 Simmons, John L.
 Trout, Roy
 Vaughn, Will A.
 Walker, W. L.
 Watson, Edward M.
 Wheeler, Lowell

COMPANY B





Company C



CAPTAIN BRUMMETT

Company C is comprised of men from Tarrant County, most of whom live off the campus. The men of this company are enterprising, ambitious men who are willing to work for their company.

Company C is commanded by Captain E. H. Brummett, who has been a member of the college two and one-half years. He served last year as the "top kick" of Company D. At midterm last year Captain Brummett was made a second lieutenant. At the beginning of this year he was made a first lieutenant and was given the command of Company C. Several weeks later he was made a captain. The company at present has no first lieutenant. At the beginning of the year, Second Lieutenant L. T.

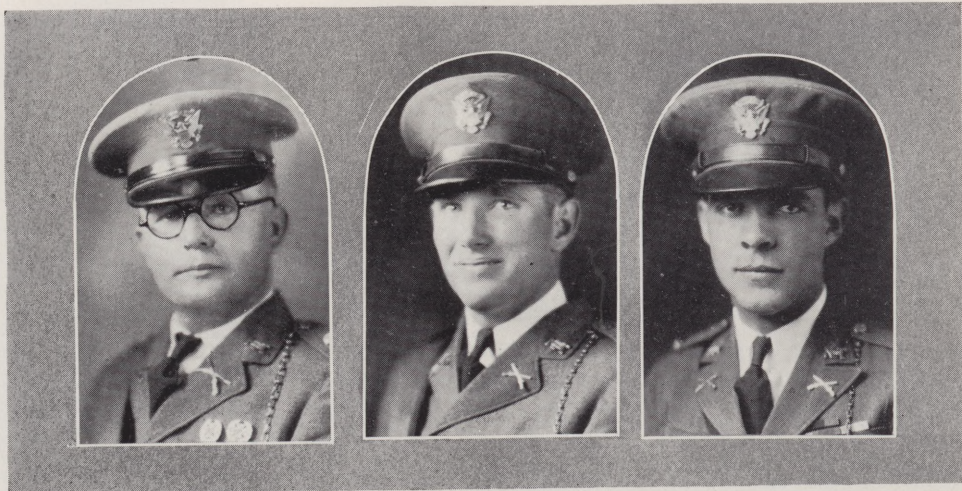
Nowlain officiated in the capacity of second in command of the company. At present this position is held by Second Lieutenant Robert Caperton. The first sergeancy, once held by E. K. Russell, is now held by Joe Ray Hatter.

A very momentous duty has developed upon the instructors of Company C. It was decided that the proper care in the instruction of those who were not proficient in military could not possibly be given were they to remain in the companies with those of more pronounced advancement. Conversely, it would not be fair to the other men to allow their progress to be deterred by those of lesser abilities, so a company was chosen for the instruction of these men. That such an honor, the duty of shaping and polishing the new parts to be put later into the military machine of N. T. A. C. should have been bestowed upon the officers of Company C is indicative of the trust placed in them as drill masters and instructors.

CAPTAIN BRUMMETT

SECOND LIEUTENANT NOWLAIN

SECOND LIEUTENANT CAPERTON





Company C

E. H. BRUMMETT *Captain*
 L. T. NOWLAIN *Second Lieutenant*
 ROBERT CAPERTON *Second Lieutenant*
 JOE RAY HATTER *First Sergeant*

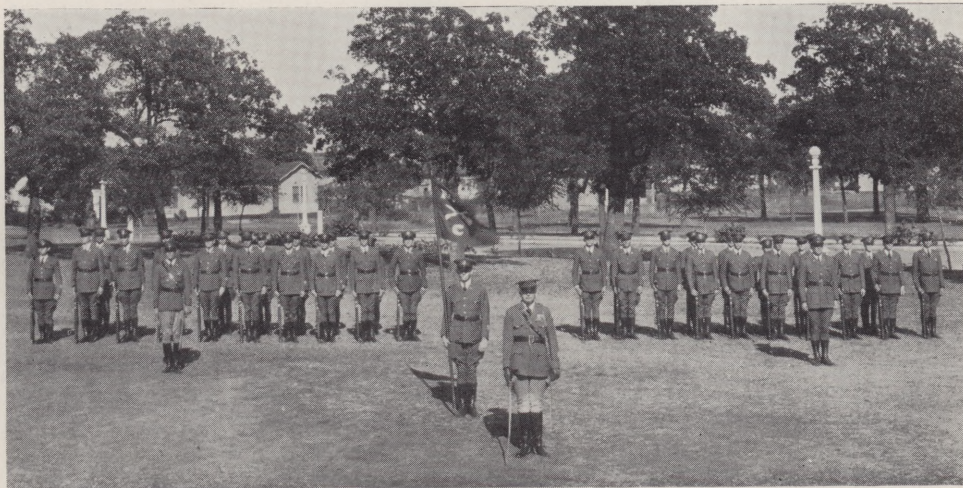


FIRST SERGEANT J. R. HATTER

Roster Company C

Baker, Jas. D.	Griffin, G. G.	Patterson, Lester
Blackburn, Herman P.	Harvey, Francis	Roach, Sears
Boone, Rochester L.	Holland, Jack	Slaughter, Raymond
Carmichael, C. T.	Houston, R. H.	Scott, C. T.
Cannon, W. L.	Lanier, W. A.	Story, Joe
Cooper, John W.	Lanier, E. O.	Summers, Strother S.
Darrah, Raymond W.	Malaise, George	Terrell, Robert
Foster, C. R.	Moseley, E. L.	Tucker, D. L.
Fulford, W.	McWhorter, Ted	Wortham, Wm.
Gregory, Chas.	Norman, Noble T.	Wilder, Maurice
	Owens, A. C.	
	Parr, Raymond	

COMPANY C





Company D



CAPTAIN McMAINS

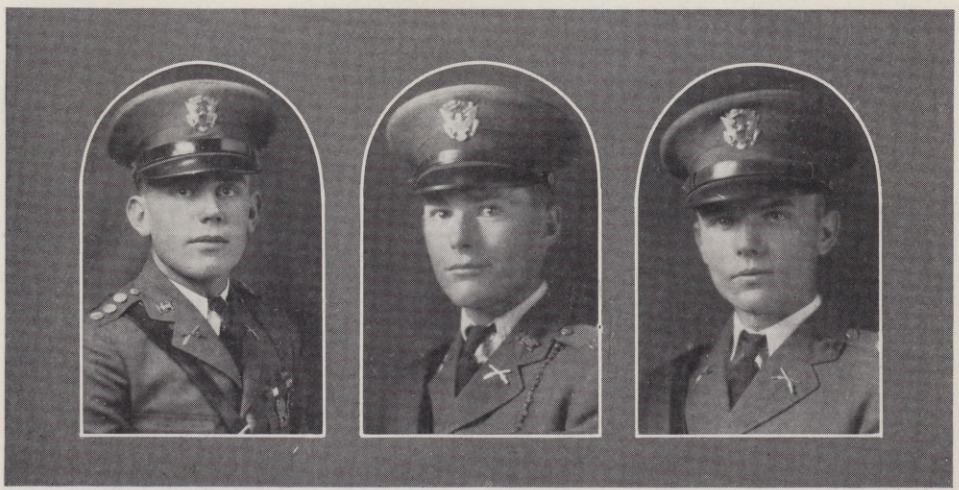
Company D is commonly known as the "Dallas" company. It is composed mainly of cadets who are from Dallas. Most of these men live off the campus. The company is led by Captain D. M. McMains, who has received several years of R. O. T. C. training. McMains attended Oak Cliff High School of Dallas where he took military for four years. He takes advantage of every opportunity to improve his "military vocabulary." He has attended various camps where he has acquired a large per cent of that military snap and precision which he has succeeded so admirably in instilling into the members of Company D. Until midterm, D Company's ranking officer was First Lieutenant Jess Bellamy. Bellamy was, during the latter half of last year, the company's first sergeant. Since Bell-

amy left at midterm, however, the company has not had a first lieutenant. Second Lieutenant Charles E. McMurray, at present, is the only lieutenant in the company. McMurray entered the college in '28, having graduated from Sunset High School of Dallas. First Sergeant Herndon is the company's "top kick." Sergeant Herndon has often demonstrated his prowess on the drill field as well as on the football field.

Company D has always maintained the record of a well-trained and disciplined unit. A large number of her members she draws from the high schools of Dallas, where they have studied military tactics to some extent. Company D mixes a certain amount of play with her work. She won the privilege of "throwin' a party" any night she liked, recently, when she won the "High Grade Point" contest among the companies for the first six weeks' period of the term. Company D is a harmonious group of industrious young men who have the welfare of their company at heart.

CAPTAIN McMAINS

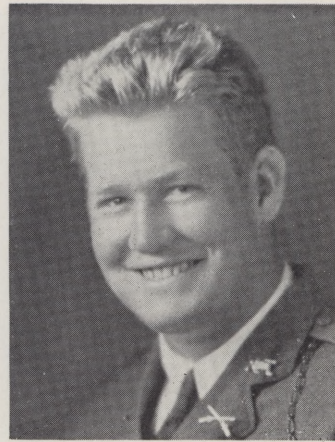
FIRST LIEUTENANT BELLAMY SECOND LIEUTENANT McMURRAY





Company D

D. M. McMains *Captain*
 JESS BELLAMY *First Lieutenant*
 CHAS. E. McMurray . . . *Second Lieutenant*
 JAMES HERNDON *First Sergeant*



FIRST SERGEANT JAMES HERNDON

Roster Company D

Addison, Carl
 Black, William
 Brothers, Emmette
 Caruth, J. C.
 Cely, Jack
 Dix, Robert
 Emery, Charles
 Franks, Lafayette
 Groves, George
 Haskell, Leroy
 Hudson, Vernon

Hall, Charles L.
 Hall, Horace
 Head, Homer C.
 Illingworth, R. H.
 Jones, David
 Johnson, J. W.
 Jared, Frank
 Leslie, L. B.
 Marks, Emory
 Moore, Glenn
 McCool, L. H.

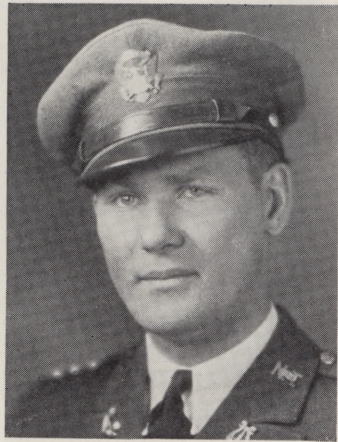
Orr, J. T.
 Roark, C. A.
 Rhymes, T. O.
 Strawn, C. S.
 Stuart, J. J.
 Stevens, J. L.
 Turner, William
 Warren, J. C.
 Newman, Walter D.
 Tisdale, Ted

COMPANY D





Band



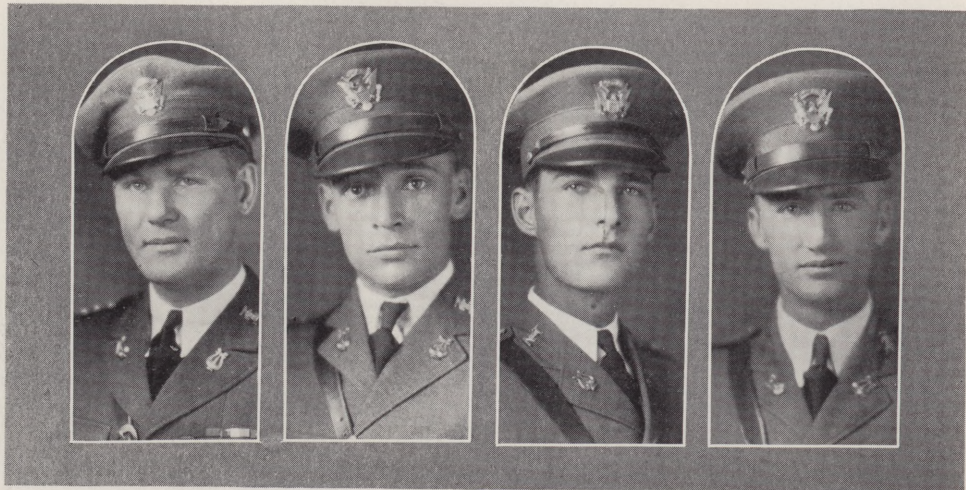
CAPTAIN BIGLEY

In the State Band Contest at the State Fair at Dallas last year the band won by a big majority first place in the junior class, out of seventy-five contestants. The band won second place in the meet, being beaten by one point by the Magnolia Petroleum Company's band of Beaumont, Texas, which was judged the best amateur band in the state. By invitation from Governor Moody, the Junior Aggie Band made a trip to Austin last year to play at his inauguration.

This year the band attended the state contest at Abilene where she defended her laurels commendably. The band visited the East Texas Chamber of Commerce as guests of the Fort Worth Chamber of Commerce. It has visited in several of the neighboring towns and given several radio concerts. The band responded nobly to Mr. Waggoner's request to play at his Inaugural Race Meet at Arlington Downs at the beginning of the year, and it kept the spectators merry during the entire meet.

Colonel Irons is the director of the band. It is Colonel Irons who has led the boys on to many victories. He is president of the West Texas Band Teachers' Association. In the contest among instructors at the state contest at the Fair last year, Colonel Irons tied with two other directors for the highest score. His skill in work of this kind is chiefly responsible for the success of the North Texas Aggie Band.

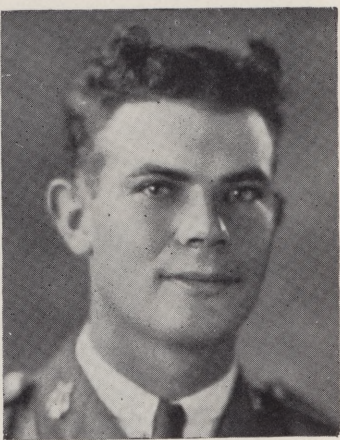
CAPTAIN BIGLEY FIRST LT. TAYLOR SECOND LT. GREGORY SECOND LT. BRAGG





Band

- LEROY BIGLEY *Captain*
- HOWARD TAYLOR *First Lieutenant*
- COSTON GREGORY *Second Lieutenant*
- MANSELL BRAGG *Second Lieutenant*
- GARLAND SMITH *Second Lieutenant*
- CARL SESSIONS *First Sergeant*

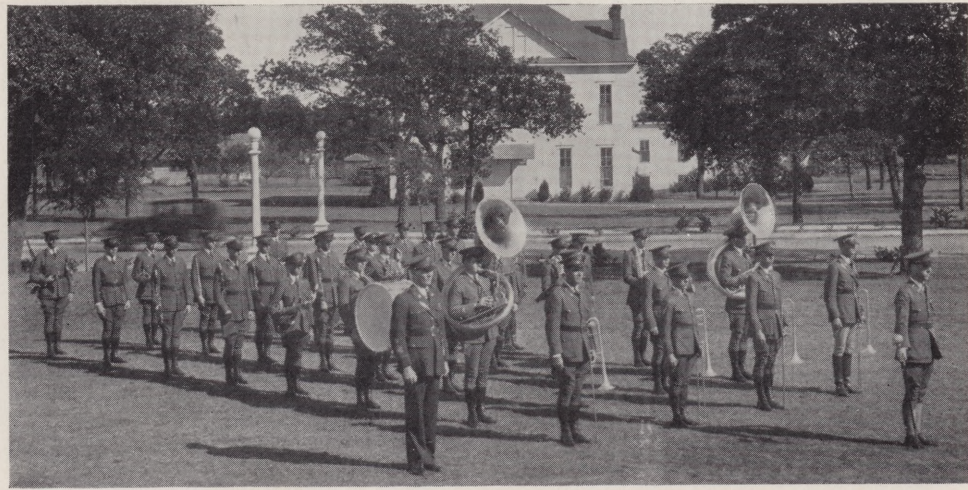


FIRST SERGEANT CARL SESSIONS

Roster

- | | | |
|-----------------------|-------------------|------------------------------|
| Addison, Carl | Huffhines, Elmer | Mullino, James |
| Easterling, Tom | Harris, Chas. J. | Read, Harrell |
| Franks, A. G. | Hester, Ira | Underwood, C. W. |
| Fox, Jeff | Hicks, Freddie | Wallace, Barney E. |
| Hamilton, Edwin | Houston, J. B. | Wood, T. A. |
| Herndon, G. C. | Jackson, Grant | Wise, Jack <i>Luling Six</i> |
| Hunt, Julian | Lipscomb, Vernon | Peacock, Eugene |
| Hollingsworth, Dorris | Long, Wm. C. | Russell, E. K. |
| | McPherson, Parker | |
| | Minter, Jerry | |

BAND



Rifle Team

The rifle team is now firing its first match, the Eighth Corps Area intercollegiate match. The record shots fired to date show favorable results of the many hours of the grueling practice spent by every member of the team. The team is scheduled to fire two more matches, the William Randolph Hearst match, which is the hardest one they have, and an individual match with Texas A. & M., the Colorado School of Mines and Allen Academy.

There are seventeen men working for a place on the team. Only four of these, Weller, Stuart, Pender, and McMains are old members of last year's team. The new members are Peterson, Warren, McMurray, Illingworth, Roach, Caperton, T. A. Wood, Holland, Tilford, Groves, J. W. Taylor, Runyun and Dix. McMains is the captain of the team. The team is coached by Captain E. Keltner. Captain Keltner, by his evidence of great interest in the rifle team, has inspired the boys to work harder than ever before.

RIFLE TEAM





FAVORITES

A decorative rectangular border with a repeating geometric pattern surrounds the text.

The Most Competent Girl
HAZEL MAY GRAF

The Most Competent Man
JACK GRAY

The Most Artistic Girl
ADENA NORMAN

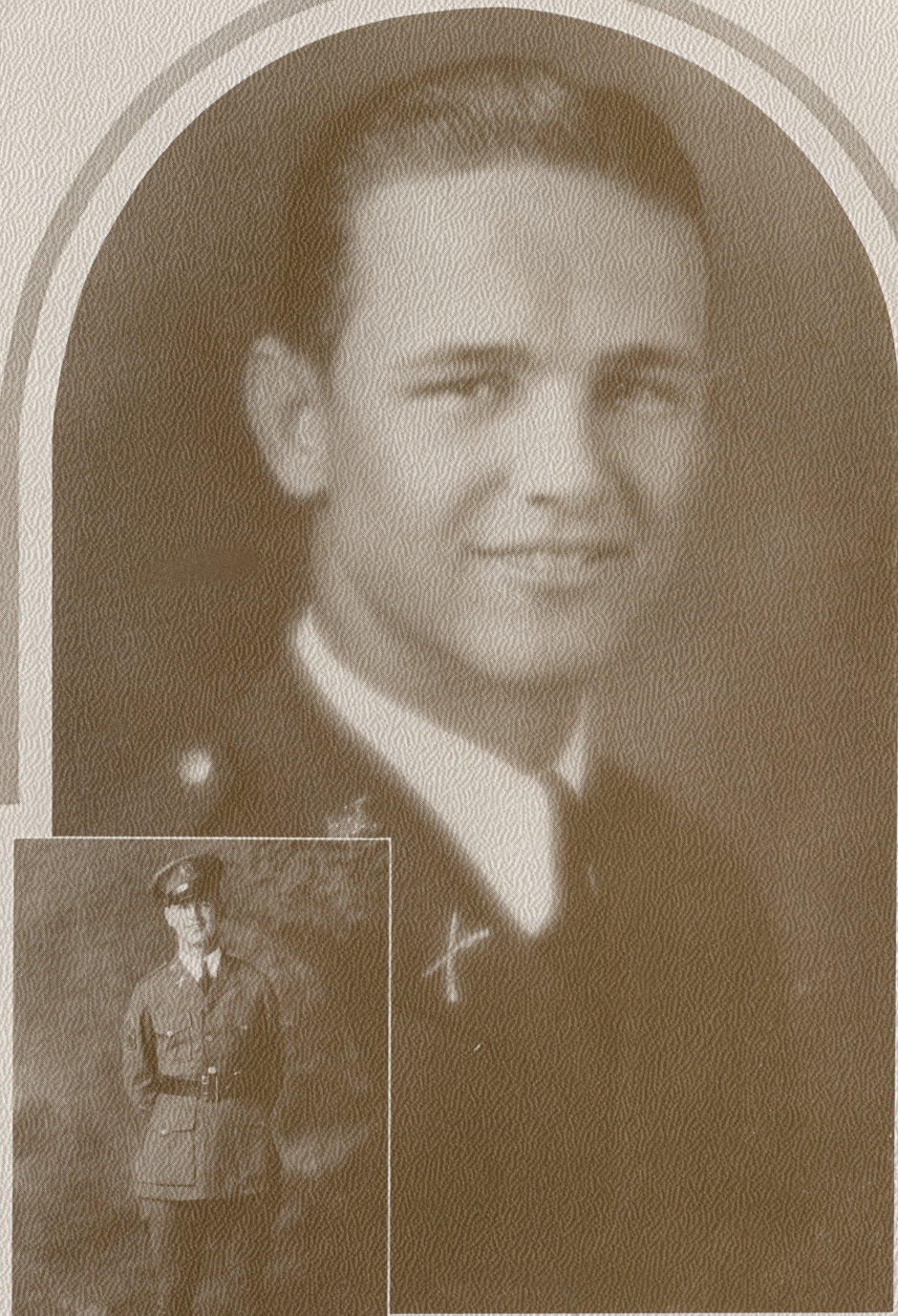
The Most Gentlemanly Man
ROY G. PENDER



*I love you
with all my
heart.
Hazel.*



Hazel Mae Graf



Jack Gray



*Address
[illegible]*

Adena Norman



Roy Pender



ATHLETICS

Dearest Elizabeth:

I will ~~will~~ always remember your
smiling face and cute baby ways. I
hope you don't lose them before next
year. Please be as sweet as ever
and remember not to forget all
about me while you are having
a good time next (this) summer

~~with love & kisses~~
think so do you?

Robert Dix

COACHING STAFF

The Successful Year of 1929-30

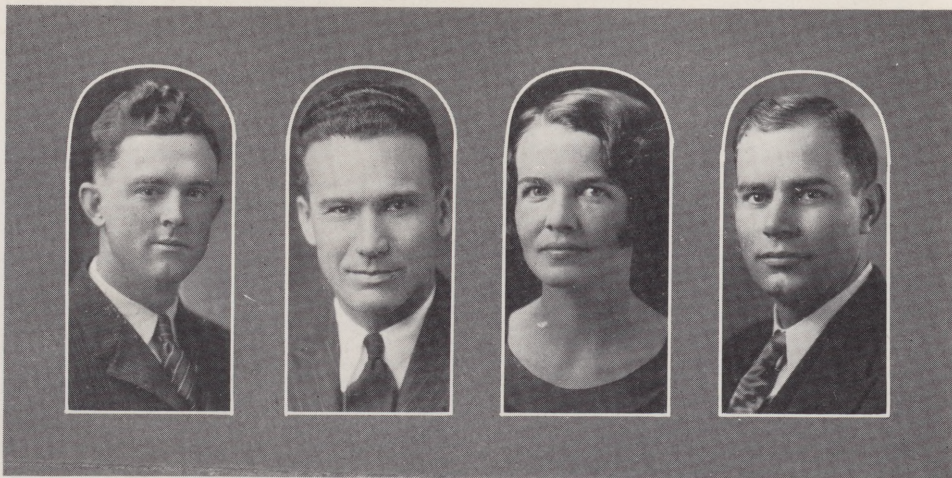
The success of 1929-30 athletics in N. T. A. C. depended largely upon the coaching staff, which is a very commendable unit. Coach "Red" Moore, head coach and director of men's athletics, organized a hard-driving eleven that brought the conference title to N. T. A. C. Mr. W. L. Hughes tendered his valuable services on the athletic committee. Mrs. W. L. Hughes aroused a great deal of interest in women's athletics with her point system of lettering and has developed a live organization out of the college's Women's Athletic Association. Mr. Dunsworth is assistant in all branches of athletics, and he has proved his services very valuable on the gridiron, track, and basketball court. Robert Jackson, a former student of N. T. A. C., was a valuable assistant in building 1924 teams.

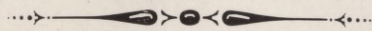
MR. MOORE

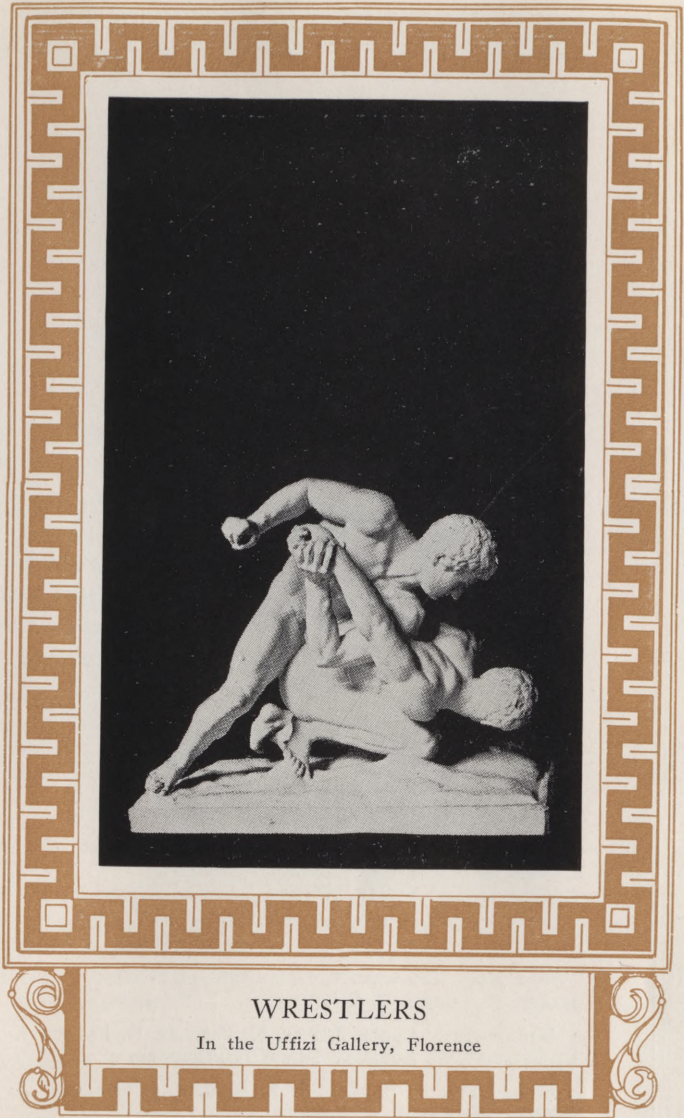
MR. HUGHES

MRS. HUGHES

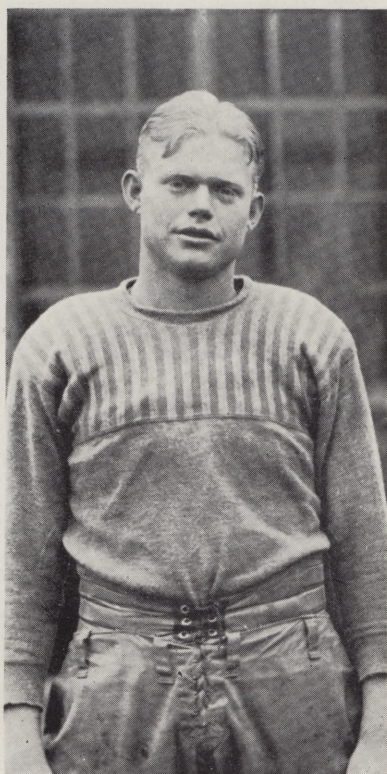
MR. DUNSWORTH







FOOTBALL



CAPTAIN WELLER

1929 Season

Weller and Faith served as co-captains. Weller was a great leader, making quick decisions without a miss, instilling fight into his teammates. The tackle position on Weller's side will sorely miss his great strength and do-or-die spirit.

Squad Names

Back Row: NORMAN, J. DUNN, HOLLIS, ERWIN, J. SIMONS, O. MAAG, DOC HARVEY, L. KACZMAREK, B. SNIDER, E. K. RUSSELL.

Middle Row: COACH MOORE, N. WELLER, D. FAITH, J. GRAY, COACH JACKSON, T. GRAVELY, E. GENTRY, W. ROBISON, COACH DUNSWORTH.

Front Row: B. PARKER, J. R. KNOTTS, J. CEARLEY, A. SMITH, J. BROOKS, J. HERNDON, J. G. GROVES, W. PAYNE, R. PARKER.





1929 Season

Faith, the dependable backfield captain, played great football in '29 and also in '28 and will likely be back to star for N. T. A. C. in 1930. "Red" was one of the best kickers, line plungers, and defensive men in the conference. He could be depended upon in any crisis to gain the necessary yardage. "Red" helped lead his team to the conference title this year.



CAPTAIN FAITH

Reserves

Left to Right: E. GENTRY, W. PAYNE, J. SIMONS, N. NORMAN, J. ERWIN, A. L. HOLLIS, J. DUNN



Gray was a new man on the squad but showed up like a veteran. Jack was a natural leader anyway, so the men selected him to lead them next season.

Snider was a new man, an untiring worker, and a fighter. Snider was a mass of strength wherever he played. A good kicker, great line man, and a demon when bucking a line, he will be back next season.

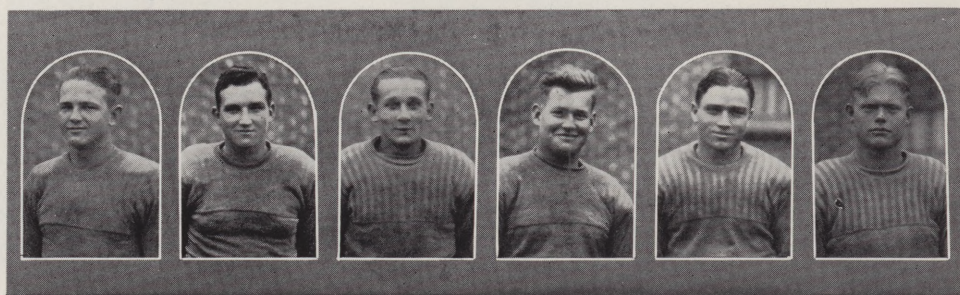
Russell was a heady player both on the offensive and defensive. Although a new man, he was a consistent player and did some nice work backing up the line. E. K. will be back next season.

Herndon was a new man, a cheerful worker and a great center. "Puny" was a tower of strength in the line and a very fine hub to build a team around. He will be back again to play for the Aggies.

Cearley was a second year man, a serious worker, and a dependable man. John could always be seen at either guard position, giving all he had. He will be back next season.

Weller was a great leader and a real football player. This was Weller's second and last year on the team.

Left to Right: J. GRAY, B. SNIDER, E. K. RUSSELL, PUNY HERNDON, J. CEARLEY AND NEIL WELLER



Parker was a new man, a tireless worker, and a head-up end. "R" snatched many passes and broke up many of the opponent's plays. His end was never circled. He will be back next season.

Faith played a good brand of football all season as captain. He is exceptionally good in line plunges, punting, and defensive work. "Red" is to be back for another season.

Gravely, a second year man, played his usual good style of football. "Puss" lent his strength to the backfield this year. He was a stellar line backer. He will be a good leader next year.

Smith was a new recruit but developed into a heady quarterback and backfield man. Smitty was a good punter, passer, and end runner. He will be back for another season.

"Buddy" Parker played his first college football this year. He is a cheerful, competent back, and has a great future. He will be a real asset to the team another year.

Maag was a new man on the squad, but after a late start showed that he could play football. "Dutchman" could be depended upon to play either tackle position. He should be a good man next season.

Left to Right: R. PARKER, D. FAITH, T. GRAVELY, A. SMITH, B. PARKER, O. MAAG





Scoreboard of Football-1929

N. T. A. C.	0	Texas Military College	12
N. T. A. C.	14	Southwestern University	20
N. T. A. C.	0	Wesley College	6
N. T. A. C.	18	Gainesville Junior College	0
N. T. A. C.	12	Wichita Falls Junior College	7
N. T. A. C.	19	Denton Teachers Reserves	0
N. T. A. C.	0	T. C. U. Fish	7
	—		—
	63		52

Knotts was a very versatile player, covering fumbles incessantly, always playing heads-up football. "Puss" will be back next year, and he is expected to smear 'em.

Harvey was a brainy quarterback and safety man and a passer de luxe. "Doc" was one of the fastest backs on the team. He will be missed next season.

Brooks played a neryv game, and he was the best broken field runner on the team. He will be absent when the season opens next year.

Groves was a new man and very promising back, but unfortunately he received injuries in the early part of the season that put him out for the rest of the season. George will be back another year.

Robison could be depended upon to play a good game. He was rather light for a guard position, but he made up for size in fight. He will be back next year.



Left to Right: J. R. KNOTTS, F. HARVEY, J. BROOKS, G. GROVES, W. ROBISON



DISKOBOLOS (Discus Thrower)
Probably by Myron—Elbridge G. Hall Collection

BASKETBALL

1930 SEASON

Gray was the outstanding player on the squad, and the team's offense was built around him. Gray broke the conference scoring record.

Weller was playing his second and last year on the team. He played his guard position successfully, always a great hindrance to his opponent's scoring.

Harvey was a fast forward and an accurate scorer. He could always be depended upon to give a good account of himself when in the game.

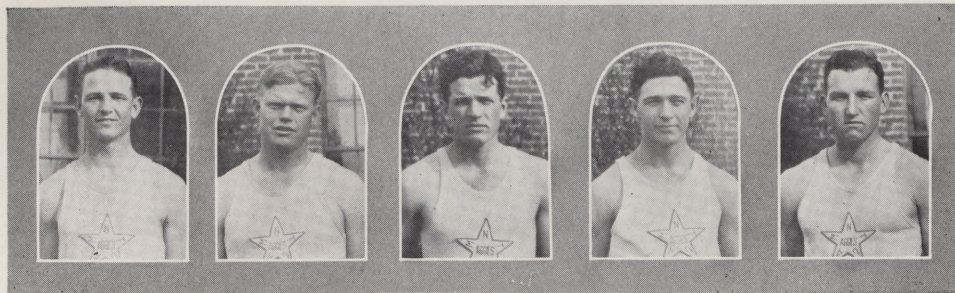
Groves was a new man on the team. After a late start, he saw a great deal of service, and could always be counted upon to do his part when called upon.

Snider was a new man, but he was big, fast, and an accurate scorer, always giving his opponent plenty of trouble. Snider was a regular from the start.

Standing: COACH MOORE, GRAY, WELLER, BIGLEY, HALL, SNIDER, ASSISTANT COACH JACKSON.

Kneeling: PARKER, PIERCE, GROVES, HARVEY, PARKER.





GRAY, WELLER, HARVEY, GROVES, SNIDER

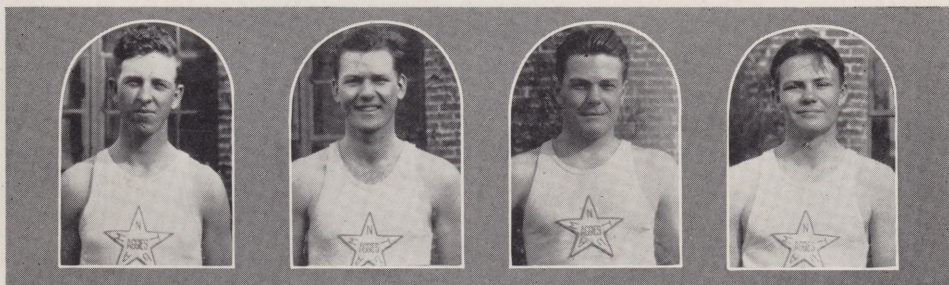
Parker was a real little player, an accurate passer, scorer, and fast dribbler. "Buddy" always there from the start.

Parker, also a new man, gave a good account of himself at all times; big, fast, and a serious worker, he showed much improvement.

Hall played his first year as a first string man. Hall is tall and was good at either the center or forward position.

Bigley was the mainstay of the team, being one of the two letter men back. Bigley was still the best center in the conference, making points, getting the tip-off more oftener than his opponent.

PARKER, B., PARKER, R., HALL, BIGLEY



RESULTS OF THE SEASON

The Seasons' Scoreboard Results of 1929 Season

N. T. A. C.	Opponents
N. T. A. C. 29	Poly Methodists 15
N. T. A. C. 44	P. B. Brake Co. 35
N. T. A. C. 51	Gainesville Jr. College 25
N. T. A. C. 39	Gainesville Jr. College 29
N. T. A. C. 39	T. P. Coal and Oil Co. 26
N. T. A. C. 45	Paris Jr. College 27
N. T. A. C. 37	Paris Jr. College 19
N. T. A. C. 37	Paris Jr. College 22
N. T. A. C. 25	Paris Jr. College 28
N. T. A. C. 41	Wichita Falls Jr. College 16
N. T. A. C. 25	Denton Eaglets 12
N. T. A. C. 39	Trinity Pharmacy Cubs 22
N. T. A. C. 31	Dr. Pepper of Dallas 43
N. T. A. C. 43	Wichita Falls Jr. College 27
N. T. A. C. 29	Gainesville Jr. College 25
N. T. A. C. 23	Denton Eaglets 24
N. T. A. C. 28	T. P. Coal and Oil Co. 20
N. T. A. C. 31	Higginbotham 13
N. T. A. C. 28	Morris Men's Wear 46
—	
N. T. A. C. Total 664	Opponents' Total 474



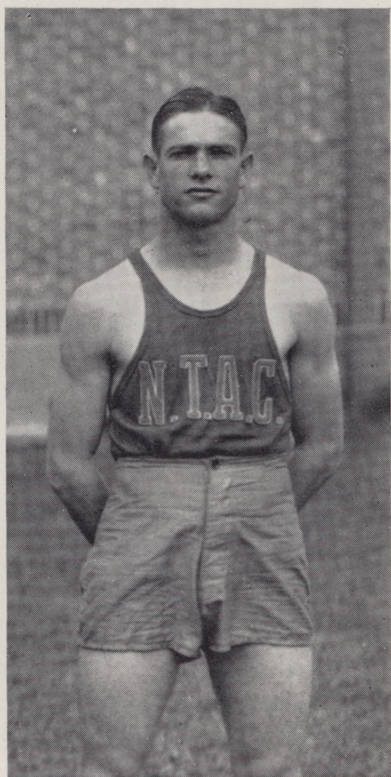
DIANA OF VERSAILLES

In the Louvre

OTHER SPORTS



1929 Track Season



CAPTAIN CREECY

Crecy led the team excellently during the season. He was a consistent winner in all meets. Crecy set a new record in the javelin throw. He was a member of the relay team, and also ran the dashes. He was the most versatile man on the team.

Wiggins is a new man on the squad but proved himself worthy in throwing the discus. He won first place in the state meet.

Newman Casey was an all-round athlete. He participated in football, basketball, and track. He ran the dashes, hurdles and 440-yard dash. He was very popular and will be missed next year.

SQUAD NAMES

Standing: COACH MOORE, SCHUTTS, NOWLAIN, WIGGINS, MAXEY, PAYNE, CASEY, COACH RUMPH

Middle Row: FULLER, KACZMAREK, HARLAN

First Row: CREECY, NORMAN, WILSON, ROCK, CHANDLER, TIMS





1929 Track Season

Gentry was a diligent trainer and a consistent winner in the meets. He won second place in the mile at the state meet. Gentry will be back another year as captain of the team.

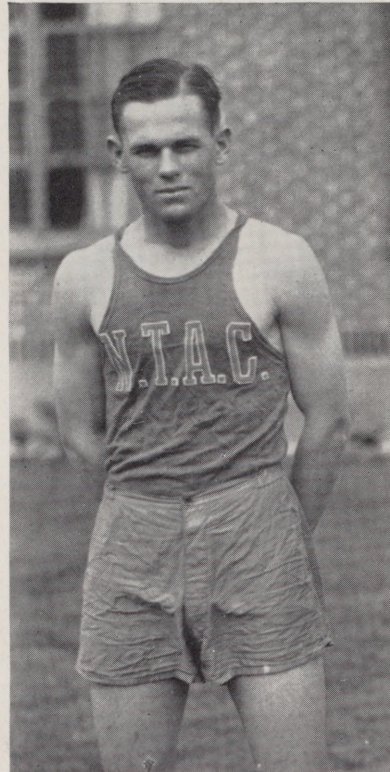
Maxey was a second year man on the team, a diligent worker, and a steady winner. He was a member of the mile relay, ran the hurdles, and 220-yard dash, winning fourth in the low hurdles at the state meet and several places in dual meets.

Nowlain was there when it came to pole vaulting. He also ran 220 low hurdles, winning fourth place in the state meet.

"Red" Faith was a new man for the team. He furnished competition in the hurdle races, discus and shot put.

Nowlain was an all-round good man in the dashes, pole vault and hurdles.

Kaczmarek was the weight man on the team. He was the best shot put man the team had. He will be back again.



CAPT.-ELECT GENTRY

MAXEY, NORMAN, FAITH, NOWLAIN, KACZMAREK, NEWMAN





1929 Tennis



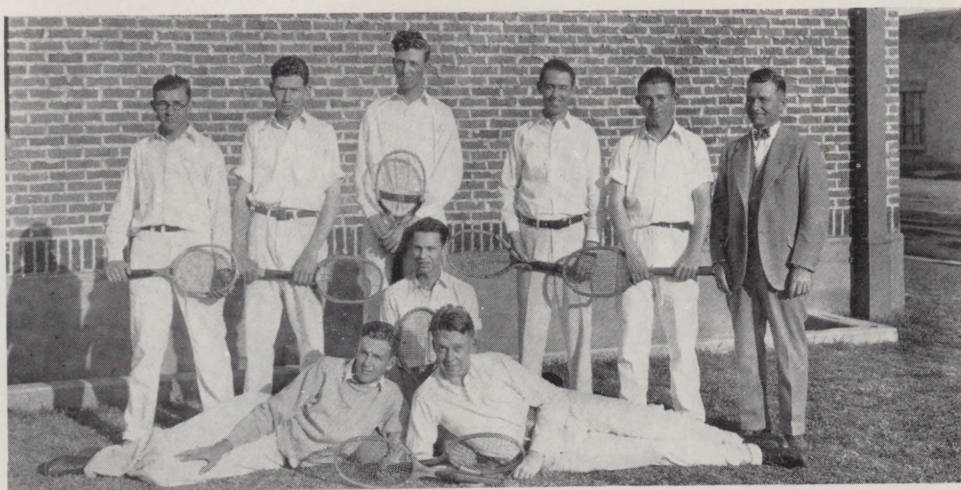
BILL HUDSPETH, CAPTAIN

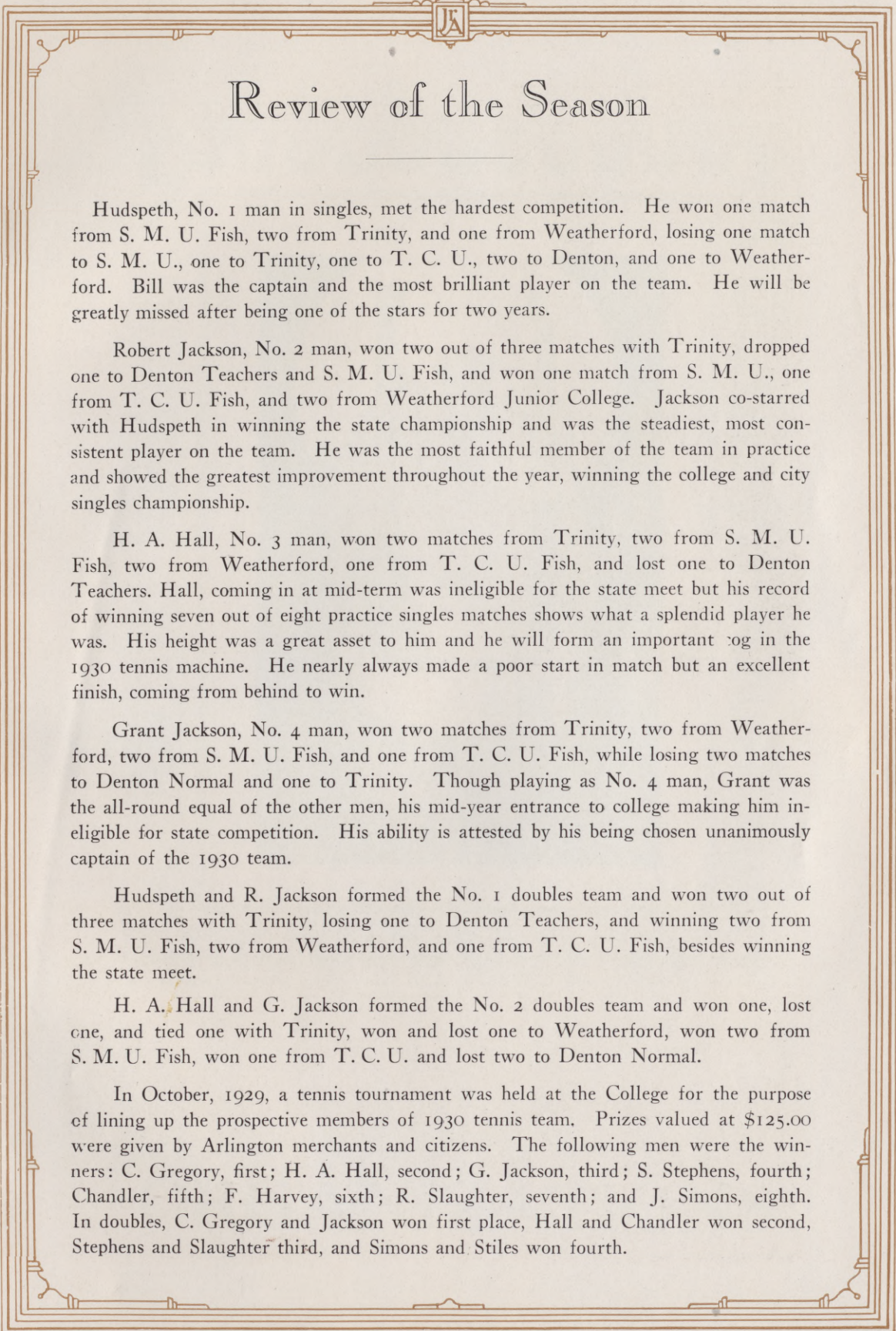
The Junior Aggie Tennis Team won the state championship in the Junior College Conference in the meet held on the home courts by winning first in doubles and third and fourth in the singles. Bill Hudspeth and Robert Jackson won first place in the doubles by trimming Wichita Falls 6-4, 4-6, 7-5, in their first match and by defeating Paris in the finals in straight sets, 6-1, 6-0, 6-1. Robert Jackson won third in the singles and Bill Hudspeth won fourth.

Previous to the state meet the team played ten matches with Trinity, S. M. U. Fish, Weatherford, T. C. U. Fish and Denton Teachers. Counting the first four men on the team, although six men were often used, the Aggie netmen won eight out of the ten matches. The only losses were to the fast Denton Teachers' team.

Standing: G. JACKSON, HALL, H. A. HALL, HEMMELE, R. JACKSON, COACH PRESTON.

Front Row: HUDSPETH, BILL, B. SCHUTTS, ALTMAN.





Review of the Season

Hudspeth, No. 1 man in singles, met the hardest competition. He won one match from S. M. U. Fish, two from Trinity, and one from Weatherford, losing one match to S. M. U., one to Trinity, one to T. C. U., two to Denton, and one to Weatherford. Bill was the captain and the most brilliant player on the team. He will be greatly missed after being one of the stars for two years.

Robert Jackson, No. 2 man, won two out of three matches with Trinity, dropped one to Denton Teachers and S. M. U. Fish, and won one match from S. M. U., one from T. C. U. Fish, and two from Weatherford Junior College. Jackson co-starred with Hudspeth in winning the state championship and was the steadiest, most consistent player on the team. He was the most faithful member of the team in practice and showed the greatest improvement throughout the year, winning the college and city singles championship.

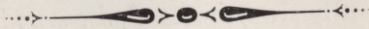
H. A. Hall, No. 3 man, won two matches from Trinity, two from S. M. U. Fish, two from Weatherford, one from T. C. U. Fish, and lost one to Denton Teachers. Hall, coming in at mid-term was ineligible for the state meet but his record of winning seven out of eight practice singles matches shows what a splendid player he was. His height was a great asset to him and he will form an important cog in the 1930 tennis machine. He nearly always made a poor start in match but an excellent finish, coming from behind to win.

Grant Jackson, No. 4 man, won two matches from Trinity, two from Weatherford, two from S. M. U. Fish, and one from T. C. U. Fish, while losing two matches to Denton Normal and one to Trinity. Though playing as No. 4 man, Grant was the all-round equal of the other men, his mid-year entrance to college making him ineligible for state competition. His ability is attested by his being chosen unanimously captain of the 1930 team.

Hudspeth and R. Jackson formed the No. 1 doubles team and won two out of three matches with Trinity, losing one to Denton Teachers, and winning two from S. M. U. Fish, two from Weatherford, and one from T. C. U. Fish, besides winning the state meet.

H. A. Hall and G. Jackson formed the No. 2 doubles team and won one, lost one, and tied one with Trinity, won and lost one to Weatherford, won two from S. M. U. Fish, won one from T. C. U. and lost two to Denton Normal.

In October, 1929, a tennis tournament was held at the College for the purpose of lining up the prospective members of 1930 tennis team. Prizes valued at \$125.00 were given by Arlington merchants and citizens. The following men were the winners: C. Gregory, first; H. A. Hall, second; G. Jackson, third; S. Stephens, fourth; Chandler, fifth; F. Harvey, sixth; R. Slaughter, seventh; and J. Simons, eighth. In doubles, C. Gregory and Jackson won first place, Hall and Chandler won second, Stephens and Slaughter third, and Simons and Stiles won fourth.





ORGANIZATIONS

Ray

Don't forget
about this old place.
Please,

Jack Miller
Box 194
Jung's Grove

P.S. Even

if you don't think
enough for you.

that we are good

Phi Kappa Theta Club



The Phi Kappa Theta Club was organized three years ago for the purpose of encouraging scholarly ideals and a greater devotion to study.

A student must make an average of above 89 per cent on one semester's work in order to belong to this organization.

The club sponsors a lively social entertainment program for its members and their guests.

FANNIE MAE WILLIS, *Vice President*
ROBERT PETERSON, *President*

DONNA MAE OWEN, *Secretary*
JOE TAYLOR

ORVILLE MAAG
BONNIE LEA LANGDON

VIRGINIA ALVERSON
RONALD ILLINGSWORTH

BONNIE HUDSPETH
HOWARD TAYLOR

GEORGE L. DICKEY, *Sponsor*



Avolente Club



The Avolente Club was organized in 1923. The purpose at the time of organization was for social entertainment. Of course this club was organized for "girls only," but when parties and banquets were given, the boys usually received their share of the fun. The Avolente Club is noted for its peppy dances. It claims the distinction of being one of the oldest and most democratic clubs on the campus. Avolente means "all for pleasure," and that is just what the club has tried to live up to. The girls selected for membership in the club depend on their congeniality and good sportsmanship.

HAZEL MAE GRAF
 GENEVIEVE GREER, *Secretary*
 MARTHA HAHN, *President*

DELMA BROWER
 ANICE HAYES
 RUSSELLE MITCHELL

HAZEL MAYS
 PALMA DUKE
 MILDRED ANN KEARBY

BONNIE HUDSPETH
 NAOMI WALKER
 SUE HULL

THETA BUSSEY
 ELIZABETH BUSH
 BONNIE LEA LANGDON
 MYRTLE RAWLS, *Sponsor*

Sans Souci Club



The Sans Souci Club is an organization for social purposes only, being one of the oldest and most active girls' clubs on the campus. The variety of its activities is characterized by a spirit of gaiety indicative of the meaning of the name, "Without Care." Friendship between the old and new members is one of the oldest traditions of the club.

The club annually sponsors a dance honoring the Senior girls. During the past year many interesting and unusual social events were sponsored by the club.

DONNA MAE OWEN, *President*
 ELIZABETH JOINER, *Vice-President*
 MARY FARRAR, *Secretary*

VIRGINIA ALVERSON
 MARGARET RANDOLPH
 VERONA BASSETT

DOROTHY BUFORD
 TRUE WILLIAMS
 THEO VANDAVEER

ADENA NORMAN
 RUTH MILLER
 EDITH RODDY

NORMA KOTT
 LORENE KOTT
 EUNICE HENDERSON

MISS MARYTE POINDEXTER
 MISS ZELDA RAMSEY



La Docena Club



The La Docena Club was organized in November, 1927. It is the newest of the three girls' clubs on the campus, but it has already made a good name for itself. The purpose of the organization is entirely social. Its membership, as the Spanish name implies, cannot exceed twelve girls, not including the sponsors. The girls are selected upon their good sportsmanship and general ability. Besides one annual banquet, the club sponsors a variety of interesting and unique entertainments.

FRANCES GEESLIN, *Vice President*
NATALIE DAVIE, *President*

THELMA JO FORD
ANN HIETT, *Secretary*

ELIZABETH LATIMER
KATHLEEN HOWLE

WILENA KINGSTON
EDNA MOORE

FREDA CHRISTMAN
WANETTA JOHNSON

MISS NORMA CHATHAM, *Sponsor*



Hoof and Plow Club



The Hoof and Plow Club was organized in 1924 to promote friendship and cordiality among the students. It was discontinued for two or three years, and was reorganized in 1929, and has progressed rapidly since then. Interesting bi-monthly programs were held in connection with Educational Motion Picture Reels of the United States Department of Agriculture. Both cooperative and military students are enrolled in this club. The sponsors were faculty members of the Agriculture Department.

WESLEY SMITH, *President*

J. R. HATTER, *Vice-President*

TOD MCWHORTER

VERNON HUDSON

EMORY MARKS

RAY LOWANCE

JAMES KNUDSON

DAVE GUTHRIE

TOM COLLINS

J. B. ATOR

J. D. SMITH, *Reporter*

ROY BARKER

HAROLD HALL

CARL ADDISON

ARNOLD LIPPS

L. B. LESLIE

HENRY SPALDING

W. W. ROBINSON

FLOYD BROTHERS

OLA ORGAN

LEWIS SIMPSON

GLENN CARRUTH

JACK CELY, *Secretary-Treasurer*





The Officer's Club



The Officers' Club consists of cadets who hold commissions in the corps. All men who wear "leather" are automatically members. The Officers' Club is led by the ranking officer of the battalion. This officer is Major Robert Peterson of Lexington, Texas. The club is a very lively organization, having sponsored several dances and parties to bring the cadet officers into a strong bond of fellowship. Captain E. H. Keltner, the Commandant and Professor of Military Science and Tactics, is the sponsor of the club.

- ROY PENDER, *Cd. Captain*
- CHARLES McMURRAY, *Cd. Second Lieutenant*
- ROBERT PETERSON, *Cd. Major*

- ROBERT CAPERTON, *Cd. Second Lieutenant*
- HOWARD TAYLOR, *Cd. First Lieutenant*
- LEVIS WIGGINS, *Cd. Second Lieutenant*

- J. P. DAVIS, *Cd. First Lieutenant*
- LEROY BIGLEY, *Cd. Captain*
- DOUGLAS FAITH, *Cd. First Lieutenant*

- L. T. NOWLAIN, *Cd. Second Lieutenant*
- WALTER PAYNE, *Cd. First Lieutenant*
- ELBERT GENTRY, *Cd. First Lieutenant*

- NEAL WELLER, *Cd. Second Lieutenant*
- D. M. McMAINS, *Cd. Captain*
- JOE TAYLOR, *Cd. Captain*

- JESS BELLAMY, *Cd. First Lieutenant*
- COSTON GREGORY, *Cd. Second Lieutenant*
- E. H. BRUMMETT, *Cd. Captain*

- ORVILLE MAAG, *Cd. First Lieutenant*
- MANSELL BRAGG, *Cd. Second Lieutenant*

Sergeant's Club



The year 1927 saw the beginning of the Sergeant's Club; an organization for the purpose of furthering the Sergeant's cause—to promote cooperation, friendship, and entertainment within the Sergeant's ranks.

The Club is small but it is lively; weak in number, but powerful in force. When sitting as a court, its decisions are final; when out for fun—you ought to be there; and when it starts out to do a thing, it is done right.

In short, the Sergeant's Club is a group of non-commissioned officers who feel almost as brothers to each other—a group any one should be proud to be a member of.

JACK GRAY, *Vice-President*
 BURTON MILES, *Secretary*
 BILLY WOOD, *President*

JOE B. HATTER
 C. W. UNDERWOOD
 T. E. ASHCRAFT

CARL SESSIONS
 D. F. WILSON
 GRANT JACKSON

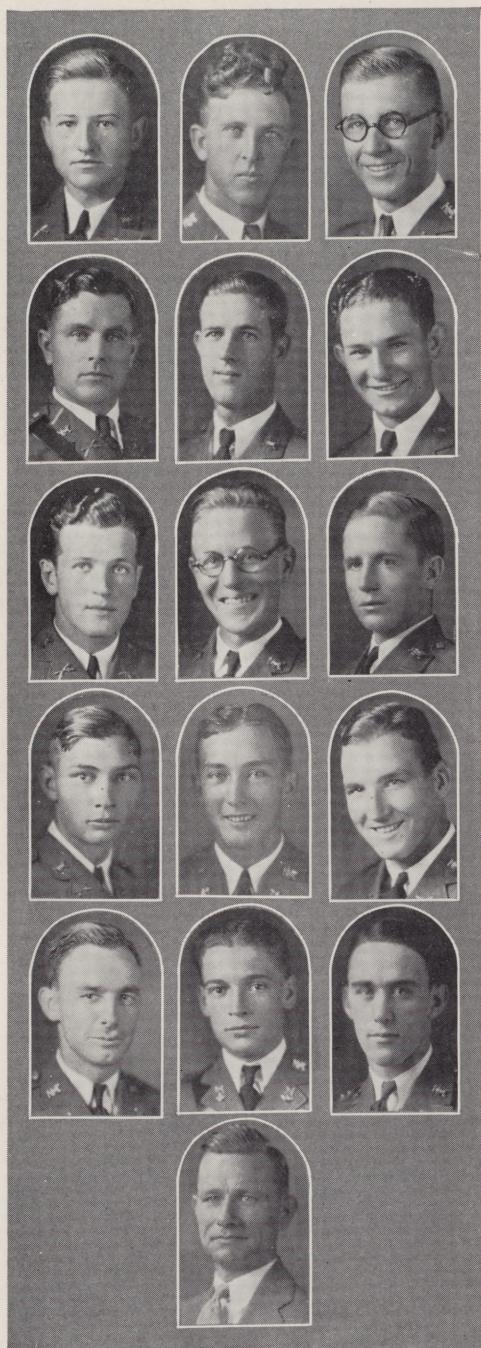
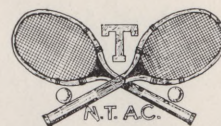
G. A. SMITH
 L. H. MCCOOL
 JAMES HERNDON

JEFF FOX





Tennis Club



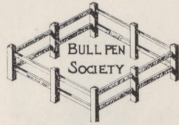
The Tennis Club, organized in 1928 chose the following officers to pilot it through the scholastic year 1929-30: Grant Jackson, President and captain of the Tennis Team; H. A. Hall, Vice-President; John Simons, Secretary-Treasurer; Charles Gregory, Shorthorn Reporter; and Spears Stephens, Club Reporter.

The club is a social as well as athletic organization and picnics and weiner roasts comprise an important though secondary phase of the club's activities. The definite objects of the club are to promote interest in tennis at the college and to aid the tennis team in winning the state championship each year.

J. B. Preston and Robert Jackson are sponsors of the club and coaches of the college tennis team.

- RAYMOND SLAUGHTER
- H. A. HALL, *Vice-President*
- GRANT JACKSON, *President*
- J. P. DAVIS
- J. S. STEPHENS
- J. T. SIMONS, *Secretary*
- FRANCIS HARVEY
- RAY HYNDY
- CHARLIE GREGORY
- HORACE HALL
- J. STILES
- BOWMAN SNIDER
- JACK WISE
- HOWARD TAYLOR
- WALTER PAYNE
- JOE B. PRESTON, *Sponsor*

Bull Pen Society



The Bull Pen Society is composed of all off-campus students. They meet in the basement of the new dining hall daily at noon. High class entertainment is furnished at that time. Each member is a performer on the program, and prizes are awarded to the students who show the best artistic ability. To the consternation of the upper-classmen, these prizes are usually won by the freshmen, who receive them with loud acclaim.

The society was organized to develop school spirit among off-campus students. This school spirit has clearly manifested itself all year. At every contest, whether it was football, basketball, track or debate, the Bull Pen was well represented.

L. T. NOWLAIN, *President*

CHARLES McMURRAY

COLLIER WARREN

LEROY HASKELL

ROY PENDER

RAYMOND SLAUGHTER

HERMAN BLACKBURN

ROBERT TERRELL

HORACE HALL

D. M. McMAINS

RAYMOND DARRAH

S. P. ROACH

WILLIS CANNON

LEWIS EMERY

GEORGE MALAISE

L. H. McCOOL, *Sec.*

J. W. JOHNSON

COSTON LEE GREGORY, *Vice-Pres.*

W. H. BLACK

DAVID JONES

S. S. SUMMERS

JOHN STUART

J. L. HUGHES

WM. WORTHAM

RAYMOND PARR

RONALD ILLINGWORTH

WARREN FULFORD

E. H. BRUMMETT

LAFAYETTE FRANKS

THOMAS HEATH

COLE HERNDON

ROBERT DIX



L. B. LESLIE

CHARLES STRAWN

CARL ADDISON

HAROLD SPEIGHT

Household Arts Club



The purpose of the Household Arts Club is to improve the living habits in the home and the community and to give the girls a better understanding of practical home economics work.

In 1927-28 the membership of the club was extended to all the girls in N. T. A. C. The club meets in the college auditorium every second Tuesday evening in each month at seven o'clock. At each meeting a short business session is held, followed by a program. After the program refreshments are served and a social hour is enjoyed.



EDNA MOORE
 MRS. NIX
 MRS. CHAMBERLAIN
 MISS POINDEXTER

MARY IONE VICKERY
 ELIZABETH JOINER, *Vice-President*
 ESTELLE TODD, *Secretary*
 SUE HULL, *President*

ANN HIETT
 ELIZABETH LATIMER
 EFFIE SMITH
 BERNICE HERRING

VIRGINIA WHEATLEY
 BENITA HAMILL
 OPAL PRATHER
 OPAL ROGERS

GRACE WILSON
 ALA RAE BELT
 DOROTHY LANGDON
 MARION LANGDON

MARGARET PARKER
 GERTRUDE DUDERSTADT
 BEVERLY COX
 ANGIE DAHNKE

CORNELIA FAYE STEWART
 ELIZABETH DICKEY
 MARY A. BRADFORD
 MARJORIE GROGAN

MARGUERITE NASH
 ELIZABETH NASH
 CELETA KEITH
 ORA MAE BLAIR

MILDRED WITHERSPOON
 JESSIE WADDELL
 MAURICE JOHNS
 JONNIE ZUEFELDT

DELMA BROWER
 AILEEN MCDANIEL
 KATHLEEN HOWLE
 MILDRED ANNE KEARBY

Engineers' Society



The Engineers' Society was organized in '28 for the purpose of bringing the engineering students of N. T. A. C. in closer contact with the engineering world. This is being done by obtaining speakers who are leaders in the engineering field. Other aims of the society are to develop the interests of the students in the engineering field, entertain its members and to bring students and instructors into a more intimate relationship.

All students who are classified as engineers are eligible for membership in the society.

JOHN STEWART
 CHARLES McMURRAY
 RONALDSON ILLINGSWORTH
 BOWMAN SNIDER

FRANCIS YOUNG
 THOMAS HEATH
 JASPER DUNN
 JOE TAYLOR, *Vice-Pres.*

ROBERT HAWKINS
 ELBERT GENTRY, *Secretary*
 GEORGE GROVES
 EDWIN HAMILTON

J. T. SIMMONS
 PERRY LEONARD
 JOE LEAVERTON
 LESLIE LENNEN

ORVILLE MAAG
 L. D. WILLIAMS
 JEFF FOX
 ROBERT DIX

NEIL WELLER, *President*
 MAURICE WILDER
 Q. S. HALL
 ELMER HUFFHINES

JACK GRAY
 LOUIS KACZMAREK
 W. C. LONG
 DOUGLAS FAITH



S. P. ROACH
 C. W. UNDERWOOD
 WILLIAM WORTHAM
 J. L. HUGHES

Commercial Club

All students taking any form of commercial work are eligible for membership in the Commercial Club. The club is one of the largest and most active organizations about the campus, as a majority of the students take at least one commercial subject.

The club holds its meetings the second Tuesday in each month, at which time practical business subjects are discussed by the students, and some talented speaker addresses the students.



RAYMOND PARKER
THEO. VANDAVEER
LEON POLK
WALTER PAYNE

HAZEL MAYS
KEISTER SNODGRASS
OPAL ROGERS
ARLIE HOOKS

J. R. KNOTT
IRENE WILLIS
ARTHUR STROUD
MARJORIE GREGAN

CHARLIE SHEFFIELD
ROBERTA TUCKER
DOROTHY MCCOY
HERBERT MOODY

RAY HYNDS
EDWARD MOSELEY
SCRANTON THOMAS
STELLA M. RUDD

D. M. McMAINS
ERNA JONES
ESTELLE TODD
HAMP PRITCHETT

ROY PENDER
WANETTA JOHNSON, *Secretary*
MRS. L. WILSON
ROBERT KYLE

GRANT JACKSON
GROVER GODFREY
HUGH SMITH
ELIZABETH BUSH

JOHN SIMONS
ANICE HAYES
VIRGINIA TURPIN
ROGER MCIVER

HANNAH ANN HOUSE
B. C. BARNES
W. L. WATSON
BONNIE LEA LANGDON

Commercial Club

Mr. W. L. Watson, head of the Commercial Department, and sponsor of the club, has been instrumental in working out many interesting programs in conjunction with Professors Zelda Ramsey and Mrs. Jennie Floyd.

Officers of the club are T. R. Dempsey, President; Robert Caperton, Vice-President; Mary Elizabeth Gray, Secretary; D. M. McMains, Reporter.

EVA BIGGERS

NEEL KEARBY

JEWELL CARPENTER

WILLIS LANIER

FRANK JARED

CHARLES HARRIS

HOWARD BARRETT

JOHN WISEMAN

ROBERT CAPERTON, *Vice-President*

JOHN JOHNSON

REFORD HOUSTON

ANNIE B. HARTIN

J. B. HENEGAR

JONNIE ZUEFELDT

RAYMOND FARMER

DAVID JONES

DOYLE EVANS

MARY L. MAGERS

JOHN CEARLEY

RUSSELLE MITCHELL

FLOYD CARLOCK

LUCILLE AARON

JOHN ERWIN

MARY ELLEN ADAMS

NOBLE BOYDSTON

J. M. MONCRIEF

M. C. CHRISTOPHER

TED • TISDALE

JOHN HARPER

CAREY HURLEY

HAROLD SPEIGHT

T. R. DEMPSEY, *Pres.*

ROY JONES

HERMAN HAGEDORN

EDNA PEARL NASH

WEBB JOINER



J. T. SIMMONS

MARY ELIZABETH GRAY

WILLIAM LOONEY

T. E. ASHCRAFT

Co-Op Club

Part-time Co-operative Courses, which have for their objective training various students—Agriculture, Commercial Arts, Practical Electricity and Auto Mechanics—to make useful citizens, had their inception into this college in September, 1927. This is now one of the most popular departments in the college.



MARVIN CHEEK
MICHAEL MASERANG
MARY E. GRAY
JEWEL CARPENTER
HAMDEN SMITH

MARY LUCRETA MAGERS
JOHN COFFEE
BOONE GOODE
CALVIN QUINN
HENRY SPAULDING

JOHNSON HARPER
HOMER MOUSER
FRANKLIN GATES
MR. FAGAN
HAROLD CAWTON

ROGER McIVER
EMMETT MOORE
OLA ORGAN
CLARENCE DUROSS
MURRAY DUDERSTADT

R. A. JONES
WINIFRED RINEY
ORGALD LIPPS
C. H. MILLER
CARROLL CRUCE

CLYDE GRACEY
BARNEY McQUERRY
ROBERT KYLE
AUBREY SWANK
RAY LOWANCE

CHARLES SHEFFIELD
CECIL RAY
JOY STOKER
ARLIE HOOKS
CECIL LOWE

LEROY MOORE
MILTON PHILLIPPS
HERBERT CROMER
W. H. EVERETT
GUY FELLMY

R. W. EDDLEMAN
BYNO JETER
RAYMOND FARMER
HERSCHEL MOODY
HERBERT MOODY

WESLEY SMITH, *Vice-President*
RAY MARVIN
WANNETA JOHNSON, *Sec.-Treas.*
W. M. JOINER

Co-Op Club

Students making up the personnel of these courses work in pairs for six weeks periods. One boy is in resident study, while his partner is on the job, alternating between class and jobs on the field for a period of two years.

ARTHUR STROUD
 SCRANTON THOMAS
 ANNA B. HARTIN
 FRAZIER EDMONDS
 WAYNE JETER

JOE B. STANLEY
 JAMES FINCH
 MARION WILLIAMSON
 JOHN ELMORE
 RICHARD BARBER

LEWIS FRY
 TWAIN CROMARTIE
 CARSON DRAKE
 OTHA HOPSON
 GERALD BURNETT

L. E. FOSTER
 HUGH SMITH
 CHARLES VANDERPOOL
 TRAVIS SMITH
 H. W. ALLDAY

THURMOND WATKINS
 IRENE WILLIS
 JOHN HARPER
 HOMER HARRIS
 C. J. ROLLINS

RAYMOND KELL
 HONLON BURNETT
 HOWARD BARRETT
 VIRGIL BURKE
 ROBERT ROYAL

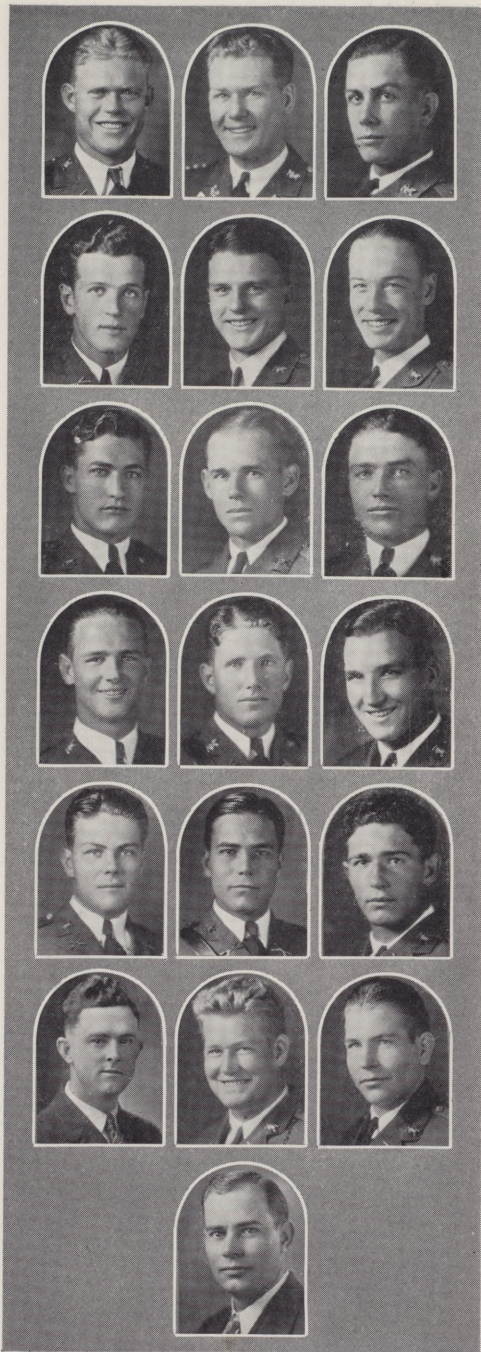
FLOYD CARLOCK
 ORVAL BARKER
 FRANKLIN GATES
 CARL GARNER
 FREDERICK STOCKTON

L. G. STRICKLAND
 ODELL KUKYENDALL
 DAVE GUTHRIE
 T. R. DEMPSEY, *President*
 HANSEL SIMPSON

WM. STALCUP
 JAMES KNUDSON
 CECIL SHAFFER
 LOUIS SIMPSON
 PAUL TINER



HAMP PRITCHETT
 T. L. REESE
 ROBERT BRUBAKER



“T” Association

The “T” Association is an athletic organization composed of men who have lettered in one of the five major sports sponsored by the college athletic department. This year the club has a membership of seventeen.

The club was organized last year to uphold the traditions of the school in the field of athletics and to create a greater enthusiasm among the boys. Arrangements have been made for a collection of pictures of all men who have been lettered at N. T. A. C. since 1917. When the new gymnasium is built, these pictures will go on the walls to form an athletic “hall of fame.”

NEAL WELLER, *President*

LEROY BIGLEY, *Secretary*

JOE TAYLOR, *Vice-President*

FRANCIS HARVEY

DOUGLAS FAITH

LEVIS WIGGINS

J. R. KNOTT

ELBERT GENTRY

JOHN CEARLEY

JACK GRAY

L. T. NOWLAIN

BOWMAN SNIDER

R. W. PARKER

ORVILLE MAAG

GEORGE GROVES

COACH MOORE

JAMES HERNDON

THURMOND GRAVELY

H. A. DUNSWORTH

Athenian Club

The Athenian Club is an organization on the local campus which sponsors the literary activities of the college group. Its meetings are the training sessions for the amateur theatrical performers and the embryonic public speakers who represent the student body in a forensic expression of these activities.

This year, under the direction of Professor W. A. Ransom, the Athenian Club sponsored a one-act play called "Peggy." Burton Miles, Anna Lou Bennett, Thelma Jo Ford, Francis Geeslin, J. W. Taylor, Joe Burt Leaverton and Robert Peterson participated in this play. It was presented free of charge at a regular meeting of the club, and at one of the college assembly hours.

In addition, the Athenian Club has sponsored an inter-collegiate debating program, bringing to the local campus such inter-collegiate competitors as the Jefferson School of Law, North Texas State Teachers' College C. I. A., and Paris Junior College.

ELIZABETH LATIMER, *Vice-President*
 BURTON MILES
 GROVER GODFREY
 JOE TAYLOR, *President*
 ANNA LOU BENNETT

OBIE COTTER
 FRANCES GEESLIN
 CELETA KEITH
 WALTER PAYNE
 KATHLEEN HOWLE

CARL SESSIONS
 T. A. WOOD
 DOROTHY MCCOY
 PAUL TINER
 ROBERT PETERSON

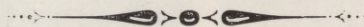
ROGER MCIVER
 NORMA KOTT
 LORENE KOTT
 RAY HYNDS
 NATILIE DAVIS

ADENA NORMAN
 PAT HENDERSON
 VIRGINIA WHEATLEY
 JESS BELLAMY
 JASPER DUNN

THELMA JO FORD
 LOUIS KACZMAREK
 JACK CELY
 VERONA BASSETT
 LOWELL WHEELER



DELMA BROWER
 GLENN CARRUTH
 M. S. RUDD
 E. H. BRUMMETT
 EDITH RODDY
 DUNCAN ROBINSON, *Sponsor*





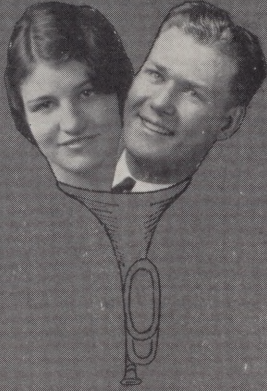
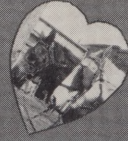
THALEIA, MUSE OF COMEDY

From a Marble in the Vatican, Rome
Copy of a Greek work, II Century, B. C.

FUN AND ADS



S OF OUR TIMES.



"WITHOUT HER I AM A
SHE CANAL THAT HAS LOST,
AND HOWLS IN THE SAND
AT NIGHT."



"UPON THE SKIFF THAT
FLIES AND SEEMS
TO FLOAT UPON A TIDE
OF DREAMS."



"TWO WE WERE,
AND THE HEART WAS ONE."



"SHE WILL ALWAYS WAIT BY THE
SAME OLD GATE,
THE GATE HER TRUE LOVE
GAVE HER."



"OLD FASHIONED
LOVERS"

AND
HIGH POWERED
LOVE!"

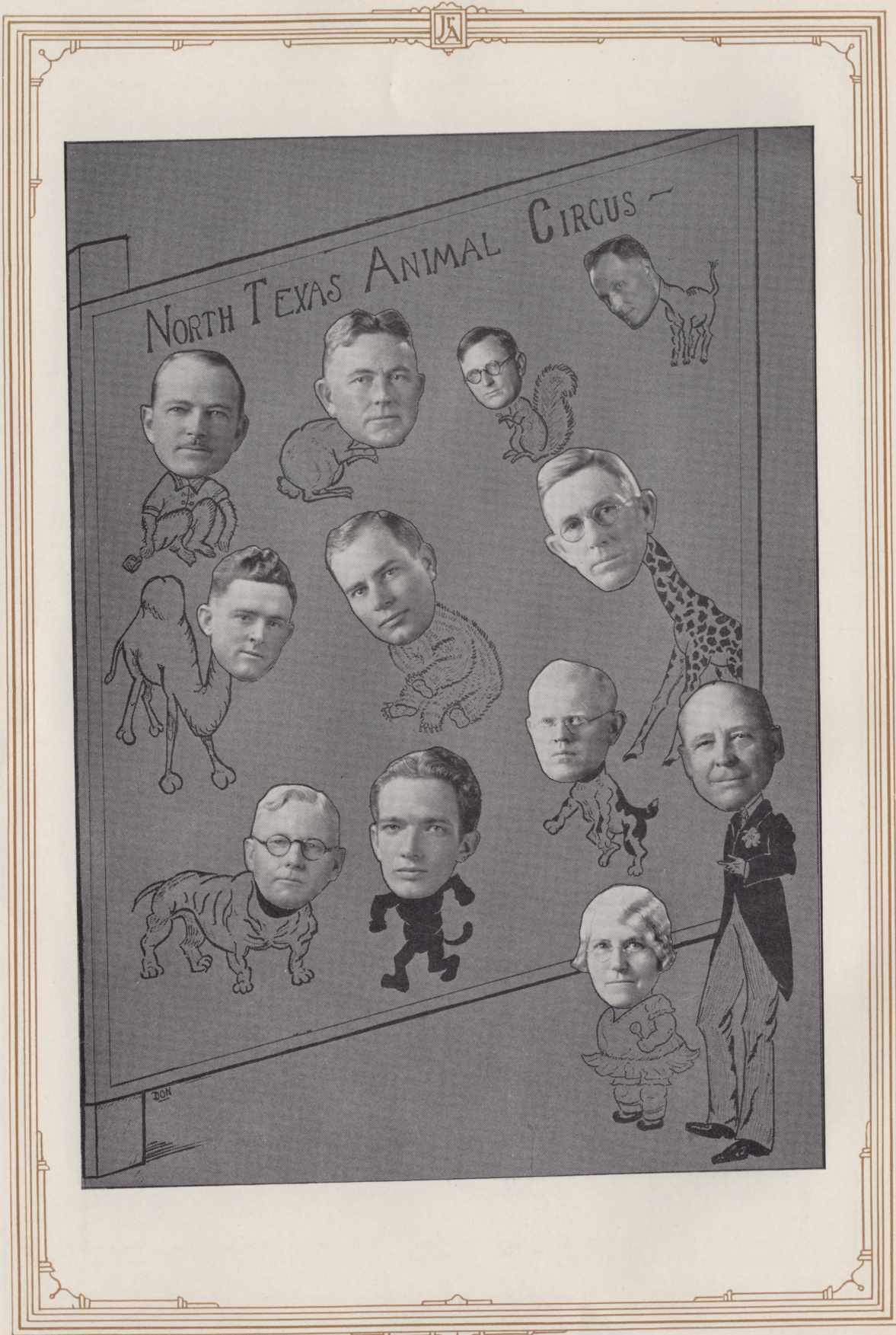


JOHN



BABY DAZE





WHEREVER YOU ARE
WHATEVER YOU WANT

IN

Military Apparel, Insignia and
Equipment

WE CAN SUPPLY YOU



FRANK BROS.


*THE Military Outfitters
of the South*

ALAMO PLAZA

SAN ANTONIO, TEXAS

COLLEGE AND SCHOOL
ANNUAL PHOTOGRAPHY
IS OUR SPECIALTY




Taylor's Studios
PHOTOGRAPHS
-that Live Forever
Fort Worth, Texas

Junior Aggie Photographer 1930



NOTE TO EDITORS:

*Write us and we will send a representative
to explain our plan.*



North Texas Aggies

Ride the Deluxe Interurbans on Your Trips to
Dallas and Fort Worth



Cars to Dallas leave Arlington every hour at 38 minutes after the hour from 6 A. M. to 12. P. M.

Cars to Fort Worth leave every hour at 53 minutes after the hour from 6. A. M. to 12 P. M.



North Texas Traction Co.

*Most "mileage" per dollar
is obtained from*

HERMANS SUPER SERVICE SHOES

Exhaustive War Department tests evolved the famous Munson last with attendant specification for high grade leathers and skilled workmanship—combined in Herman's Super-Service Shoes.

Over 4,000,000 pairs of Herman Shoes, many built on the Munson last, have been bought by the U. S. Army, Navy and Marine Corps and given splendid service under every condition in practically every country.

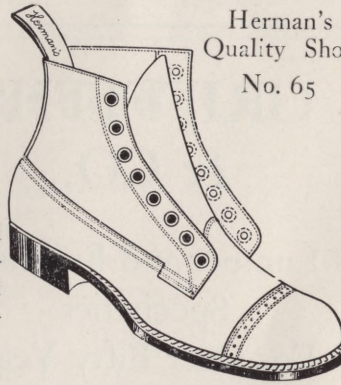
Naturally, Herman's Shoes are famous for comfort, ease and foot protection as well as their long, satisfactory service at low cost "per mile."

JOSEPH M. HERMAN SHOE COMPANY

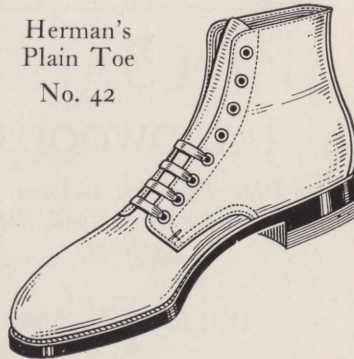
BOSTON

MASSACHUSETTS

Herman's
Quality Shoe
No. 65



Herman's
Plain Toe
No. 42



MONNIG'S

Houston at 5th Ft. Worth, Texas

Students
of
North Texas
Agricultural College



Are cordially invited to make our
store your store while in the city.

MONNIG'S

"The Friendly Store"

Where a Real Welcome Awaits You

GRIFFITHS & CO.

Lumber and Building
Specialties
For Over Fifty Years



HARDWOODS

*Creo-Dipt Shingles, Celotex Upson
Wallboards, Sheet Rock, Asphalt
Roofings*

DALLAS, TEXAS

Dairyland Products



IN SEASON AT ALL TIMES



SHAW Dairyland

FT. WORTH, TEXAS

Progressive Printing Co.

CARDS
CATALOGUES
AND
THINGS



1207 Throckmorton Street
Dial 3-2574

FT. WORTH -- TEXAS

**FIRST STATE
BANK**

ARLINGTON TEXAS



THE COMMUNITY
Bank of SERVICE

PREFERABLY

King's

Chocolates

For American Queens



*Sold by Leading Dealers in Each
Locality.*

KING CANDY CO.
FT. WORTH -- TEXAS

SLAUGHTER MOTOR CO.

Authorized  Dealers

CARS -- TRUCKS

248 -- TELEPHONE -- 249
L. D. 9502

Arlington — Grapevine — Grand Prairie — Handley

THE FIRST NATIONAL BANK

of

ARLINGTON, TEXAS

CAPITAL \$50,000.00

United States Depository for Postal Savings Funds

"We Invite Your Account"

COULTER & SONS

Dependable Druggists
ARLINGTON, TEXAS



*We are glad to serve the students of
N. T. A. C. and our services are at
their command.*

L. A. Barnes Company



Everything for the Office



1009 Houston St. Ft. Worth, Tex.

Burdett Oxygen Company

OF TEXAS

*Unit of Compressed
Industrial Gases, Inc.*

OXYGEN - ACETYLENE
CARBIDE
WELDING APPARATUS
and SUPPLIES

321 West 13th St. Ft. Worth, Tex.

Insurance and Bonds

ALL KINDS
FIRE - LIFE - TORNADO
AUTOMOBILE, Etc.

"If it's INSURANCE we write it."

Davis & Bondurant

AGENTS

Office: First State Bank Bldg.

Phone 52 ARLINGTON, TEXAS

A NOTE ABOUT "CIVIES" ADDRESSED TO MILITARY MEN

All Society Brand Clothes have the
Snug-Ease Shoulder, assuring a smooth,
snug effect at shoulders and neck.
Exclusive with Society Brand. In
Kahn's comprehensive showing of
Society Brand Clothes there's every
variation of the new and the good.

E. M. KAHN & CO.

Since 1873

MAIN AND ELM AT LAMAR DALLAS

IN NORTH TEXAS FOR MILITARY EQUIPMENT

IT'S

CARROL'S

208 N. Akard Dallas, Texas

H. H. Hardin Lumber Co.

"Everything in Building Material"

Phone 30

ARLINGTON TEXAS

Congratulations

from

Sanger Bros.



FT. WORTH -:- TEXAS



HALTOMS

The House of Diamonds

JEWELERS

and

SILVERSMITHS

Main at 6th

Fort Worth

WEST TEXAS

PRODUCE CO., Inc.

239 W. 15th Street

FT. WORTH

-:-

TEXAS

Pittsburgh Plate Glass Company

GLASS, MIRRORS, PAINTS

321-323 South Main Street

FT. WORTH

-:-

TEXAS

The Arlington Journal

PERRY BROTHERS, *Publishers*

See Us for

The Best Job Printing

PHONE No. 7

Save with Safety at Your

REXALL DRUG STORE

Webb Brothers

Arlington

-:-

Texas

Carter & Company

*Hornets' Nest for
Seven Years*

Norman Dry Goods Co.



"More for Less"

Cannon Brothers Paint Co.

Paints from Factory Direct to You

WALL PAPER

PAINTERS' SUPPLIES

Arlington

Texas

KNAPP'S

Barber and Beauty Shop

Everything for N. T. A. C.

C. L. KNAPP

ANNA DAVIS

Rose Brothers

REAL ESTATE
AND LOANS

Arlington

Texas

WILLIAMSON'S GARAGE

"Everything for the Auto"

Arlington

Texas

Barber Shop

Opposite Lindbergh Hall

COME TO SEE US

W. A. McDONALD

Junior Aggie
Sandwich Shop

*Just Across the Street from
Lindbergh Hall*

EVERYTHING TO EAT

Arlington Lumber Co.

GOOD BUILDING
MATERIAL

LOYD BARTON, *Manager*

PHONE 46

COLLEGE
CLEANERS

*"Quality Cleaning
and Pressing"*

WELDON BROWER, *Manager*

Arlington

Texas

Let Us Service Your



Binney-Dicklow, Inc.

Arlington

Texas

*Two Best Places to Eat
Home and the*

GOLDEN PHEASANT
RESTAURANT

1507 Commerce St. Dallas, Texas

Southern Ornamental
Iron Works

Architectural Iron Works
Elevator Doors
Offices, Dallas and Ft. Worth

Arlington

Texas

BRUNDAGE
PRINTERS

PUBLISHERS
WE PRINT THE
SHORTHORN

Grand Prairie

Texas

J. S. ADKINS
JEWELER



WATCH AND JEWELRY
REPAIRING

Ford Candy Co.

DALLAS

--

TEXAS

With Compliments
From a Friend

With Compliments from a Friend

Schenecker
Produce Co.

Wholesale Fruits and Vegetables

FT. WORTH, TEXAS

R. W. McKNIGHT

GROCERIES and MEAT
COUNTRY PRODUCE

Fruits and Vegetables
24 -:- PHONES -:- 25

Wright Brothers
Garage

"WE MAY DOZE BUT WE
NEVER CLOSE"

Phone 300

In Fort Worth or Dallas

*When You Are Looking for Good
Clothes for Less Follow the Crowd to*

Victory Wilson, Inc.

JAMES K. WILSON, *President*

W. C. STRIPLING CO.

Ft. Worth's Largest
Department Store

SERVICE — CORDIALITY
THRIFT

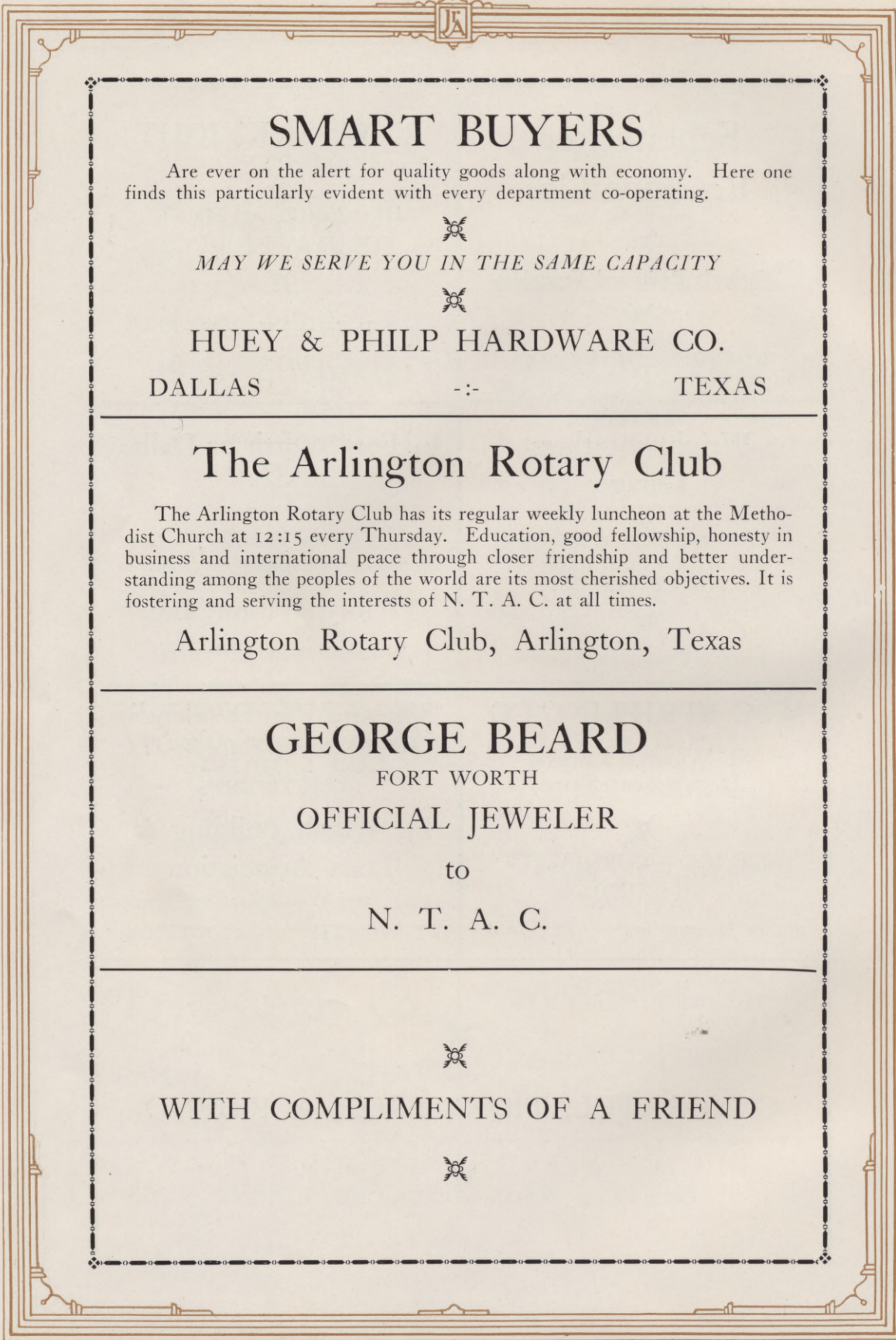
301-15 Houston St. Ft. Worth

8% and 7% Dividends
ON MONTHLY SAVINGS
AND LUMP SUM
INVESTMENTS

Ft. Worth Building &
Loan Association

209 West 8th Street
FT. WORTH -:- TEXAS

CONGRATULATIONS FROM A FRIEND



SMART BUYERS

Are ever on the alert for quality goods along with economy. Here one finds this particularly evident with every department co-operating.



MAY WE SERVE YOU IN THE SAME CAPACITY



HUEY & PHILP HARDWARE CO.

DALLAS

-:-

TEXAS

The Arlington Rotary Club

The Arlington Rotary Club has its regular weekly luncheon at the Methodist Church at 12:15 every Thursday. Education, good fellowship, honesty in business and international peace through closer friendship and better understanding among the peoples of the world are its most cherished objectives. It is fostering and serving the interests of N. T. A. C. at all times.

Arlington Rotary Club, Arlington, Texas

GEORGE BEARD

FORT WORTH

OFFICIAL JEWELER

to

N. T. A. C.



WITH COMPLIMENTS OF A FRIEND



Is Mary There?

OF COURSE she is! All week she has been looking forward to this "Long Distance date."

Girls appreciate such thoughtfulness. "Your Mary," too, will thrill at the sound of the telephone bell . . . will eagerly wait for your call. Station-to-station service makes it reasonable.* Just give the Long Distance operator the telephone number, or the name and address under which it is listed—but don't specify a particular person. If you give the number . . . it's quicker!



**You can talk a hundred miles for only 60 cents.*

SOUTHWESTERN BELL TELEPHONE COMPANY



Strong . . . Friendly . . . Helpful Accommodating

A sincere interest in the financial progress of each depositor and a friendly desire to give every possible service are responsible for the consistent growth of this institution.
Commercial---Savings---Trust---Investments

OFFICERS

K. M. VAN ZANDT <i>President</i>	B. H. MARTIN <i>Vice-President</i>	ELMER RENERO <i>Cashier</i>	W. E. WELCH <i>Asst. Cashier</i>
R. E. HARDING <i>Vice-President</i>	R. C. HEARNE <i>Vice-President</i>	K. V. JENNINGS <i>Asst. Vice-President</i>	C. W. BRASELTON <i>Asst. Cashier</i>
E. E. BEWLEY <i>Vice-President</i>	R. W. FENDER <i>Vice-President</i>	E. P. VAN ZANDT <i>Asst. Vice-President</i>	W. B. CAYCE <i>Asst. Cashier</i>
W. M. MASSE <i>Vice-President</i>	GUY PRICE <i>Vice-President</i>	D. G. WEILER <i>Asst. Cashier</i>	S. O. HARTMAN <i>Asst. Cashier</i>
			J. A. OLSON <i>Asst. Cashier</i>

The Fort Worth National Bank

Established 1873

Main at Seventh

Fort Worth, Texas

UNITED STATES DEPOSITARY



D IMPORTED PHALAROS D
 D By Phalaris; Dam, Picardet D
 D —HEAD STUD— D

VISITORS ALWAYS WELCOME
 AT
THREE D's STOCK FARM
 ARLINGTON, TEXAS



ARLINGTON'S FAMOUS CARLSBAD
 MINERAL WATER



Arlington, The Coming Health Resort of the Southwest



MAKE ARLINGTON YOUR HOME

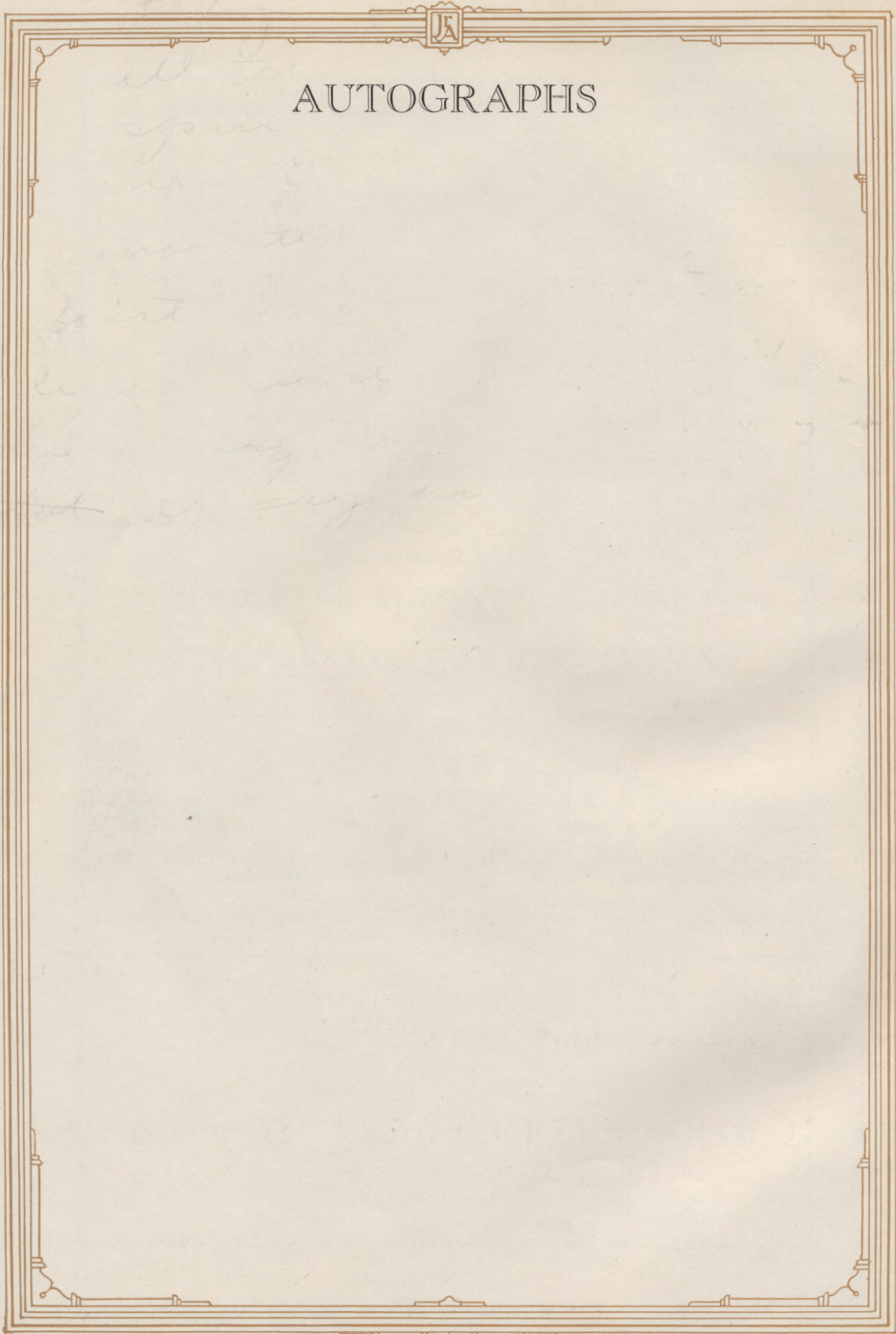
AUTOGRAPHS

Dear Elizabeth

All of us shall remember these
days at N. F. C. and I shall always
remember your winning way of talking

Love
Edwin Hollingsworth

Reserved



AUTOGRAPHS

[Faint, illegible handwriting visible through the paper]

When you set up a storage garage, won't we be fun. May you have much ease in swimming, swimming, swimming. Lots of love
Mrs. W. H. H.

MODERN AS YOUTH ITSELF!



● Within the space of a score of years, the scope of Southwestern Engraving Company has increased from the parent plant in Fort Worth to an organization of nine plants.

● Pioneering the field in the introduction of modernistic art, a personal service bureau composed of former college annual editors and managers, the budget and dummy system, and field service men, the name "Southwestern" has become synonymous with art motifs that **are** distinctive, an understanding, helpful service, and printing plates that "print right."

THE SOUTHWESTERN ENGRAVING COMPANY

FORT WORTH TULSA ATLANTA DALLAS HOUSTON SAN ANTONIO BEAUMONT AMARILLO WICHITA FALLS



Many new staffs turn each year to SWECO'S corps of artists, personalized service, and engraving technicians for fresh ideas, newer layouts, and modern methods in year book production.

How about a
HIDE
KID. Pease

(Pease 'top Peacock,
'tent up.)

Dearest Liz:

Well third spring, no, it is
first spring isn't it. well any
how the dance was alright.
you know the only thing I don't
understand about you is the
eclipse and the mud. I
have always wondered about
that. I say. kind those sand-
wiches were sure good the
other day I hope you can
cook as good as you make
sandwiches then I won't
be worried. ("Let's 'do out on 'de FAIRWAY"
PEASE!!)

Liz to put all the foolishness
aside, I sure have enjoyed
this year (half term) with
you and Jack and I think you
are the best sport among the
opposite sex I have ever met,
I just hope you come back
next year and we will have
a better time, but during the
summer don't forget your friend
and admirer, Peacock.

P.S. Expect me any time at Mrs Timney's I want to
taste some good fried chicken & steam wavy

Who is this opposite page reserved for
I'll bet it's either your...

Dear Lizabeth; Don't think I'll ever forget you cause I want. Well if I have to write here I will. You see you might not appreciate of what I am going to say and you might leave it out. If so, O.K. Because you will remember me anyway on account of there not being another one anywhere exactly like I am. Not that I'm conceited, but you know of some of the things that have happened (wristle) and I haven't happened to me, before and after you've known me. You know kid you'll have to admit that I could write a book that would be kinda different from any you've read. And then too our good times were different from most peoples don't you think? I don't know what to write to you sweet kid cause, well when I think about this being the last night we'll be together and when I think of all of those kids that left this morning, and when I think of Peacock and you and, Heck I don't know. There's so many, many, many things to think of that has happened and I know are ending, that, I don't know I kinda want to cry just a little bit. Well if I don't before I finish writing here, I'll be surprised. You a damned sweet little baby at times, and at others, a heny stuck up little woman. Either way your O.K. and don't forget it. Hear me? Your mother is some sweet Liz and I like her an awful lot. I only hope that my kiddish ways at times did not make her think bad of me, cause, well you know, you know every thing, I don't have to tell you over and over and over, do I? You're a sassy little devil that is disguised perfectly as an angel. but its really all O.K. and I never have meant all of the mean and sarcastic remarks that I've said to you. Not that you don't deserve them but that I don't mean them. Wait ever Oh yes, all of that blamed mud that we got into. Well you. No feeling now Liz, she enjoyed knowing you, and being with you and having you for a - well, Buddie & Pal, a swimming teacher, a fussy little imp, and a real sweetheart at all times, even if you don't believe it. But you do and I know you do, so, what's the use in not telling you? And really, you're not 1/2 as mean as people think you are. However let me think it. I appreciate it in any one, and especially when you conduct yourself in public as you do. It makes every one like you and respect you, you really have to be congratulated. Should I congratulate you or your mother? Probably both, because a mother can show you how to be and how to act, but it depends upon you to carry it out. Even if I am second choice as a date to night, and even if I do know the only reason I have one, I am happy. You know if you had've ever heard a certain conversation the other night I would've had a date, now how would you like to be second choice and know that you were, and know too that - well nothing, I won't make you feel bad about it, even if I could. No this isn't a lecture but its some thing that I wanted to tell you, and I could write and write for ever so long and still leave out some thing I wanted to say. Tell you most every thing tonight.

I wonder if you'll remember me even a little bit. Huh?
Love Liz, Really, Jack. You a sweet little mess.
and a prince of a sport.

Dear Elizabeth:

I.H.

Well, how could I forget those days that I have sat next to you in Biology. I will never forget. Remember the football Banquet?

Elizabeth, I hope you will always look upon me as one of your best friends. I wish you much success and happiness in the future.

a friend,
John Simons
11

Dear Elizabeth:

In the school year just past I have come to know and admire you. I am really glad you overlooked the social error I made last summer and started speaking to me. On the level I think a lot of you and always remember me a

A friend
Bowman Linder

Dearest Elizabeth:

I think you are real sweet and in years to come remember me as one who thinks just lots of you.
Barney

Dear Elizabeth -
Very little I have known you, but even then I have learned to appreciate you very much. Just remember me as one of N.T.A.C.
Bivron Mills

Dear Elizabeth:
When you think of our struggles in English - May you think of me - and when you find what so many look for - Happiness in our English - May your life be different in Ilford
"Member"
"Member"

